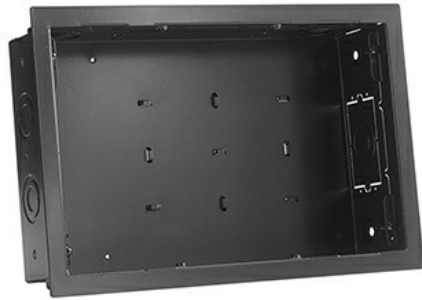




Wiremold  
**WMPAC525 In-Wall Storage Box with Flange**  
Part No. WMPAC525F



The WMPAC525F and WMPAC526F simplify flat panel installation by providing an organized, recessed space for routing excess cables and for attaching surge protectors/power conditioners. The addition of the flange adds an aesthetic trimmed appearance and drywall mounting capability.

Compatible with the PST, PRO, PLP, MSR, MTR, MWH, MWR, PWR, PNR, PDR, Thinstall, and FUSION wall mounts.

## Features & Benefits

Multiple depth break away edge: Allows compatibility with standard 3.5" studs & 2.5" studs

Pre and post construction installation options: Drywall and stud mountable

Enclosure UL 2416 Listed for installation of AV, IT & Communication Technology Equipment: Stores a large variety of AV components

Paintable flange and cover options to blend in any environment: Black and white color options available

Knockouts for single gang outlets and 1-1/4", 1", & 1/2" conduit

Integrated universal zip tie anchor points

Landscape/Portrait installation

## Specifications

### General Info

Product Line	Wiremold	Color	Black
UPC Number	786564105800	Country Of Origin	China
Installation Location	In-Wall	Application Sector	Commercial
Standard	UL2416		

### Dimensions

Product Depth US	3.9 in	Product Height US	14.25 in
Product Length US	9.0 in		

### Listing Agencies / 3rd Party Agencies

---

cULus Listed

Yes

---