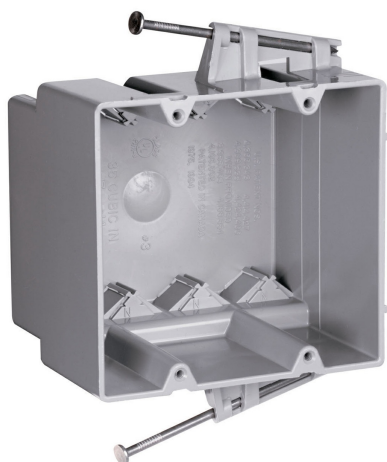




Pass and Seymour  
Switch and Outlet Box  
Part No. P235RACMH



Double Gang, Switch and Outlet Box with captive Mounting Nails on Each End, Four Auto/Clamps on Each End, 3-inch depth for manufacture housing walls. 100 pack.

## Features & Benefits

Durable, impact-resistant thermoplastic box.

Easy installation, rectangular cutout.

Innovative extras that cut installation time.

## Specifications

### General Info

Product Line	Pass & Seymour	Color	Gray
Country Of Origin	United States	Standard	Residential/Commercial

### Dimensions

Cubic Capacity	35 cu in
----------------	----------

### Additional Information

Product Environmental Profile	Yes
-------------------------------	-----

### Technical Information

Number of Outlets	2
-------------------	---