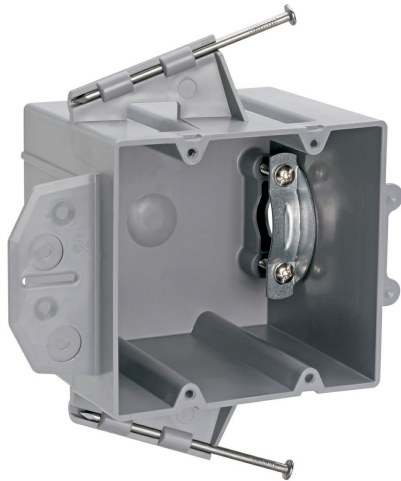




**Pass and Seymour
Range and Dryer Box**
Part No. P242RRD



Range and Dryer Box with captive Mounting Nails on Each End. 1/2-inch offset for wood or steel stud mounting with metal cable clamp. 12 pack.

Features & Benefits

Auto/Clamps on each end eliminate the need for separate cable clamps.

Easy installation, rectangular cutout.

Location ribs enable the installer to quickly and accurately maintain a 1/2 inch offset.

Constructed of impact-resistant thermoplastic.

Specifications

General Info

Product Line	Pass & Seymour	Color	Gray
Country Of Origin	United States	Application Sector	Residential/Commercial
Standard	UL listed		

Dimensions

Product Width US	4.0 in	Product Depth US	4.0 in
Product Length US	3.75 in	Cubic Capacity	42 cu in

Additional Information

RoHS Conformant	Yes
-----------------	-----

Technical Information

Number of Outlets	2
-------------------	---