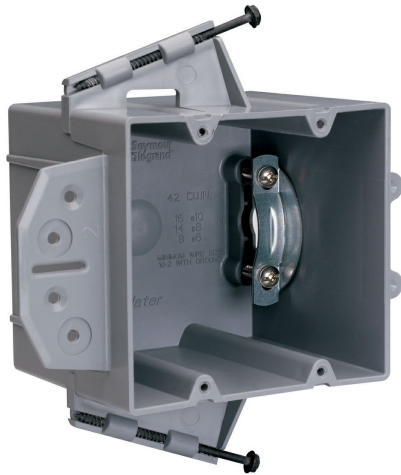




Pass and Seymour Range and Dryer Box

Part No. P242SRD



Range or Dryer Box with captive Mounting Screws on Each End. 1/2-inch offset for wood or steel stud mounting with metal cable clamp. 12 pack.

Features & Benefits

Auto/Clamps on each end eliminate the need for separate cable clamps.

Easy installation, rectangular cutout.

Location ribs enable the installer to quickly and accurately maintain a 1/2 inch offset.

Constructed of impact-resistant thermoplastic.

Specifications

General Info

| | | | |
|-------------------|----------------|----------|------------------------|
| Product Line | Pass & Seymour | Color | Gray |
| Country Of Origin | United States | Standard | Residential/Commercial |

Dimensions

| | | | |
|-------------------|---------|------------------|----------|
| Product Width US | 4.0 in | Product Depth US | 4.0 in |
| Product Length US | 3.75 in | Cubic Capacity | 42 cu in |