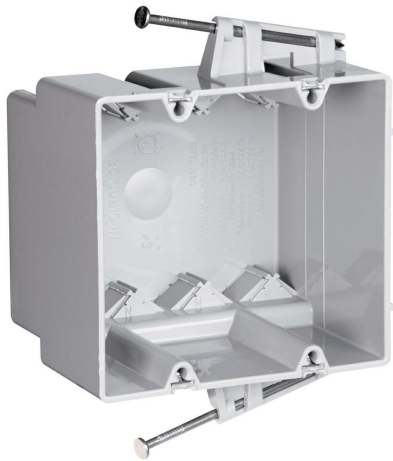




**Pass and Seymour  
Switch and Outlet Box**  
Part No. S235RACMH



Double Gang Switch and Outlet Box, captive Mounting Nails on Each End. Four Auto-Clamps on each end with Quick/Click Entries, 3-inch depth for manufacture housing walls. 100 pack.

## Features & Benefits

Quick/Click feature secures devices quickly and easily.

4 Auto/Clamps on each end eliminate the need for separate cable clamps.

Durable, impact-resistant thermoplastic box.

Does not strip when over-torqued.

Easy installation, rectangular cutout.

Innovative extras that cut installation time.

## Specifications

### General Info

Product Line	Pass & Seymour	Color	Gray
Country Of Origin	United States	Standard	Residential/Commercial

### Dimensions

Cubic Capacity	35 cu in
----------------	----------

### Additional Information

Product Environmental Profile	Yes
-------------------------------	-----

### Technical Information

Number of Outlets	2
-------------------	---