

**ORTRONICS®**125 EUGENE O'NEILL DRIVE
NEW LONDON, CT 06320
TEL: 860-445-3800
FAX: 860-405-2990

TITLE

**MIGHTY MO 6
CABLE MANAGEMENT RACK****MIGHTY MO 6 CABLE MANAGEMENT SYSTEM
ASSEMBLY INSTRUCTIONS**

NOTE: Instruction for both 19" and 23" panels. Rack for 19" panel is shown; rack for 23" panel uses the inside mounting holes as shown on sheet 3.

STEPS:

1. Before assembling MIGHTY MO rack, please inventory material contents per sheet 2 and schematic inside hardware kit cover.
2. The MIGHTY MO uprights have EIA rack unit numerals every 5 units and can be assembled with rack unit #1 at the bottom or at the top. Insure both uprights start the same. Attach the two upright side rails to the base angles using 3/8 x 1" hex head bolts, lock washers, and speed nuts. (MAX ASSY TORQUE: 12.5 FT-LB)
3. Attach top front waterfall and rear ladder rail to top of upright rails using 3/8 x 1" hex head bolts, lock washers and speed nuts. (MAX ASSY TORQUE: 12.5 FT-LB.)
4. Install bend limiters in slots on front waterfall and rear ladder rail. Hole in bracket installs on rear rail. Secure bracket using two #10 X 1/2" hex washer-head screws. The screws should be installed from outside of rear rail.
5. Install separator plate on inside of top waterfall using two #10 X 1/2" hex washer-head screws. The screws should be installed from the outside of the waterfall.
6. Install Hook-Loop wire management straps in vertical slots on inside uprights as required.
7. See sheet 4 for multiple rack configuration(s) and layout of floor mounting.
8. To secure rack(s) to floor, use 7/8 diameter holes provided in base of rack. The installation vendor should provide mounting hardware to secure rack to floor following local and state codes.

Part of the Ortronics
Layer Zero™ Solution

716014051

INSTRUCTION SHEET #	REV.	ECN #	SHEET	DWN.BY:	DATE	CHK.BY:	DATE	APP.BY:	DATE
OR-71601405	03	04009	1 of 4	LEVESQUE	11/10/09	CAC	11/30/09	W. DIETZ	12/01/09



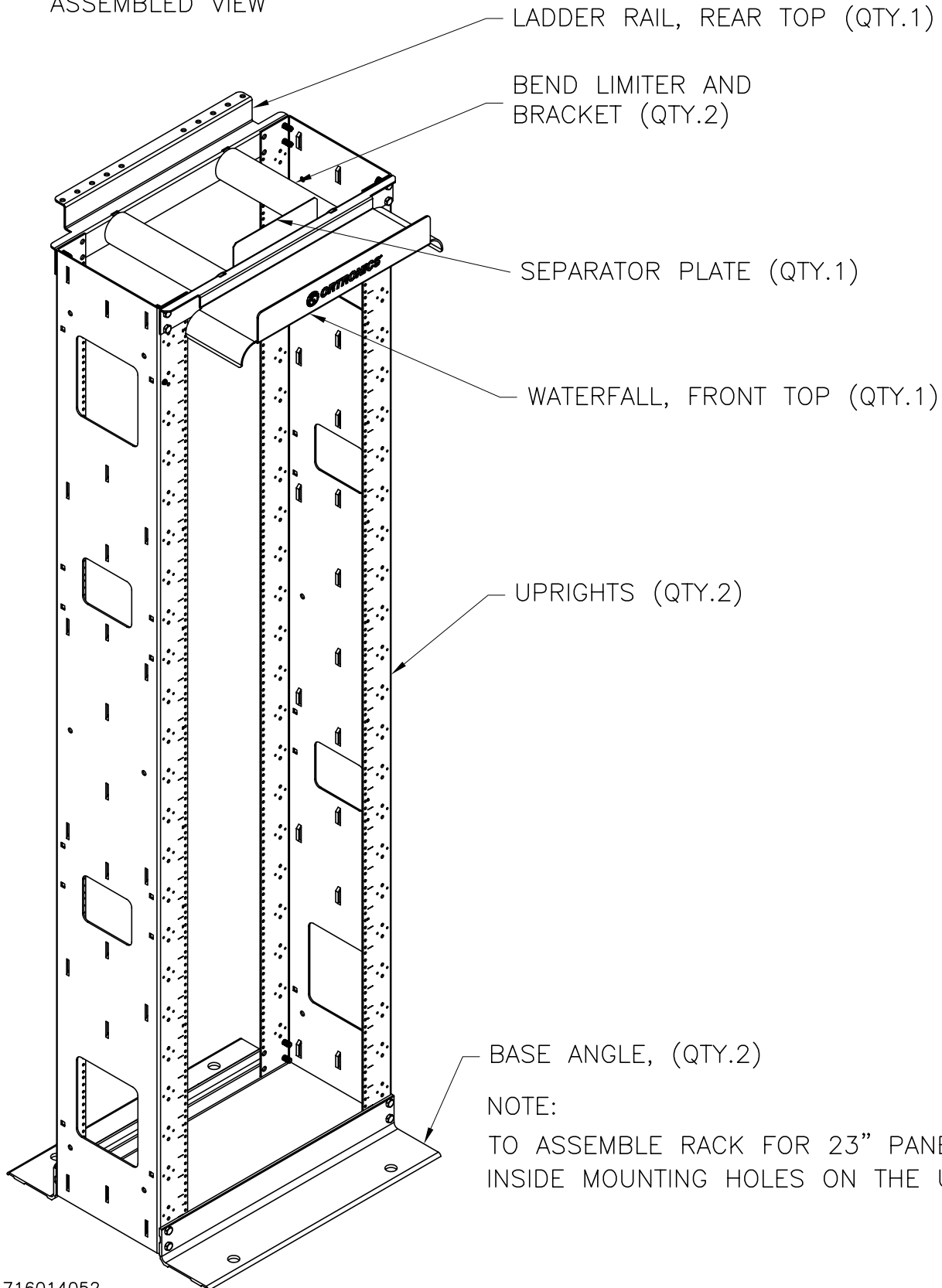
ORTRONICS®

125 EUGENE O'NEILL DRIVE
NEW LONDON, CT 06320
TEL: 860-445-3800
FAX: 860-405-2990

TITLE

**MIGHTY MO 6
CABLE MANAGEMENT RACK**

RACK FOR 19" PANEL (AS SHOWN) TYPICAL
ASSEMBLED VIEW



BASE ANGLE, (QTY.2)

NOTE:

TO ASSEMBLE RACK FOR 23" PANELS USE THE
INSIDE MOUNTING HOLES ON THE UPRIGHTS.

716014052

INSTRUCTION SHEET #	REV.	ECN #	SHEET	DWN.BY:	DATE	CHK.BY:	DATE	APP.BY:	DATE
OR-71601405	03	04009	2 of 4	LEVESQUE	11/10/09	CAC	11/30/09	W. DIETZ	12/01/09



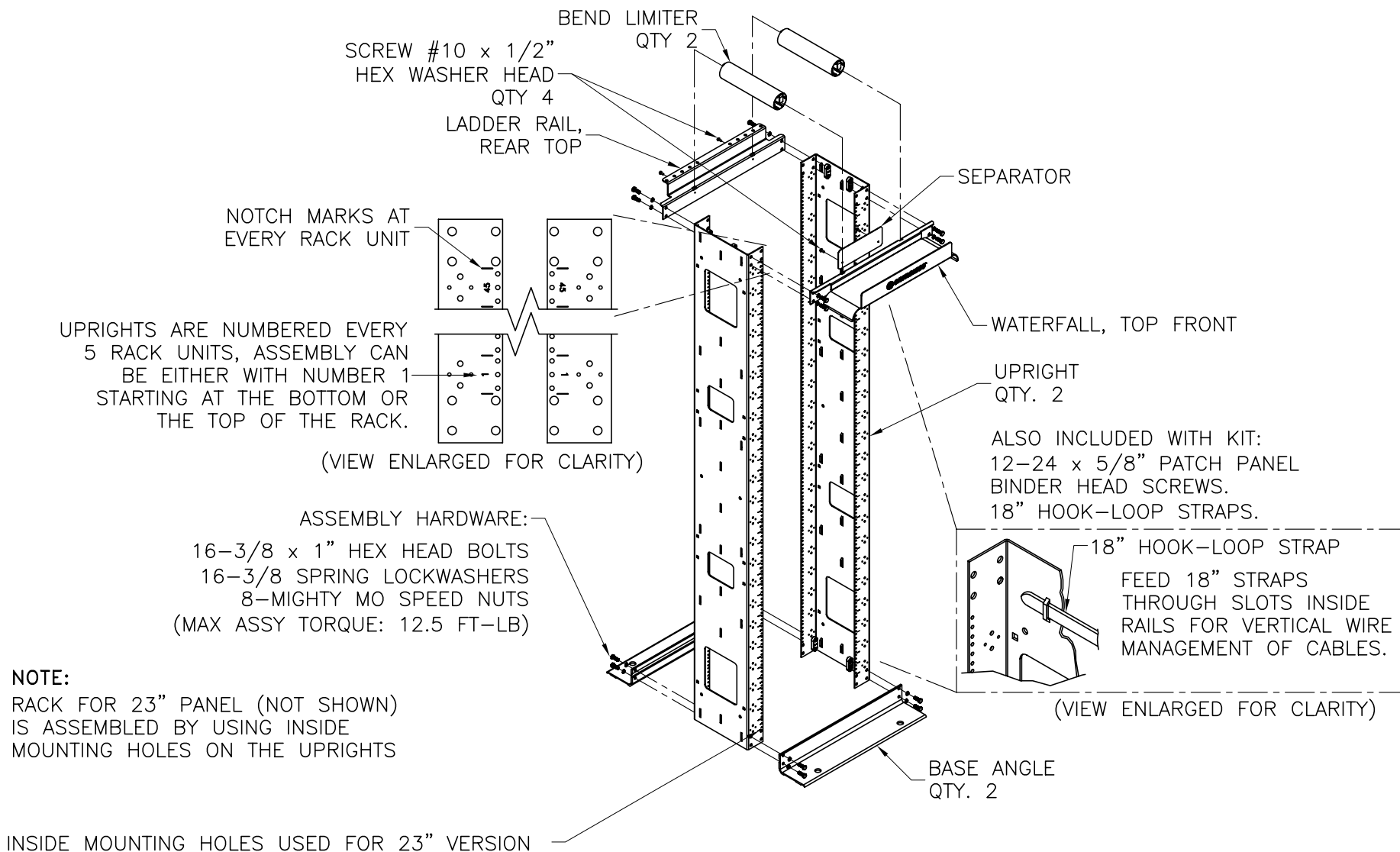
ORTRONICS®

125 EUGENE O'NEILL DRIVE
NEW LONDON, CT 06320
TEL: 860-445-3800
FAX: 860-405-2990

TITLE

MIGHTY MO 6 CABLE MANAGEMENT RACK

RACK FOR: 19" PANEL (SHOWN) ASSEMBLY FIGURES.



716014053

INSTRUCTION SHEET NUMBER	REV	ECN	SHEET	DWN.BY:	DATE	CHK.BY:	DATE	APP.BY:	DATE
OR-71601405	03	04009	3 OF 4	LEVESQUE	11/10/09	CAC	11/30/09	W. DIETZ	12/01/09



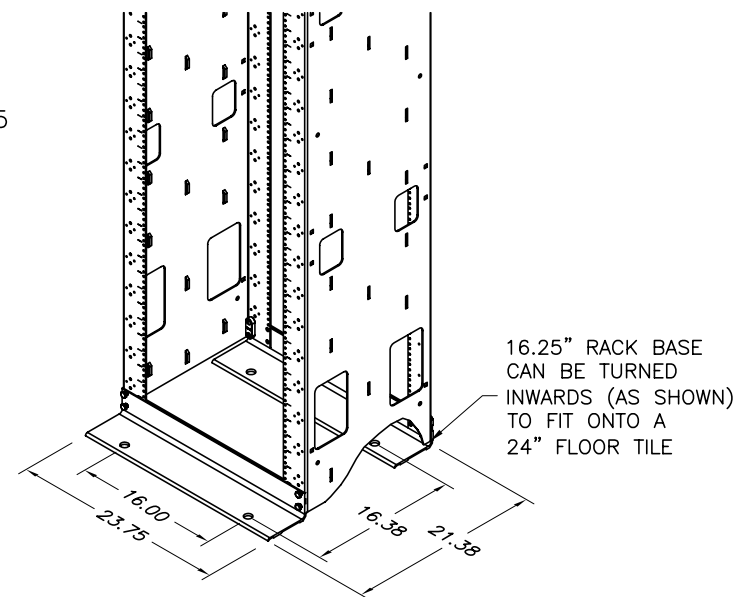
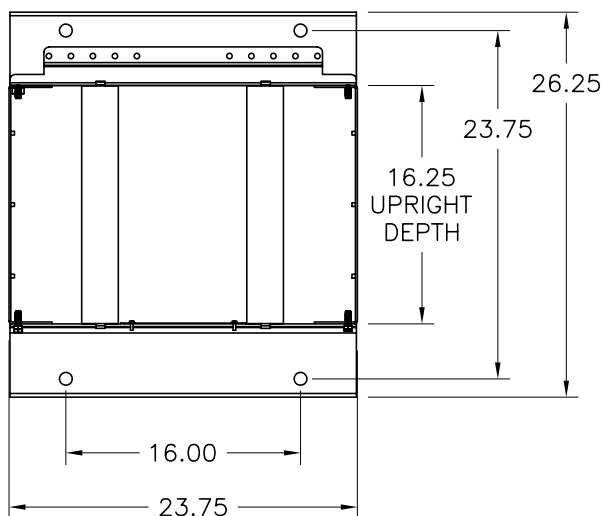
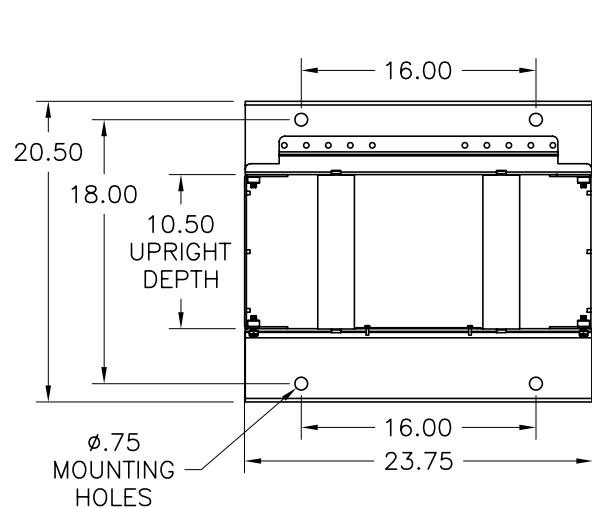
ORTRONICS®

125 EUGENE O'NEILL DRIVE
NEW LONDON, CT 06320
TEL: 860-445-3800
FAX: 860-405-2990

TITLE

MIGHTY MO 6 CABLE MANAGEMENT RACK

FLOOR MOUNTING OPTIONS



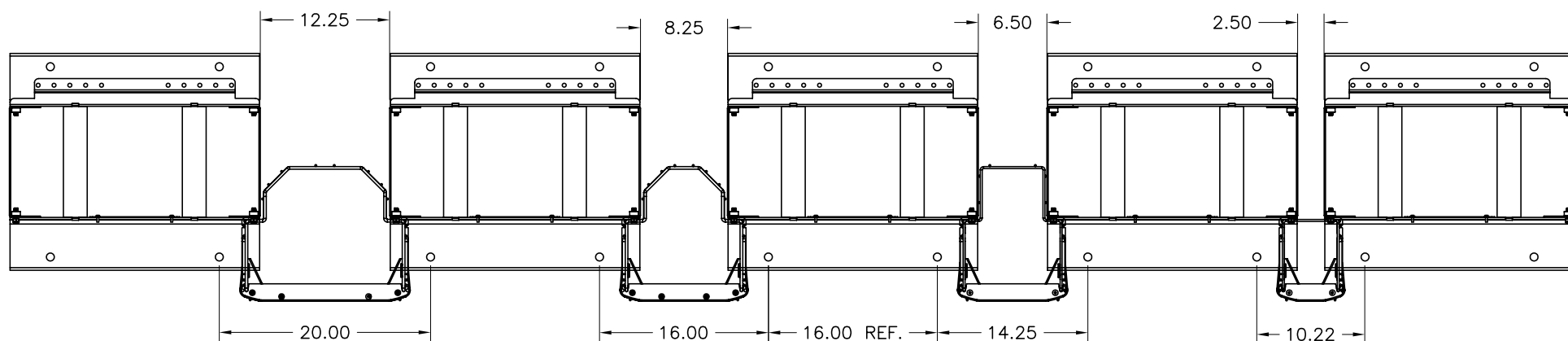
SINGLE RACK LAYOUT

MULTIPLE RACK SPACER, 3 PROVIDED.

USE UNMARKED END FOR STARTING



USES RACK ASSEMBLY HARDWARE, LOCATE AT BOTTOM AND TOP OF RACK BEFORE SECURING RACK TO THE FLOOR



RACK LAYOUT FOR 16" "Y" SHAPE CAGE

RACK LAYOUT FOR 12" "Y" SHAPE CAGE

RACK LAYOUT FOR 10" "Y" SHAPE CAGE

RACK LAYOUT FOR 6" CAGE

716014054

INSTRUCTION SHEET NUMBER
OR-71601405

REV
03

ECN
04009

SHEET
4 OF 4

DWN.BY:
LEVESQUE

DATE
11/10/09

CHK.BY:
CAC

DATE
11/30/09

APP.BY:
W. DIETZ

DATE
12/01/09