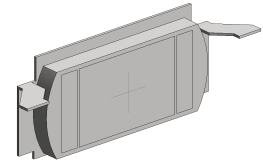




## Wiremold

# REVIT CONTENT GUIDE



<b>Manufacturer:</b>	Legrand   Wiremold
<b>File:</b>	Device_Plate-Resource_Series-Wiremold-RFB4.rfa
<b>Type Catalog:</b>	Device_Plate-Resource_Series-Wiremold-RFB4.txt
<b>Rendering file:</b>	Not Applicable
<b>Schedule file:</b>	Schedule - Floor_Box-Resource_Series-Wiremold-RFB4.rvt

## Instance Properties

Graphics	
Has Snap Locations	<input checked="" type="checkbox"/>
Identity Data	
Equipment Number	
Part Description	
Part Number	

## Type Properties

The family contains the following 1 types:  
Use Type Catalog (Values for this type are shown below)

Constraints	
Default Elevation	48.000
Geometry	
Depth	0.000
Height	0.000
Width	0.000
Identity Data	
Copyright	Copyright © Legrand   Wiremold
Date Last Modified	October 22, 2012
Equipment Abbreviation	DP
Family Version	1.0.0
Manufacturer	Legrand   Wiremold
Model Disclaimer	Contact Legrand   Wiremold for more information
Original Creation Date	October 22, 2012
Product Documentation Link	
Product Page URL	<a href="http://www.legrand.us/wiremold/floor-boxes/concrete-floor-boxes/rfb4-four-compartment-single-or-multiservice-floor-box/rfb-b-internal-blank-bracket.aspx#.UMfPpXfw71U">http://www.legrand.us/wiremold/floor-boxes/concrete-floor-boxes/rfb4-four-compartment-single-or-multiservice-floor-box/rfb-b-internal-blank-bracket.aspx#.UMfPpXfw71U</a>
Provide Feedback	<a href="https://www.surveymonkey.com/s/BDXT5XT">https://www.surveymonkey.com/s/BDXT5XT</a>
URL	<a href="http://www.legrand.us/wiremold.aspx">http://www.legrand.us/wiremold.aspx</a>
Materials	
Product Material	Use Type Catalog

Halftone text in the property tables indicates that the value is locked from editing.

## Loading and Placing into the Project:

One "Electrical Fixtures" family is supplied and can be loaded into only through they Type Catalog method. This can be done via the 'Insert' tab in Revit. However, the .txt file must accompany the family file for this to work properly. Users select the desired type in the resulting dialog box and click insert to load the desired types.

The device plate requires a host to be placed within the project (i.e. inside faces of floor boxes). Also, ensure that the visibility settings within the project are modified to have the Electrical Fixtures category visible.

## Project Behavior:

Within the type properties, the user will find useful information about the product by following the URL links given. The user will also find family revision information, Legrand | Wiremold copyright information, part description, product URL and other specific data. \*See scheduling description below.

Device plate file names closely resemble those of their corresponding floor box family. Once the floor box is placed in a project, the 'Has Cover' checkbox parameter on the box will temporarily turn the cover off for device plate placement. Halftone crosshairs exist inside the box to assist in placement of face hosted elements (Device Plates). During element placement, these crosshairs will give a snap-in-place behavior while hovering the cursor over them. The 'Has Snap Locations' checkbox will turn the visibility of these lines off once device placement is complete.

In similar fashion, each device plate includes 'Snap Locations' for device placement on the plate.

Refer to product documentation for more information regarding included hardware, device plate intended location, requirements, sizes and options.

## Instance Parameters:

In the "Instance Parameters", the user has the following options to modify:

- Has Snap Locations – turns off/on the crosshairs for placing devices on the device plate

## Type Parameters:

Each type represents a manufactured product. Therefore, the type parameters should not be modified by the user. Please note:

- Product Documentation Link – Directs a webpage to the products online listing.

- Equipment Abbreviation – For filtering schedules. \*See scheduling description below.

## Visibility:

For best performance, all model geometry is turned off in Plan View and represented through masking regions and symbolic/model lines that update automatically when a user changes types. Model lines on the face of the plate represent the connection pattern for compatible devices. Refer to product documentation for more information.

## Rendering:

When the family file is loaded into the project, standard Legrand | Wiremold materials are imported. These may be modified, though ensure that the modification selection matches an actual manufacturer supplied option.

## Schedule Creation:

LeGrand | Wiremold products may be scheduled utilizing the schedule view in the given project file. Project schedules are available for each floor box and match the floor box file name. Device plate schedules are also available. Select and copy (Ctrl-C) the schedule from the sheet view and paste it (Ctrl-V) into a sheet in your project. The schedule filters are set to look for only those units designated with Manufacturer as "LeGrand | Wiremold" and Equipment Abbreviation as "DP". The schedules contain special functionality for displaying the configured order numbers of the different selected types.