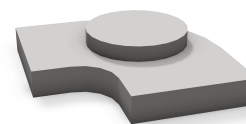




Wiremold

REVIT CONTENT GUIDE

Manufacturer: Legrand | Wiremold
File: Elbow-Walkerduct-Wiremold-Horizontal.rfa
Type Catalog: Not Applicable
Rendering file: Not Applicable
Schedule file: Schedule - Walkerduct.rvt



Instance Properties

Construction	
Access Height	1.000
Access Height Desired	1.000
Dimension	
Availability	Available
Graphics	
Has Data	<input type="checkbox"/>
Has Power	<input type="checkbox"/>
Has Snap Locations	<input type="checkbox"/>
Identity Data	
Equipment Number	
Part Description	Horizontal Elbow with Access Unit for No. 4 Duct
Part Number	H338AU-1

Type Properties

The family contains the following 3 types:
No. 4 (Values for this type are shown below)
No. 2
No. 4 with Access Unit

Dimension	
Depth	10.500
Height	1.500
Width	6.500

Identity Data	
Copyright	Copyright © Legrand Wiremold
Date Last Modified	March 15, 2013
Description	See Part Description
Equipment Abbreviation	WKD
Family Version	1.0.0
Manufacturer	Legrand Wiremold
Model	See Part Number
Model Disclaimer	For More Information, Contact Legrand Wiremold
Original Creation Date	March 15, 2013
Product Documentation Link	http://www.legrand.us/~ /media/48C336703D784C6F9F7507EB2B9B12D2.ashx
Product Page URL	http://www.legrand.us/wiremold/infloor-ducts/ducts/walkerduct-proseries-underfloor-duct.aspx#.UZv8DsQ0424
Provide Feedback	https://www.surveymonkey.com/s/BDXT5XT
URL	http://www.legrand.us/wiremold.aspx
Materials	
Product Material	Steel - Wiremold

Half-tone text in the property tables indicates that the value is locked from editing.

Loading and Placing into the Project:

One “Electrical Fixtures” family is supplied and can be loaded into a Revit project through all traditional methods. The Elbow requires a work-plane host to be placed within the project (i.e. floor). Tab spacebar to change the direction of the elbow after placement. Also, ensure that the visibility settings within the project are modified to have the Electrical Fixtures category visible.

Project Behavior:

Within the type and instance properties dialogues, the user will find useful information for scheduling purposes such as Height, Width, Access Height Desired and other unique properties of the model. In “Identity Data” the user will find information specific to Legrand | Wiremold and the model, i.e.: family revision information, Legrand | Wiremold copyright information, part description, product URL and other specific data. *See scheduling description below.

The Access Height Desired will affect how far into the ground the elbow will sit. The elbow has snap locations on each side to allow for the placement of reducers and other fittings.

The families share a common offset location, this gives the user the ability to select all models (with the exception of any face based families) within the project and apply an intended offset into the ground.

Instance Parameters:

In the “Instance Parameters”, the user has the following options to modify:

- Equipment Number – For tagging each placed instance.
- Has Snap Locations – Toggles the visibility of the snap location crosshairs.
- Access Height Desired – Input for desired height of access unit.
- Has Power – For toggling the visibility of the power decoration lines.
- Has Data – For toggling the visibility of the data decoration lines.

Type Parameters:

Each type represents a manufactured product. Therefore, the type parameters should not be modified by the user for standard configuration. Please note:

- Product Documentation Link – Directs a webpage to the products online listing.
- Equipment Abbreviation – For filtering schedules. *See scheduling description below.

Visibility:

For best performance, all model geometry is turned off in Plan View and represented through masking regions and symbolic/model lines that update automatically when a user changes types. For most families the viewing range will have to be lowered since no geometry is visible above the reference level.

Rendering:

When the family file is loaded into the project, standard Legrand | Wiremold materials are imported. These may be modified, though ensure that the modification selection matches an actual manufacturer supplied option.

Schedule Creation:

Legrand | Wiremold products may be scheduled utilizing the schedule view in the given project file. Select and copy (Ctrl-C) the schedule from the sheet view and paste it (Ctrl-V) into a sheet in your project. The schedule filters are set to look for only those units designated with Manufacturer as “Legrand | Wiremold” and Equipment Abbreviation as “WKD”. The schedules contain special functionality for displaying the configured order numbers of the different selected types.