



## Wiremold

# CBR & HDR Series Risers

## INSTALLATION INSTRUCTIONS

Installation Instruction No.: 1 000 591R1 – Updated March 2010

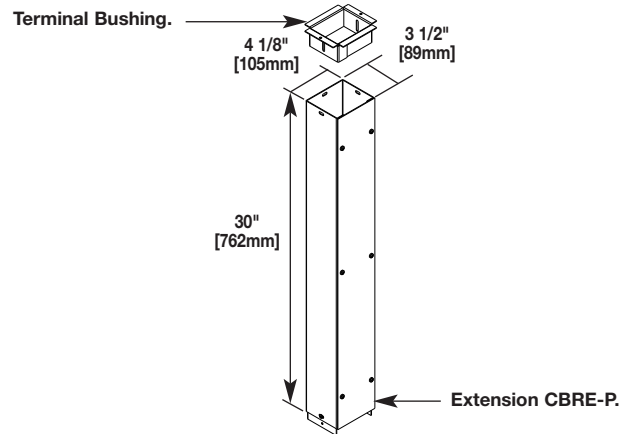
**Wiremold** electrical systems conform to and should be properly grounded in compliance with requirements of the current National Electrical Code or codes administered by local authorities.

All electrical products may present a possible shock or fire hazard if improperly installed or used. Wiremold electrical products may bear the mark as UL Listed and/or Classified and should be installed in conformance with current local and/or the National Electrical Code.

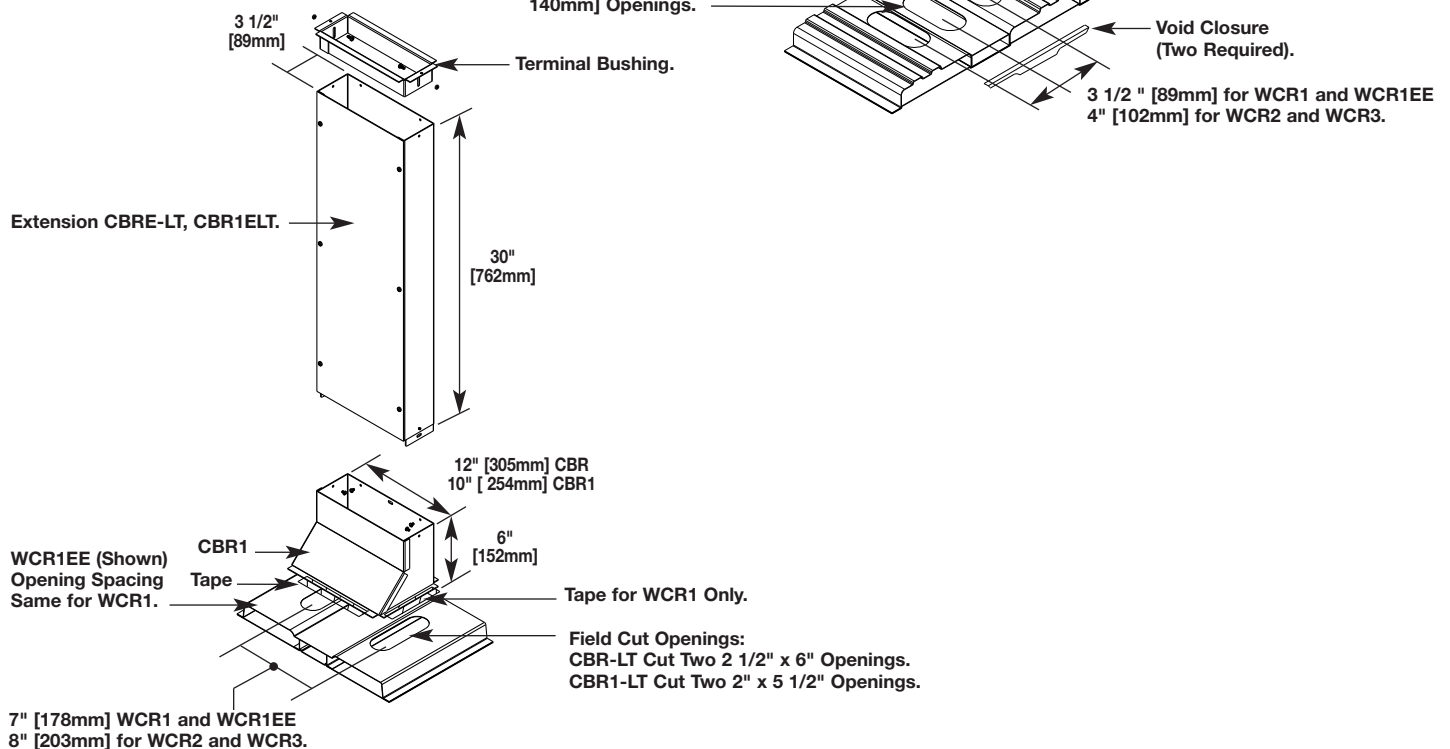
**IMPORTANT: Please read all instructions before beginning.**

1. Field cut opening in raceway (see Fig. 1 for LHT Risers and Fig. 2 for LT Risers).
2. Install grommets in holes. Remove all sharp edges exposed to wires.
3. Install void closure for WCR2 and WCR3. For WCR1 and WCR1EE, tape to close off opening between raceway and riser. For WCR1, tape sides to close off opening between raceway and riser.
4. Pop rivet or fillet weld riser in place. Exposed screw threads are not allowed inside of raceway.

**Figure 1 – LHT Riser**

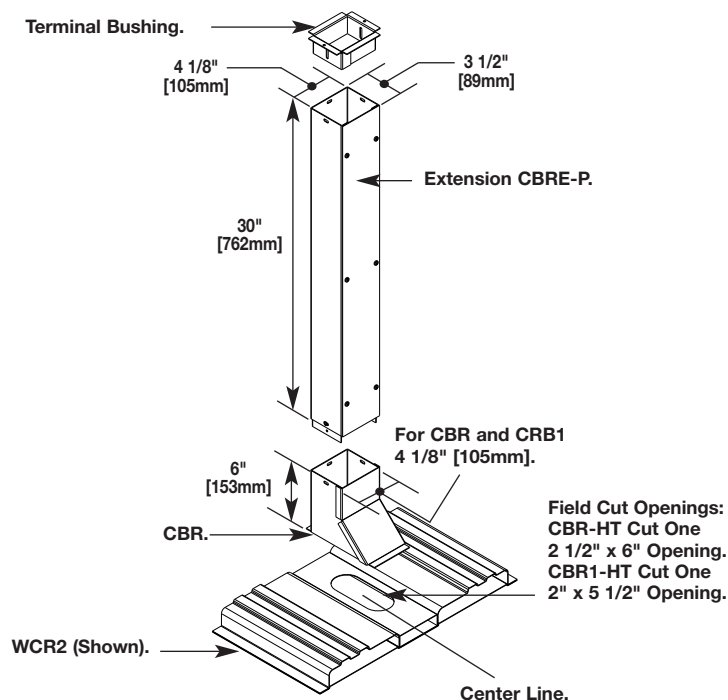


**Figure 2 – LT Riser**

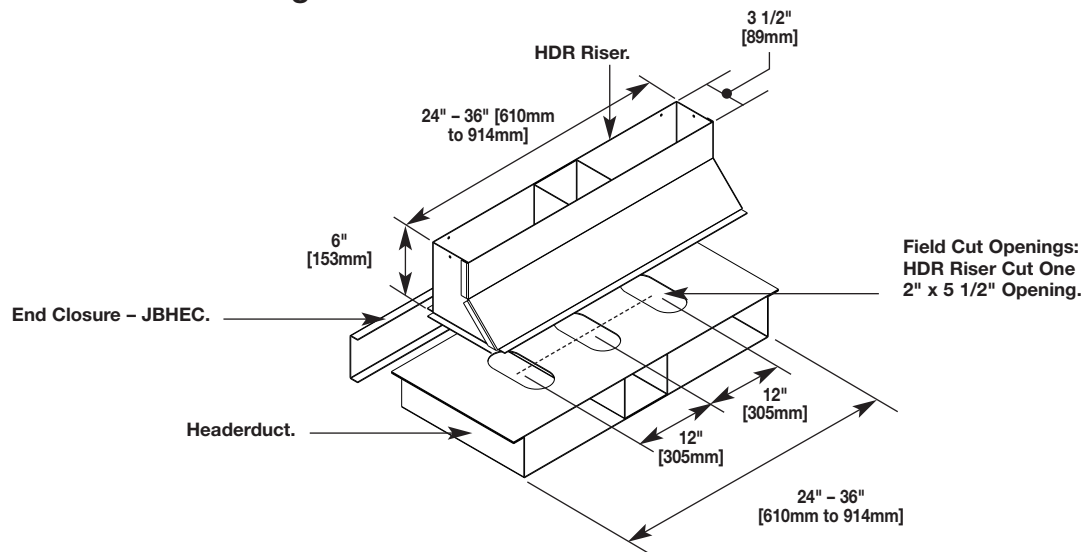


1. Field cut opening in raceway (see Fig. 3 for HT Riser and Fig. 4 for HDR Risers).
2. Install grommets in holes. Cover all sharp edges exposed to wires.
3. Pop rivet or fillet weld riser in place. Exposed screw threads are not allowed inside of raceway.
4. Install riser extension and terminal bushing as required.
5. Install headerduct end closure as shown (see Fig. 4).

**Figure 3 – HT Riser**



**Figure 4 – HDR Riser**



**Wiremold**

**Wiremold**

**U.S. and International:**

60 Woodlawn Street • West Hartford, CT 06110  
1-800-621-0049 • FAX 860-232-2062 • Outside U.S.: 860-233-6251

**Canada:**

570 Applewood Crescent • Vaughan, Ontario L4K 4B4  
1-800-723-5175 • FAX 905-738-9721

