



## Wiremold

# PK Preset Activation Kit with Extended Receptacle Bracket

## INSTALLATION INSTRUCTIONS

Installation Instruction No.: 1 005 083R1 – Updated March 2010

**Wiremold** electrical systems conform to and should be properly grounded in compliance with requirements of the current National Electrical Code or codes administered by local authorities.

All electrical products may present a possible shock or fire hazard if improperly installed or used. Wiremold electrical products may bear the mark as UL Listed and/or Classified and should be installed in conformance with current local and/or the National Electrical Code.

**IMPORTANT: Please read all instructions before beginning.**

Products Covered: WPACREXT Series & DTB-2EXT Series

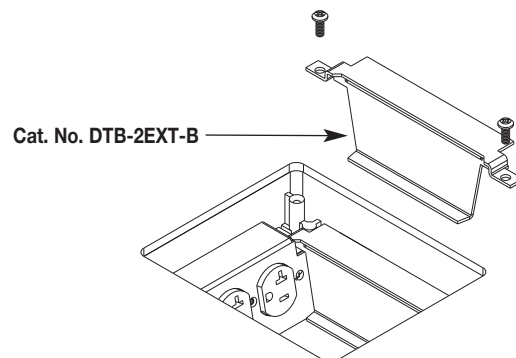
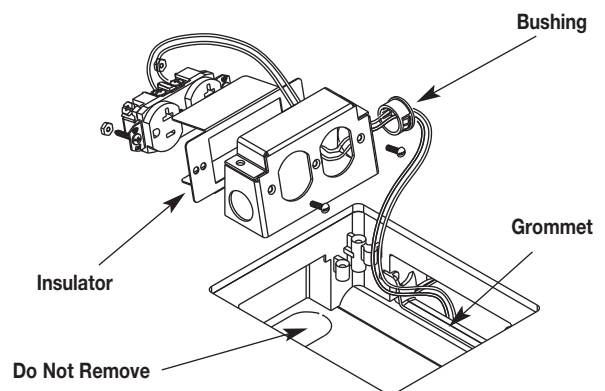
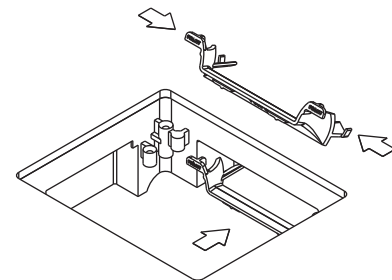
**NOTE:** Refer to the current version of Installation Instruction 1 002 300 for instructions on locating Preset and installing Grommet.

### Power Feed from Side Compartment:

1. Do not remove knockout from center compartment.
2. Pull electrical wires through grommet hole in side compartment.
3. Remove knockout from receptacle housing and install bushing. Route wires through bushing and attach to Listed receptacle.
4. Trim receptacle insulator to fit inside of housing and position over receptacle.
5. Attach receptacle with insulator to receptacle housing with two #6-32 screws and nuts (not included). Place housing assembly in PK Insert and arrange wires to clear side closure.
6. Repeat steps 1 through 5 for other receptacle bracket.

**NOTE:** Bracket must be installed even if second Receptacle is not required

7. fasten side closure (Cat. No. DTB-2EXT-B) to preset as shown.

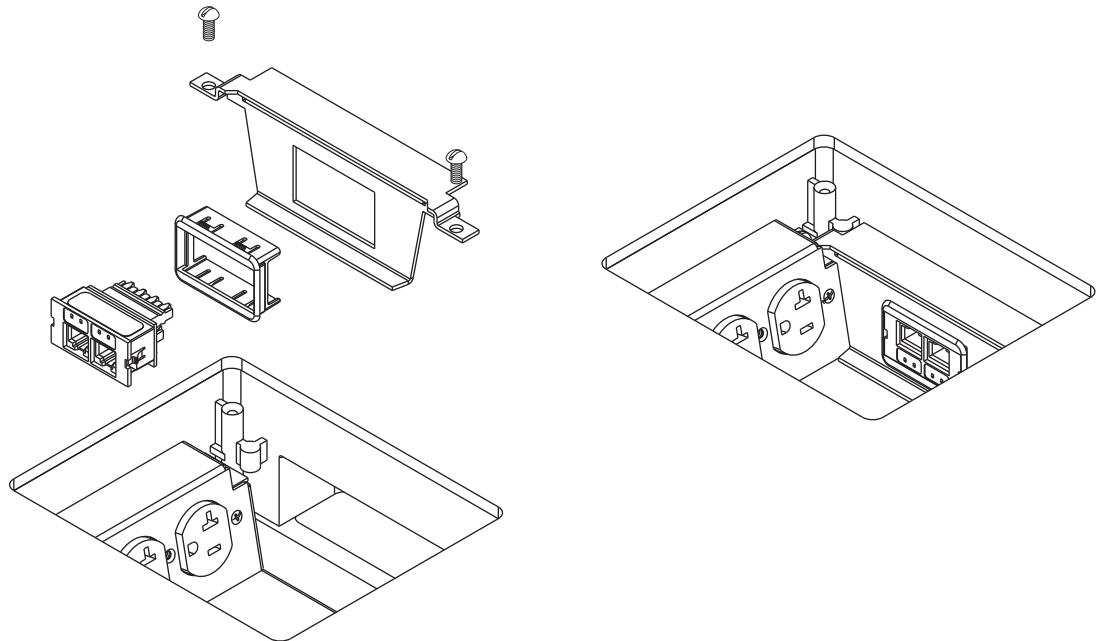


---

## Power Feed from Center Compartment:

**NOTE:** *Install Receptacle Housing and Grommets as shown in the current version of Installation Instruction 1 002 300.*

1. Do not remove knockout in side of receptacle housing.
2. Communications Bracket Series DTB-2EXT may only be used on outboard cells designated for communication wiring, and only with WPACREXT Series Receptacle Housings.



**Wiremold**

### Wiremold

#### U.S. and International:

60 Woodlawn Street • West Hartford, CT 06110

1-800-621-0049 • FAX 860-232-2062 • Outside U.S.: 860-233-6251

#### Canada:

570 Applewood Crescent • Vaughan, Ontario L4K 4B4

1-800-723-5175 • FAX 905-738-9721

