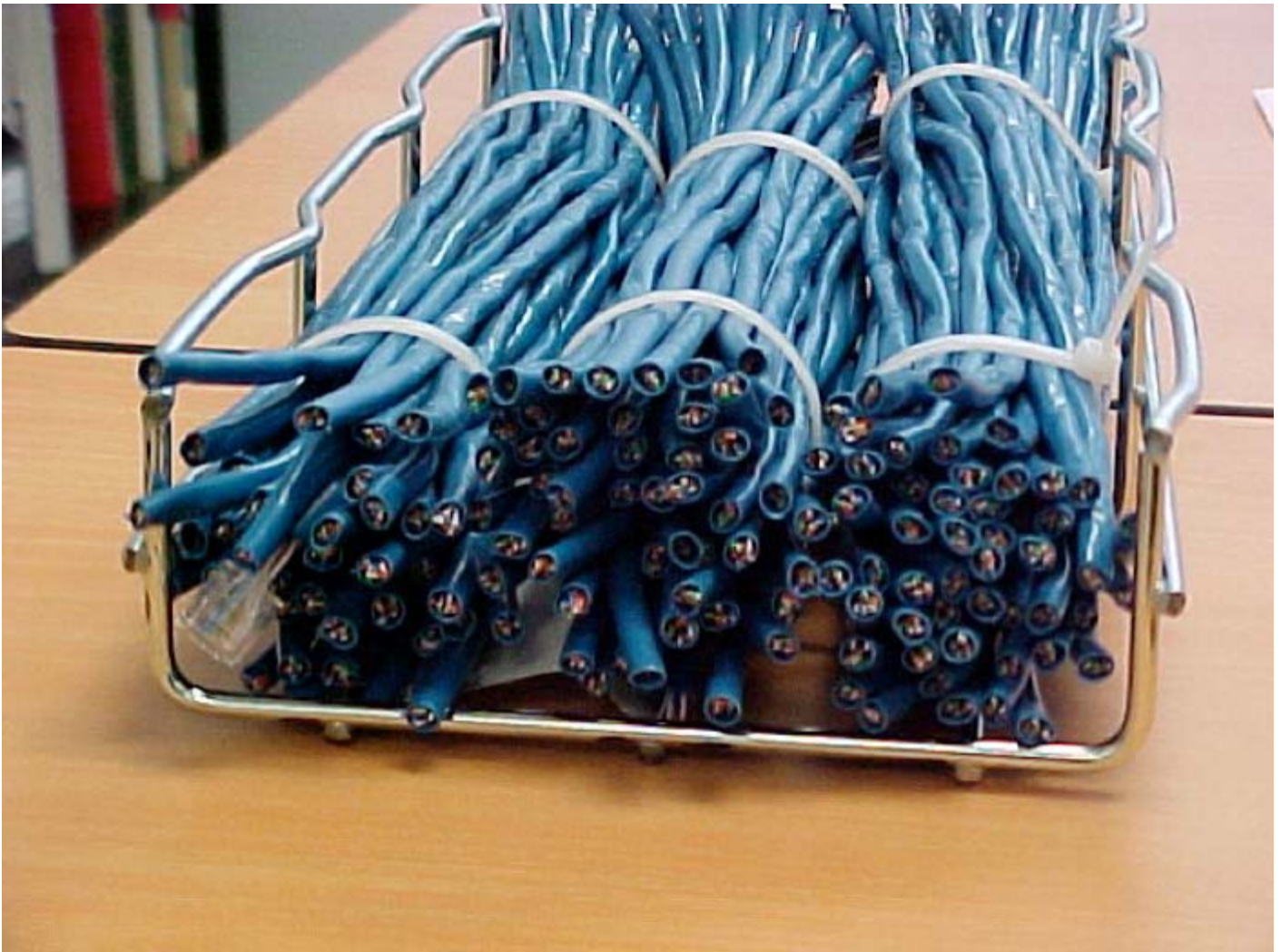


50% Fill is Full!

- NEC 50% FILL is FULL!
 - Lets Do the Match
 - EXAMPLE:
 - 2x6 (54-150) Cablofil = 12 sq in of area
 - Per NEC 50% rule $12/2 = 6$ sq in space for cables.
 - Cat 5e cable = .21 in (DIA) = $3.14(.21)^2/4 = .04$ sq in
 - 6 sq in / .04 sq in = 150 cables
 -
 - So what does 150 cat 5e cables look like in a 2x6 (54-150) wire mesh tray?

BICSI 2006



- 50% Fill is FULL
 - 3 bundles of QTY 50 cat 5e cables (tightly bundled)