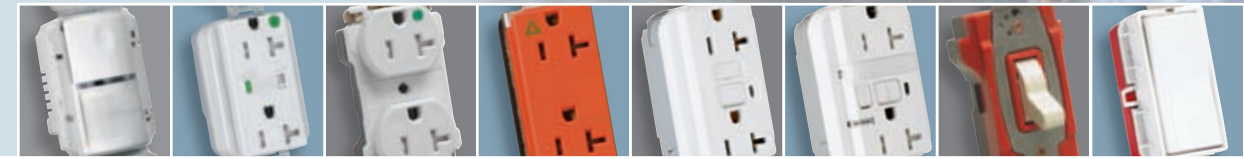
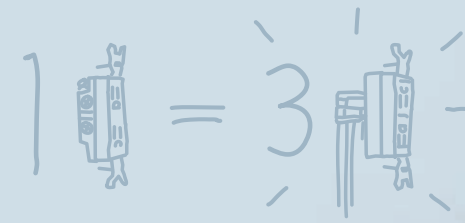


New devices.  
New upgrade opportunities.

**New ways to increase  
profit margins.**



# P&S PlugTail™ Wiring Devices — the most complete line to keep you profitable on any commercial job.



## Introducing P&S PlugTail Sensors and Surge Protection Devices.

Kick even more tail on the job with the expanded P&S PlugTail family of wiring devices. With the addition of P&S PlugTail Sensors and Surge Protection Devices, we continue to offer the most complete line of wiring device solutions for today's challenges. P&S PlugTail devices give you more control over labor costs and jobsite risks. And with more products to choose from, you also have more upgrade opportunities than ever.

With P&S PlugTail, you can move your complex tasks to the front of the project. **At rough-in**, install the pre-stripped leads of a P&S PlugTail connector instead of pigtails. **At device installation**, click in the connector and tighten the mounting screws — done in less than a minute.

**Beat  
impossible  
deadlines.**

In 2004, Legrand/Pass & Seymour revolutionized the industry with the introduction of P&S PlugTail wiring devices. Today, this expanded family of patented devices helps contractors across the continent kick even more tail by beating “impossible” deadlines, better managing labor and reducing jobsite risks — all while providing superior installations.

### Twist, click, screw, **DONE.**

#### Your productivity gains begin at rough-in.

Instead of making pigtails, simply connect the pre-stripped P&S PlugTail Connector leads. In one simple step, you're ready for fast, easy device installation at any time.

#### Device installation takes less than a minute.

Just plug the connector into the P&S PlugTail device.

- no preparing, stripping or looping the conductors
- no taping terminals
- no mistakes resulting in rework or callbacks

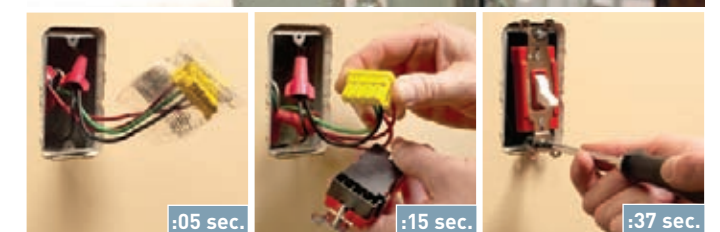
#### A faster, more reliable installation.

P&S PlugTail installation is three times faster than conventional device installation — saving you the most time at the end of the project when you're fighting completion pressure. With no exposed terminals, you can power-up and test a circuit at any time once the connectors are installed.

Whether the work is done by a first-year apprentice or by your most experienced installer, every P&S PlugTail device will be installed correctly.

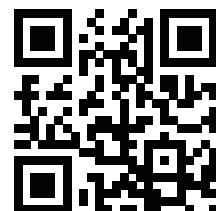
#### Happier installers. Happier customers.

Because P&S PlugTail installation's a lot easier on the knees and fingers, your installers benefit. And because it delivers dependability, quality and easier, safer service for years to come, your customers benefit, too.

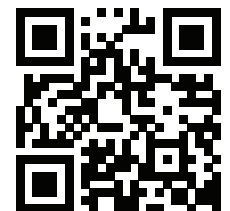


When it's time for finish wiring, just remove the plastic wrapper. Connect the P&S PlugTail device with just one click. Mount the device to the box — and you're done.

Scan this code and visit our mobile website. It's a great on-the-job reference source for all things P&S PlugTail.



Scan this code and learn how you can simplify switch installation with P&S PlugTail Switches.



# More P&S PlugTail™ solutions give you more control at more jobsites.



PTTR63HW

## Healthcare

When it comes to healthcare installations, it's all about safety, simplicity, and dependability. That's what makes the P&S PlugTail line so attractive. They not only meet stringent safety and compliance requirements, they make change outs and upgrades quick and easy.

### CODE TIP ...

Tamper-Resistant solutions meet *NEC*® section 517.18(C) requirements in pediatric-care areas.



PTTR5362WSP

## Education & Institution

The installation and risk management benefits of P&S PlugTail give you a competitive edge when bidding on institutional, college and university jobs. And when you consider that academic and government schedules often drive tight construction schedules, P&S PlugTail makes good economic sense.

### APPLICATION TIP ...

Surge Protection Devices protect expensive electrical equipment from damage caused by surges and spikes.



PTWSP250W

## Retail, Office, & Entertainment

In a world of fast setups, demanding deadlines, and increasing energy use, P&S PlugTail is right at home. That's because they're dependable, safe, and incredibly easy to install. When you need to meet the often unrealistic demands of developers, you need P&S PlugTail.

### APPLICATION TIP ...

Energy use is the second largest expense in commercial buildings. Occupancy Sensors can cut that expense by as much as 60%.



PT2095NTLTRW

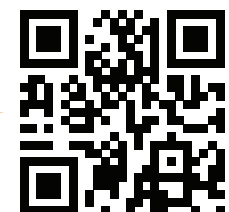
## Hospitality & Multiple Dwelling

The demands of investors and building owners are clear: they want code-compliant wiring devices that not only look good, but can stand up to the hard knocks of a hotel environment. And they want the job done now. Enter P&S PlugTail devices.

### CODE TIP ...

2011 *NEC*® Section 406.4(D)(5) requires tamper-resistant receptacles in guest rooms and guest suites.

Scan this code and find the right P&S PlugTail solution to your market challenge.



# The most complete family of productivity-boosting wiring devices.



PT2095LA



PT2095HGNTLTRW



PT8300I



PTTR8300WSP

## Spec Grade GFCIs

- **Patented SafeLock™ Protection** — if critical components are damaged and ground fault protection is lost, power to the receptacle is disconnected.
- **The most durable GFCI available** — exceeds UL®943 voltage requirement; survives 100X the required UL 3kA/6kA voltage surge test cycles.
- **GFCI available in combination with an automatic sensor LED nightlight** for added safety and convenience.

## Hospital Grade GFCIs

- **Tamper-resistant models** provide the only single-device solution to meet *NEC*® requirements for pediatric care areas.
- **LED makes it easy to spot a tripped condition.**
- **LED Nightlight/GFCI Combination** provides added safety.



### NAFTA-COMPLIANT

- Works for you to reap the rewards of stimulus-funded public works opportunities
- P&S PlugTail™ GFCIs and Right Angle Connectors meet the requirements of the Buy American Provision of the American Reconstruction and Reinvestment Act (ARRA)
- Same functionality, performance and productivity of our standard P&S PlugTail devices

## Extra Heavy-Duty Hospital Grade Receptacles

- **Circuit label on face** allows permanent circuit identification — an exclusive, patented feature.
- **Heavy-gauge, solid-brass strap.**
- **Receptacle connector features large brass terminal blades** for durable connections.
- **Uniquely illuminated receptacle** model is perfect for emergency-circuit applications.



PT8300ILRED



## Surge Protection Devices

- **Fit the same box and use the same tails** as our P&S PlugTail GFCIs and receptacles for easy upgrades.
- **Automatically safeguards** electronic equipment from energy surges and spikes.
- **The only device** with both flashing indicator alert light and audible tone.
- **Available in** Isolated Ground, Hospital Grade and Tamper-Resistant models.

## Receptacle Connector

- **Right-Angle Connector** features pre-stripped leads for faster installation.
- **Connector contacts are crimped and welded** to ensure solid electrical connections.
- **Fits flush with device** back to leave more room in the box.



PT26352LA



PT2623W



PT20AC1W



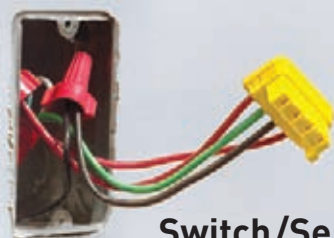
PTWSP250W

### Spec Grade Receptacles & Switches

- **No exposed terminals** — increases safety in all phases of installation and use.
- **Tamper-Resistant Receptacle models** ensure child safety.
- **Heavy-gauge, plated-steel strap** wraps around body and face to form a rigid structure.
- **Auto-ground clip** ensures grounding or provides redundant grounding in pipe-and-wire applications.
- **P&S PlugTail™ Switches are available in 120/277 and 347V solutions.**

### Spec Grade Switches

- **Shallow design** for easier installation.
- **Illuminated solutions** for pilot and lighted applications.
- **No exposed parts** for finger-safe application.



#### Switch/Sensor Connector

- **Right-Angle Connector** features pre-stripped leads for faster installation.
- **Connector contacts are crimped and welded** to ensure solid electrical connections.
- **3-wire solutions for single-pole; 4-wire solutions for 3-way applications.**

### Extra Heavy-Duty Switches

- **Available in 120/277 and 347V solutions.**
- **Switch connector features large brass terminal blades** for durable connections.
- **Glass-reinforced nylon back body.**
- **One-piece nickel-plated strap.**

#### SPEC TIP . . .

P&S PlugTail™ devices meet Fed Spec Performance Standard WC596 for receptacles and WS896 for switches. FSUL clearly marked on receptacle and switch mounting strap.

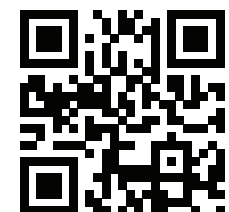
### Sensor

- **Meets ASHRAE energy efficiency and government incentive requirements.**
- **Fits existing P&S PlugTail Switch box** and switch connector for easy upgrades designed to save up to 60% in energy costs.
- **Productivity-enhanced installation** of P&S PlugTail, combined with same design and function of our popular sensors line.



P&S PlugTail Sensors conserve energy by sensing when light is needed and when it is not — and responding accordingly.

Scan this code for more details on our entire family of P&S PlugTail devices.



# Even more productivity.



MRC2 MRC1

## P&S Mud Ring Covers

- **Protects electrical box opening** from dust, debris, and other contaminants.
- **Removes easily** upon installation of the device.



PT-Tester

## P&S PlugTail™ Tester

Enables users to quickly test installed receptacles and, unlike other testers, connectors as well.



MBD4S1SPTSTR

## P&S PlugTail Metal-Box Kit

Metal-box solutions feature pre-installed P&S PlugTail Connectors. With the ground wire pre-mounted to the box and the mud ring factory-installed, this solution will reduce waste and time on the job. At device-out, remove the P&S PlugTail poly-bag protection and install the device.



PSW15825

## P&S PlugTail Power™ Pre-Fabricated Wiring System

- **P&S PlugTail right angle push-in connector** for instant connection of additional conductors.
- **Pre-mounted steel wall box**, single-gang or two-gang.
- **Pre-mounted mud ring** available in 5/8" or 3/4" rise.
- **Pre-installed P&S PlugTail Connector** for one-click termination.

PlugTail Power floor brackets slide under the sill plate and establish an automatic 18-inch mounting height, and screw directly to the studs.

PSF1185825

## P&S PlugTail™ Receptacles

Catalog Number	Description	Ratings A. V.	NEMA Config. No.
<b>Specification Grade Receptacles</b>			
PT5262A*	Extra Heavy-Duty	15A 125V	5-15R
PT5362A*		20A 125V	5-20R
PTTR62*	Extra Heavy-Duty — Tamper-Resistant	15A 125V	5-15R
PTTR63*		20A 125V	5-20R
PT26252*	Decorator	15A 125V	5-15R
PT26352*		20A 125V	5-20R
PTIG26262*	Decorator — Isolated Ground	15A 125V	5-15R
PTIG26362*		20A 125V	5-20R
PT5262*	Duplex — Fed Spec Grade	15A 125V	5-15R
PT5362*		20A 125V	5-20R
PTTR5262*	Duplex — Fed Spec Grade Tamper-Resistant	15A 125V	5-15R
PTTR5362*		20A 125V	5-20R
PT5262SC*	Duplex — Fed Spec Grade — Split Circuit	15A 125V	5-15R
PT5362SC*		20A 125V	5-20R
PTTR5262SC*	Duplex — Fed Spec Grade — Split Circuit Tamper-Resistant	15A 125V	5-15R
PTTR5362SC*		20A 125V	5-20R
PTIG5262*	Duplex — Isolated Ground	15A 125V	5-15R
PTIG5362*		20A 125V	5-20R
<b>Hospital Grade Receptacles</b>			
PT8200*	Extra Heavy-Duty	15A 125V	5-15R
PT8200IL*	Extra Heavy-Duty — Illuminated	15A 125V	5-15R
PT8300*	Extra Heavy-Duty	20A 125V	5-20R
PT8300IL*	Extra Heavy-Duty — Illuminated	20A 125V	5-20R
PTTR8200*	Duplex — Fed Spec Grade — Tamper-Resistant	15A 125V	5-15R
PTTR8300*		20A 125V	5-20R
PTTR62H*	Extra Heavy-Duty — Tamper-Resistant	15A 125V	5-15R
PTTR63H*		20A 125V	5-20R
PT26262HG*	Decorator	15A 125V	5-15R
PT26362HG*		20A 125V	5-20R
PTTR26262HG*	Decorator — Tamper-Resistant	15A 125V	5-15R
PTTR26362HG*		20A 125V	5-20R
PTTR26262SC*	Decorator — Split Circuit — Tamper-Resistant	15A 125V	5-15R
PTTR26362SC*		20A 125V	5-20R
<b>Specification Grade GFCIs (Non feed-through type)</b>			
PT1595*	Duplex — Fed Spec Grade	15A 125V	5-15R
PT2095*		20A 125V	5-20R
PT1595NA*	NAFTA-Compliant Duplex — Fed Spec Grade I, W, LA, GRY	15A 125V	5-15R
PT2095NA*	NAFTA-Compliant Duplex — Fed Spec Grade I, W, LA, GRY, RED	20A 125V	5-20R
PT1595NLTTR*	Tamper-Resistant	15A 125V	5-15R
PT2095NLTTR*	LED Nightlight Combination	20A 125V	5-20R
PT1595NLTTRNA*	NAFTA-Compliant Tamper-Resistant LED Nightlight Combination, I, W	15A 125V	5-15R
PT2095NLTTRNA*		20A 125V	5-20R
PT1595TR*	Tamper-Resistant	15A 125V	5-15R
PT2095TR*		20A 125V	5-20R
PT2095TRNA*	NAFTA-Compliant Tamper-Resistant, I, W, LA, GRY	20A 125V	5-20R

**\*Color Designation**  
**I** Ivory  
**W** White  
**GRY** Gray  
**BK** Black  
**BL** Blue  
**RED** Red  
**LA** Light Almond

1. Blue only available in Spec Grade Duplex Receptacles
2. For Isolated Ground (IG) Receptacles, no color designation = Orange
3. For all other receptacles, no color designation = Brown



P&S PlugTail devices are available preinstalled in Legrand/Wiremold Prewired Raceway — which installs in one-third the time of conduit wiring.

## P&S PlugTail™ Receptacles

Catalog Number	Description	Ratings		NEMA Config. No.
		A.	V.	
<b>Hospital Grade GFCIs (Non feed-through type)</b>				
PT1595HG*	Duplex	15A	125V	5-15R
PT2095HG*		20A	125V	5-20R
PT2095HGNA	NAFTA-Compliant Duplex, I, W, LA, GRY, RED	20A	125V	5-20R
PT1595HGNTLTR*	Tamper-Resistant LED Nightlight Combination	15A	125V	5-15R
PT2095HGNTLTR*		20A	125V	5-20R
PT1595HGNTLTRNA*	NAFTA-Compliant Tamper-Resistant LED Nightlight Combination, I, W	15A	125V	5-15R
PT2095HGNTLTRNA*	NAFTA-Compliant Tamper-Resistant LED Nightlight Combination, I, W, RED	20A	125V	5-20R
PT1595HGTR*	Tamper-Resistant	15A	125V	5-15R
PT2095HGTR*		20A	125V	5-20R
PT2095HGNA*	NAFTA-Compliant Tamper-Resistant I, W, LA, GRY, RED	20A	125V	5-20R
<b>Surge Protection Devices — Audible Alarm with LED Indicator</b>				
PT5262*SP	Duplex — Extra Heavy-Duty	15A	125V	5-15R
PT5362*SP		20A	125V	5-20R
PTIG5262*SP	Duplex — Isolated Ground	15A	125V	5-15R
PTIG5362*SP		20A	125V	5-20R
PTTR5262*SP	Duplex — Tamper-Resistant	15A	125V	5-15R
PTTR5362*SP		20A	125V	5-20R
PT8200*SP	Hospital Grade — Extra Heavy-Duty	15A	125V	5-15R
PT8300*SP		20A	125V	5-20R
PTIG8200*SP	Hospital Grade — Isolated Ground	15A	125V	5-15R
PTIG8300*SP		20A	125V	5-20R
PTTR8200*SP	Hospital Grade — Tamper-Resistant	15A	125V	5-15R
PTTR8300*SP		20A	125V	5-20R

**Third-Party Compliance**  
cULus Listed, File Number E140596, Standard UL498, Federal Specification WC596 for receptacles and WS896 for switches.



**U.S. Patent No. 6,994,585**

P&S PlugTail Testers	
PT-Tester	Red P&S PlugTail Tester for Receptacles and Tails

Catalog Number	Wire Length and Type	Catalog Number	Wire Length and Type
<b>P&amp;S PlugTail Connectors for Receptacles</b>			
PTRA6STR	6" Stranded THHN12	PTRA6STRBP	6" Stranded THHN12 with WAGO
PTRA6SOL	6" Solid THHN12	PTRA6SOLBP	6" Solid THHN12 with WAGO
PTRA6STRG	6" Stranded THHN12 with fork terminal on the ground		
PTRA6STRNA	NAFTA-Compliant 6" Stranded THHN12		
PTRA6SOLNA	NAFTA-Compliant 6" Solid THHN12		

## P&S PlugTail™ Switches and Sensors

Toggle Style		
Catalog Number	Color	Amp
<b>Single Pole Toggle Switches</b>		
PT15AC1*	White, Ivory, Light Almond, Gray, Red, Brown, Black	15
PT15AC1*347		
PT20AC1*	White, Ivory, Light Almond, Gray, Red, Brown, Black	20
PT20AC1*347		
<b>Three-Way Toggle Switches</b>		
PT15AC3*	White, Ivory, Light Almond, Gray, Red, Brown, Black	15
PT15AC3*347		
PT20AC3*	White, Ivory, Light Almond, Gray, Red, Brown, Black	20
PT20AC3*347		
<b>Single Pole Lighted Toggle Switches</b>		
PT15AC1*SL	Clear, Ivory, White, Black	15
PT20AC1*SL		20
<b>Three-Way Lighted Toggle Switches</b>		
PT15AC3*SL	Clear, Ivory, White, Black	15
PT20AC3*SL		20

- \*Color Designation**
- I Ivory
  - W White
  - GRY Gray
  - BK Black
  - BL Blue
  - RED Red
  - LA Light Almond
- Blue only available in Spec Grade Duplex Receptacles
  - For Isolated Ground (IG) Receptacles, no color designation = Orange
  - For all other receptacles, no color designation = Brown

Decorator Style		
Catalog Number	Color	Amp
<b>Single Pole Decorator Switches</b>		
PT2601*	White, Ivory, Light Almond, Gray, Red, Brown, Black	15
PT2621*		20
<b>Three-Way Decorator Switches</b>		
PT2603*	White, Ivory, Light Almond, Gray, Red, Brown, Black	15
PT2623*		20
<b>Single Pole Illuminated Decorator Switches</b>		
PT2625*	White, Ivory, Light Almond, Black	20
<b>Three-Way Illuminated Decorator Switches</b>		
PT2626*	White, Ivory, Light Almond, Black	20

P&S PlugTail Sensors			
Catalog Number	Description	Voltage	Load
PTWSP250*	PIR Occupancy Sensor I, W, GRY, LA	120/277VAC; 60Hz	800W Max. at 120V, 1200W Max. at 277V



## P&S PlugTail™ Switches and Sensors



Connectors and Jumper		
Catalog Number	Description	Wire Colors
<b>P&amp;S PlugTail Switch Connectors for Switches and Sensors</b>		
PTS6STR3	3-wire, 6" Stranded THHN12	Green, Black, Black
PTS6STR3-277	3-wire, 6" Stranded THHN12 for 277V applications	Green, Brown, Brown
PTS6SOL3	3-wire, 6" Solid THHN12	Green, Black, Black
PTS6SOL3-277	3-wire, 6" Solid THHN12 for 277V applications	Green, Brown, Brown
PTS6STR4	4-wire, 6" Stranded THHN12	Green, Red, Red, Black
PTS6STR4-277	4-wire, 6" Stranded THHN12 for 277V applications	Green, Brown, Yellow, Yellow
PTS6SOL4	4-wire, 6" Solid THHN12	Green, Red, Red, Black
PTS6SOL4-277	4-wire, 6" Solid THHN12 for 277V applications	Green, Brown, Yellow, Yellow
<b>P&amp;S PlugTail Connectors for Switches and Sensors with WAGO Connectors</b>		
PTS6STR3BP	3-wire, 6" Stranded THHN12	Green, Black, Black
PTS6STR3-277BP	3-wire, 6" Stranded THHN12 for 277V applications	Green, Brown, Brown
PTS6SOL3BP	3-wire, 6" Solid THHN12	Green, Black, Black
PTS6SOL3-277BP	3-wire, 6" Solid THHN12 for 277V applications	Green, Brown, Brown
PTS6STR4BP	4-wire, 6" Stranded THHN12	Green, Red, Red, Black
PTS6STR4-277BP	4-wire, 6" Stranded THHN12 for 277V applications	Green, Brown, Yellow, Yellow
PTS6SOL4BP	4-wire, 6" Solid THHN12	Green, Red, Red, Black
PTS6SOL4-277BP	4-wire, 6" Solid THHN12 for 277V applications	Green, Brown, Yellow, Yellow
<b>P&amp;S PlugTail Jumper</b>		
PTJ	PlugTail Tail cover for rough in	
PTJ5	PlugTail Tail cover for rough in; 5-pack	

120/277VAC; 347VAC

## Mud Rings



Catalog Number	Description	Size
MRC1	Mud Ring Cover	1-Gang
MRC2		2-Gang

## P&S PlugTail Power™ Pre-Fabricated Wiring Systems



Catalog Number		Description
Single Gang Single Connector	Double Gang Two Connectors	
<b>Floor Bracket Wired Assemblies with Stranded Copper Pigtails</b>		
PSF1185825	PSF2185825	5/8" ring rise, 2-1/2" wall depth
PSF1185835	PSF2185835	5/8" ring rise, 3-1/2" wall depth
PSF1187525	PSF2187525	3/4" ring rise, 2-1/2" wall depth
PSF1187535	PSF2187535	3/4" ring rise, 3-1/2" wall depth
<b>Floor Bracket Wired Assemblies with Solid Copper Pigtails</b>		
PSFS1185825	PSFS2185825	5/8" ring rise, 2-1/2" wall depth
PSFS1185835	PSFS2185835	5/8" ring rise, 3-1/2" wall depth
PSFS1187525	PSFS2187525	3/4" ring rise, 2-1/2" wall depth
PSFS1187535	PSFS2187535	3/4" ring rise, 3-1/2" wall depth
<b>Wall Bracket Wired Assemblies with Stranded Copper Pigtails</b>		
PSW15825	PSW25825	5/8" ring rise, 2-1/2" wall depth
PSW15835	PSW25835	5/8" ring rise, 3-1/2" wall depth
PSW17525	PSW27525	3/4" ring rise, 2-1/2" wall depth
PSW17535	PSW27535	3/4" ring rise, 3-1/2" wall depth
<b>Wall Bracket Wired Assemblies with Solid Copper Pigtails</b>		
PSWS15825	PSWS25825	5/8" ring rise, 2-1/2" wall depth
PSWS15835	PSWS25835	5/8" ring rise, 3-1/2" wall depth
PSWS17525	PSWS27525	3/4" ring rise, 2-1/2" wall depth
PSWS17535	PSWS27535	3/4" ring rise, 3-1/2" wall depth

## Metal-Box Kit

Catalog Number		Description
Single Gang	Double Gang	
<b>Metal-Box Kits with Stranded Copper Pigtails</b>		
MB4S1PTSTR	MB4S2PTSTR	4 Sq. 1-1/2" Metal Box, 5/8 MR, PTR66STR
MBD4S1PTSTR	MBD4S2PTSTR	4 Sq. 2-1/8" Metal Box, 5/8 MR, PTR66STR
MB4S1SPTSTR	MB4S2SPTSTR	4 Sq. 1-1/2" Metal Box, 3/4 MR, PTR66STR
MBD4S1SPTSTR	MBD4S2SPTSTR	4 Sq. 2-1/8" Metal Box, 3/4 MR, PTR66STR
<b>Metal-Box Kits with Solid Copper Pigtails</b>		
MB4S1PTSOL	MB4S2PTSOL	4 Sq. 1-1/2" Metal Box, 5/8 MR, PTR66SOL
MBD4S1PTSOL	MBD4S2PTSOL	4 Sq. 2-1/8" Metal Box, 5/8 MR, PTR66SOL
MB4S1SPTSOL	MB4S2SPTSOL	4 Sq. 1-1/2" Metal Box, 3/4 MR, PTR66SOL
MBD4S1SPTSOL	MBD4S2SPTSOL	4 Sq. 2-1/8" Metal Box, 3/4 MR, PTR66SOL

**designed to be better.™**

For additional technical or application-specific information, call 800-223-4185 or visit our website at [www.legrand.us](http://www.legrand.us). We're eager to put our expertise to work for you.

**Distributed by:**



**Pass & Seymour**

P.O. Box 4822  
Syracuse, NY 13221-4822  
800-776-4035  
[www.legrand.us/PassandSeymour](http://www.legrand.us/PassandSeymour)

**Legrand Canada**  
570 Applewood Crescent  
Vaughan, ON, L4K 4B4  
Phone: 905.738.9195, Fax: 905.738.9721  
[www.legrand.ca](http://www.legrand.ca)