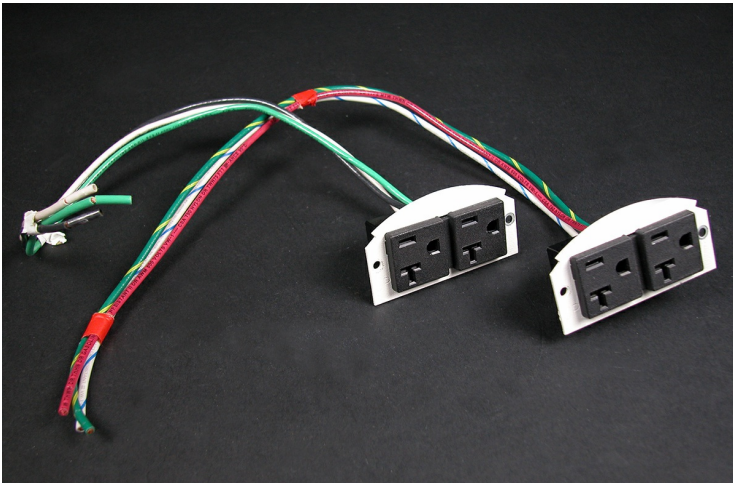




Wiremold
Evolution 6AT Series 20A Duplex Receptacles
Part No. 68REC-25



Two (2) proprietary 20A duplex power receptacles with mounting plates and 25' leads. Designed to fit in either of the two side compartments in both the 6ATC and the 8ATC Series Poke-Thru Devices. Receptacle can be wired as a standard or isolated ground device.

Features & Benefits

Two (2) proprietary 20A duplex power receptacles with mounting plates and 25' leads. Designed to fit in either of the two side compartments in both the 6ATC and the 8ATC Series Poke-Thru Devices. Receptacle can be wired as a standard or isolated ground device.

Specifications

General Info

Product Line	Wiremold	UPC Number	786776151107
Country Of Origin	United States	Construction	Not Assembled
Application Sector	Commercial	Standard	cULus Listed Metallic Outlet Boxes: File E2961 Guide QCIT. cULus Listed Nonmetallic Outlet Boxes & Fittings Classified for Fire Resistance: File R8209 Guide CEYY. Meets Article 300.21 & 300.22(C) & 314 of NEC.
Type	Poke-Thru		

Listing Agencies / 3rd Party Agencies

cULus ListingNumber	E2961	cULus Listed	Yes
---------------------	-------	--------------	-----

Additional Information

RoHS Conformant

Yes

Product Environmental Profile Yes

Technical Information

Number of Outlets

2