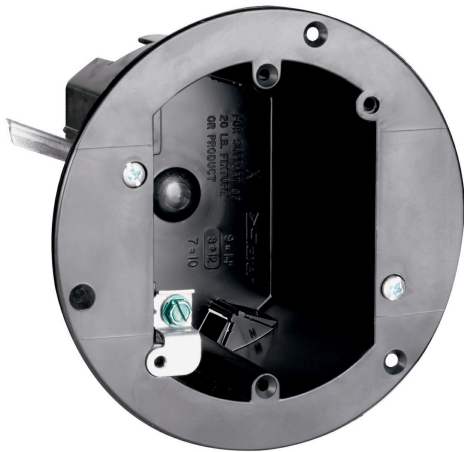




Pass and Seymour
3.75-in Round Old Work Box
Part No. C118WGAC



Round Old Work Box with Swing brackets for mounting that adjust from 1 1/4 to 1/8. Four Auto/Clamps and Grounding Lug. Includes device mounting holes. 50 pack

Features & Benefits

Box designed so mounting strap of the device, with plaster ears removed, fits flush, allowing use of standard depth wall plate without unsightly gap between plate and wall surface.

New longer swing brackets have greater reach to clamp onto oversize cutouts.

Combination slotted/Phillips head swing bracket screws.

Suitable for in-wall use.

Includes device mounting holes.

Swing out wing brackets permit installation of box in wall with 1 1/4 inch thick wallboard down to 1/8 inch thick paneling.

Made of high impact thermoplastic.

Include exclusive Auto/Clamp feature.

Suitable for in-ceiling use for supporting weights up to up to 6 lbs..

For covering patents, see www.legrand.us/patents.

Specifications

General Info

Product Line	Pass & Seymour	Color	Black
Country Of Origin	United States	Application Sector	Residential/Commercial
Standard	UL listed		

Dimensions

Cubic Capacity	18 cu in
----------------	----------

Additional Information

Product Environmental Profile	Yes
-------------------------------	-----

Technical Information

Number of Outlets	1
-------------------	---
