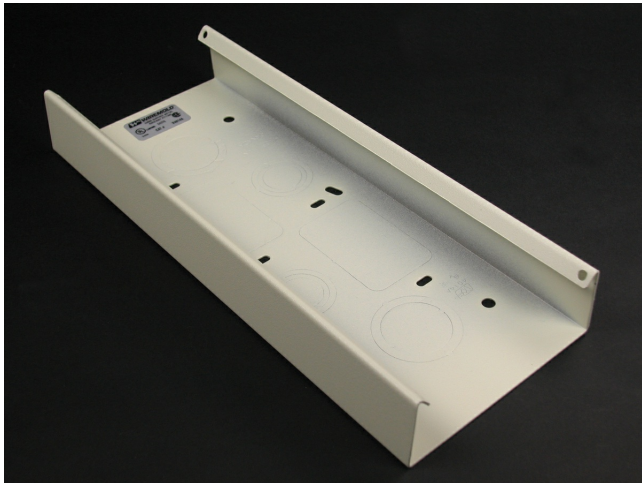




Wiremold
4000 Wall Box Connector Fitting
Part No. G4014A



Base has two concentric 1", 3/4", and 1/2" trade size KOs, two concentric 1 1/4", and 1" Kos (undivided only), and two rectangular 2 9/16" x 1 11/16" KOs.

Features & Benefits

Base has two concentric 1", 3/4", and 1/2" trade size KOs, two concentric 1 1/4", and 1" Kos (undivided only), and two rectangular 2 9/16" x 1 11/16" KOs.

Specifications

General Info

Product Line	Wiremold	UPC Number	786776088892
Country Of Origin	United States	Application Sector	Residential/Commercial
Standard	cULus Listed Raceway: File E4376 Guide RJBT. Fittings: File E41751 Guide RJPR. Base & Blank Cover: Meets Article 386 of NEC. Meets Section 12-600 of CEC.	Type	Raceway

Dimensions

Product Length US	12.0 in
-------------------	---------

Listing Agencies / 3rd Party Agencies

cULus ListingNumber	E41751	cULus Listed	Yes
---------------------	--------	--------------	-----

Buy American Act Compliance

NAFTA	Yes
-------	-----

Additional Information

RoHS Conformant	Yes	Product Environmental Profile	Yes
-----------------	-----	-------------------------------	-----

Technical Information

Voltage	600.0 V
---------	---------
