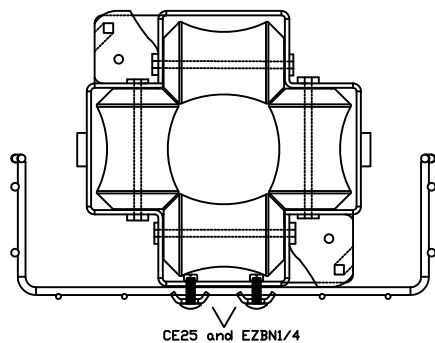
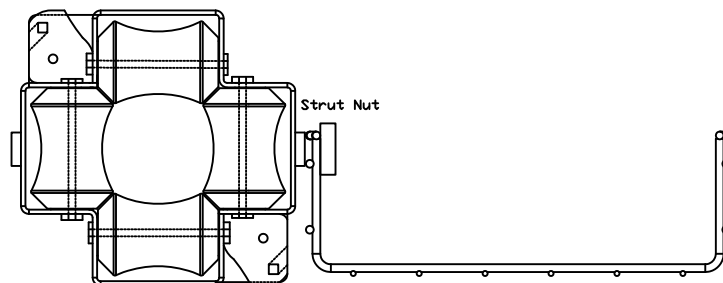


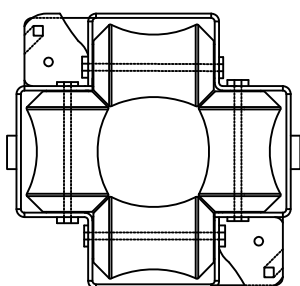
HEAVY DUTY FAS ROLLER



Mounted in Tray



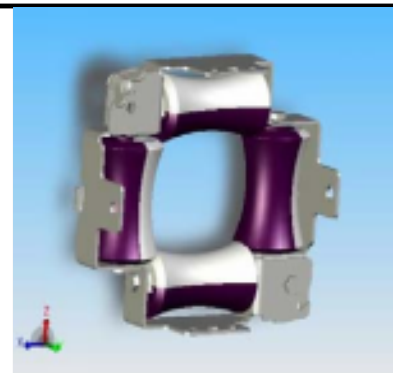
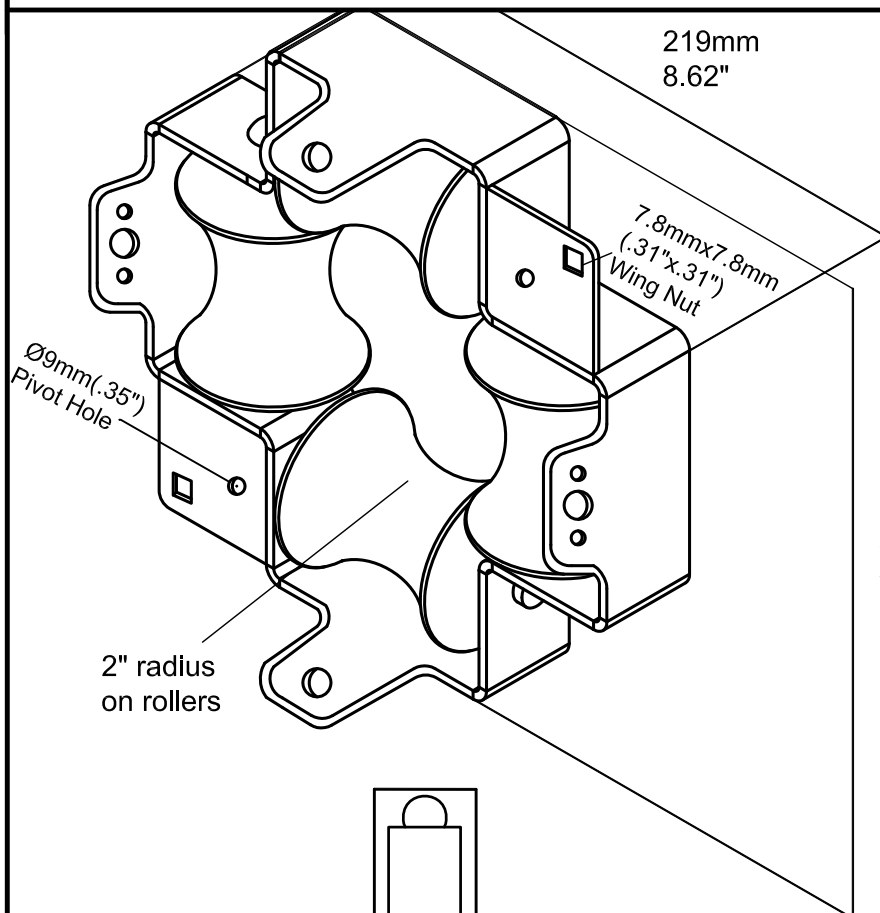
Mounted to side of tray



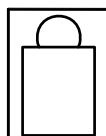
FRONT



OPEN



219mm
8.62"



lb

Heavy Duty FAS ROLLER

3.2

- Heavy Duty 11 gauge steel construction
- Nylon insert locknut hardware
- Universal mounting system
- For cable(or cable bundles) up to 3" in diameter