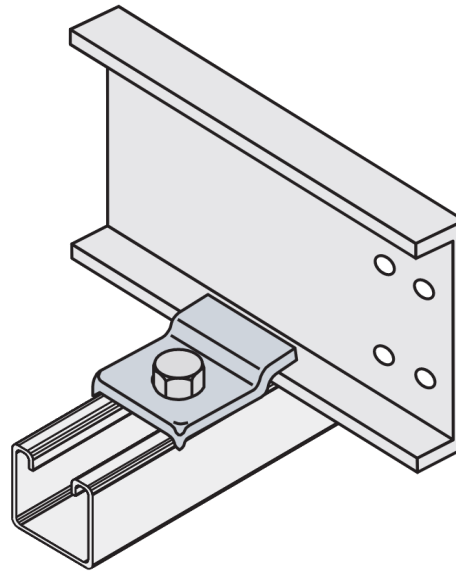
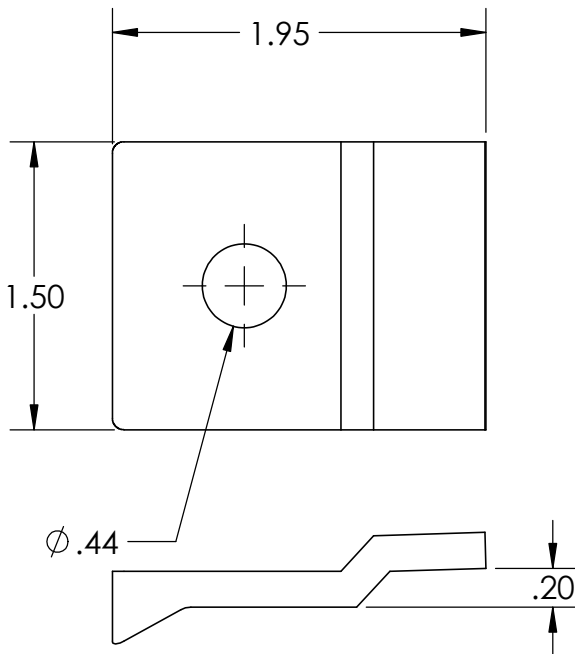




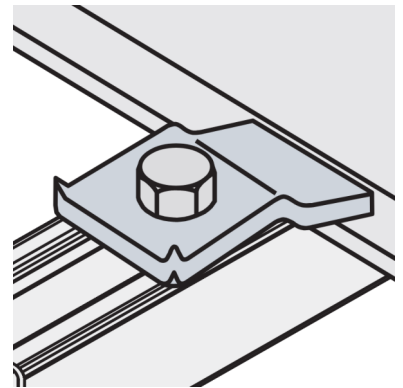
# PW Ladder Cable Tray Clamp

## 1893 Series

## Hold Down/Expansion Clamp



Used as Expansion Guide



Used as Hold Down

Product Number	Hold Down Clamp	3/8" x 1-1/2" Hex Head Bolt	3/8" Flanged Hex Nut	3/8" Channel Nut
1893-01	✓	✓	✓	
1893-02	✓			
1893-03	✓	✓		✓

PRODUCT NUMBER	FASTENER OPTIONS
1893-01*	ZN S6
1893-02	NONE
1893-03†	ZN S6
CATALOG NUMBERING EXAMPLE:	
Material	Fasteners
A - 1893-03	- ZN
A - 1893-02	

Material: Aluminum      Finish: None  
Carbon Steel      Zinc Plated  
316 Stainless Steel      None

Fastener Option: Stainless Steel (S6)  
Zinc Plated Steel (ZN)

Works as an expansion guide and flips over for use as a hold down clamp for use with all ladder trays. Sold in packs of 10.

"Copyright LNA, Inc. Drawings are proprietary and may not be copied or otherwise duplicated or used without express written permission."

CABCS1173

Legrand  
8319 State Rt. 4  
Mascoutah, IL 62258 USA  
800-658-4641  
618-566-3250  
Fax 618-566-4978  
[www.legrand.us/cablofil](http://www.legrand.us/cablofil)