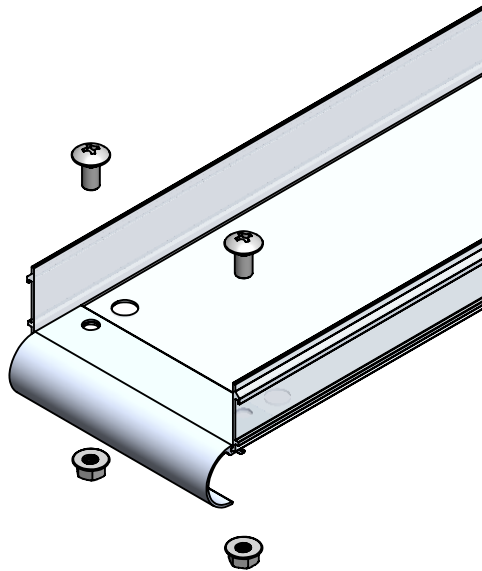




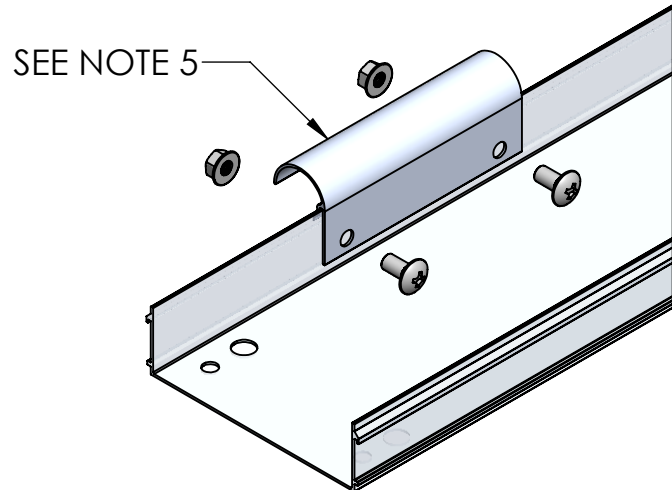
CHANNEL SYSTEM Channel Tray

CCxxDO-xx

Cable Channel Dropout



CC6ADO SHOWN BOLTED ON END



CC6ADO SHOWN AS SIDE DROPOUT

PART NAME	'W'
CC4*DO-x	4.000
CC6*DO-x	6.000

* REPRESENTS MATERIAL/FINISH:
A- ALUMINUM

x REPRESENTS HARDWARE: GE or S6

NOTES:

1. TORQUE: 19 FT/LBS (BOLTS/NUTS)
2. KIT INCLUDES ONE DROPOUT AND ALL NECESSARY HARDWARE TO COMPLETE THE CONNECTION
3. MEETS BONDING REQUIREMENTS (NO BONDING JUMPERS REQUIRED)
4. MOUNT ON TOP SIDE OF CABLE CHANNEL
5. WHEN USED AS SIDE DROPOUT, LINE DRILL $\phi .406$ " HOLES

"Copyright LNA, Inc. Drawings are proprietary and may not be copied or otherwise duplicated or used without express written permission."

CABCS0568



Legrand
8319 State Rt. 4
Mascoutah, IL 62258 USA
800-658-4641
618-566-3250
Fax 618-566-4978
www.legrand.us/cablofil