

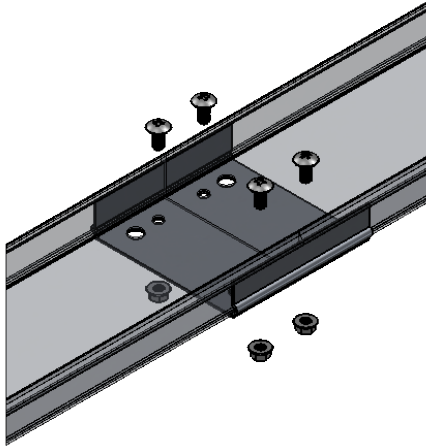


CHANNEL SYSTEM

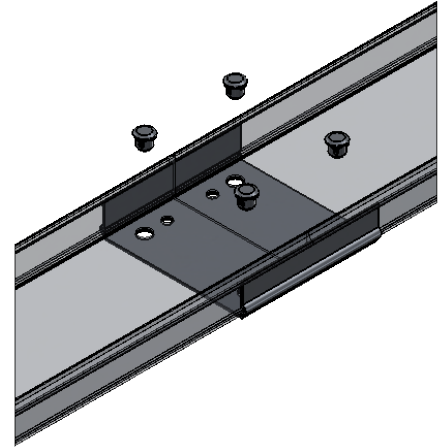
Channel Tray

CCxASSP-xx

Aluminum Standard Splice Plate



CC6ASSP SHOWN WITH BOLTS/NUTS



CC6ASSP SHOWN WITH PUSH-PINS

NOTES:

- BOLT/NUT TORQUE: 19 FT/LBS
- PUSH-PIN INSTALLATION: INSERT AS SHOWN IN RH IMAGE, PUSH DOWN UNTIL BOTH PIN PLUNGERS EXTRUDE OUTWARD PAST HOLE (on bottom side of splice plate)
- KIT INCLUDES ONE SPLICE PLATE AND ALL NECESSARY HARDWARE TO COMPLETE SPLICE CONNECTION
- BOLTED SPLICE MEETS BONDING REQUIREMENTS (NO BONDING JUMPERS REQUIRED)
- PUSH-PIN SPLICE REQUIRES ONE 2/0 (or TWO #2) BONDING JUMPERS (not shown) WHEN SYSTEM IS USED AS AN EGC.
- MOUNT ON BOTTOM SIDE OF CABLE CHANNEL

PART NAME	'WIDTH'
CC4ASSP-xx	4.000
CC6ASSP-xx	6.000

MATERIAL: A- ALUMINUM

'xx' REPRESENTS HARDWARE: GE, S6 or PP (PUSH PIN)



31TS

"Copyright LNA, Inc. Drawings are proprietary and may not be copied or otherwise duplicated or used without express written permission."

CABCS0562

Legrand
8319 State Rt. 4
Mascoutah, IL 62258 USA
800-658-4641
618-566-3250
Fax 618-566-4978
www.legrand.us/cablofil