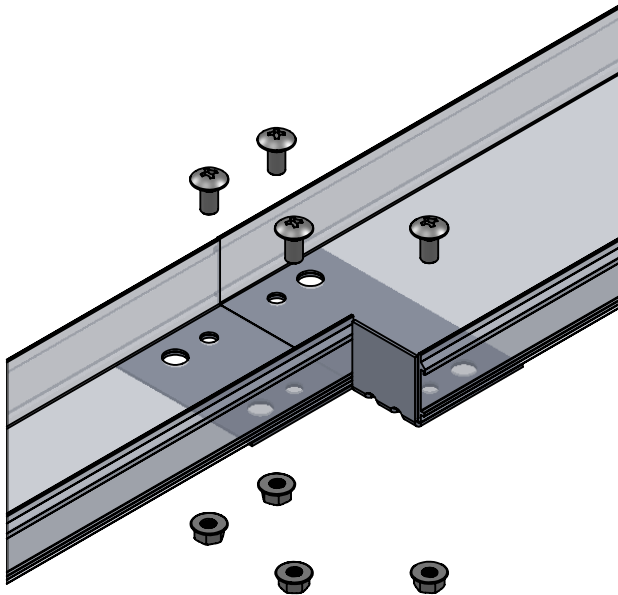




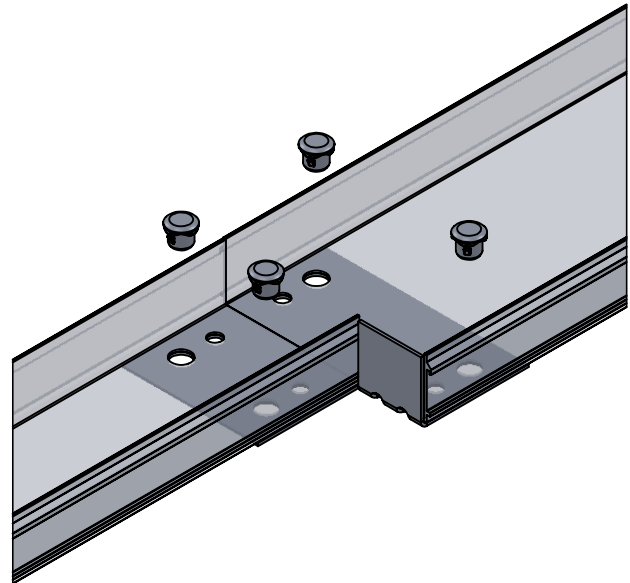
# CHANNEL SYSTEM Channel Tray

**CC46xRSP-xx**

## Cable Channel Reducer Plate



**CC46ARSP SHOWN WITH BOLTS/NUTS**



**CC46ARSP SHOWN WITH PUSH-PINS**

PART NAME
CC46*RSP-x

\* REPRESENTS MATERIAL/FINISH:

A- ALUMINUM

G -STEEL/HDGAF (after fab)

T - STAINLESS/316

x REPRESENTS HARDWARE:

GE, S6 or PP (PUSH PIN)

**NOTES:**

- TORQUE: 19 FT/LBS (BOLTS/NUTS)
- KIT INCLUDES ONE REDUCER PLATE AND ALL NECESSARY HARDWARE TO COMPLETE THE CONNECTION
- MEETS BONDING REQUIREMENTS (NO BONDING JUMPERS REQUIRED)
- MOUNT ON BOTTOM SIDE OF CABLE CHANNEL

"Copyright LNA, Inc. Drawings are proprietary and may not be copied or otherwise duplicated or used without express written permission."

CABCS0570



Legrand  
8319 State Rt. 4  
Mascoutah, IL 62258 USA  
800-658-4641  
618-566-3250  
Fax 618-566-4978  
[www.legrand.us/cablofil](http://www.legrand.us/cablofil)