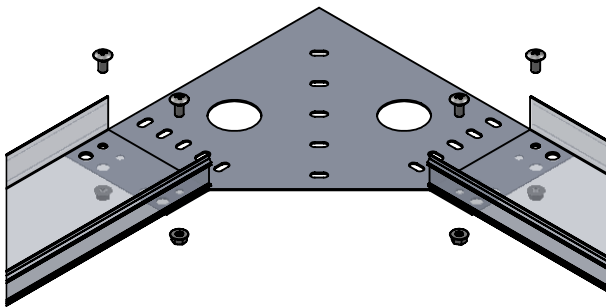




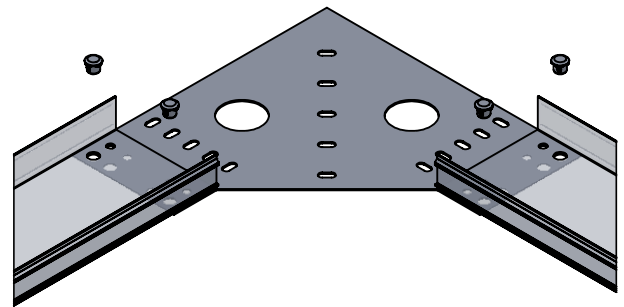
CHANNEL SYSTEM Channel Tray

CCVxH90C-xx

Horizontal 90° Connector



CCVAH90C SHOWN WITH BOLTS/NUTS



CCVAH90C SHOWN WITH PUSH-PINS

PART NAME
CCV*H90C-x

* REPRESENTS MATERIAL/FINISH:

A- ALUMINUM

G -STEEL/HDGAF (after fab)

T - STAINLESS/316

x REPRESENTS HARDWARE:

GE, S6 or PP (PUSH PIN)

NOTES:

- TORQUE: 19 FT/LBS (BOLTS/NUTS)
- KIT INCLUDES ONE CONNECTOR AND ALL NECESSARY HARDWARE TO COMPLETE SPLICE CONNECTION
- MEETS BONDING REQUIREMENTS (NO BONDING JUMPERS REQUIRED)
- MOUNT ON BOTTOM SIDE OF CABLE CHANNEL

"Copyright LNA, Inc. Drawings are proprietary and may not be copied or otherwise duplicated or used without express written permission."

CABCS0593



Legrand
8319 State Rt. 4
Mascoutah, IL 62258 USA
800-658-4641
618-566-3250
Fax 618-566-4978
www.legrand.us/cablofil