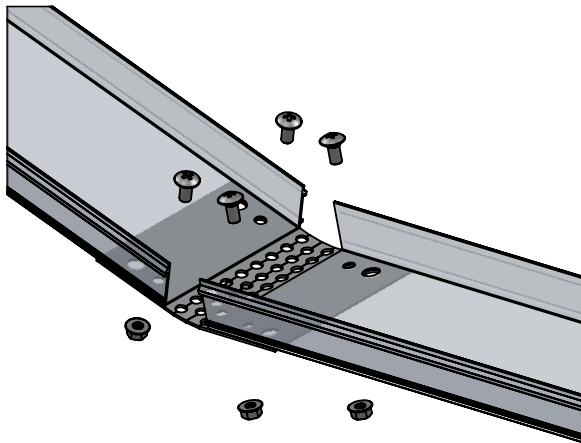




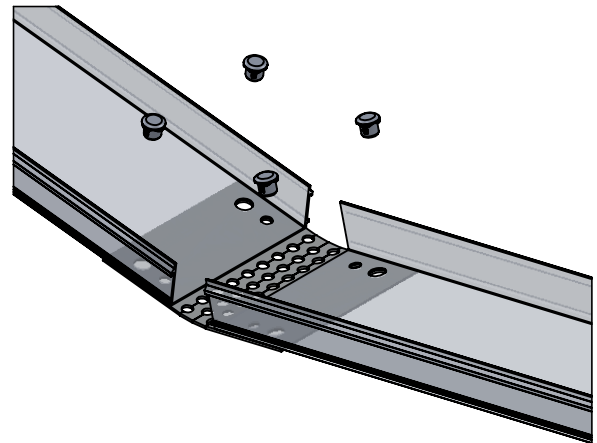
CHANNEL SYSTEM Channel Tray

CCxVASP-xx

Vertical Adjustable Splice Kit



HARDWARES : BOLT & HEX NUT



HARDWARES : PUSH PIN

PART NAME	'W'
CC4*VASP-x	4.000
CC6*VASP-x	6.000

* REPRESENTS MATERIAL/FINISH:
A- ALUMINUM
G -STEEL/HDGAF (after fab)
T - STAINLESS/316

x REPRESENTS HARDWARE:
GE, S6 or PP (PUSH PIN)

NOTES:

- BEND PLATE TO APPROPRIATE ANGLE AS NEEDED
- TORQUE: 19 FT/LBS (BOLTS/NUTS)
- KIT INCLUDES ONE SPLICE PLATE AND ALL NECESSARY HARDWARE TO COMPLETE SPLICE CONNECTION
- MEETS BONDING REQUIREMENTS (NO BONDING JUMPERS REQUIRED)
- MOUNT ON BOTTOM SIDE OF CABLE CHANNEL

"Copyright LNA, Inc. Drawings are proprietary and may not be copied or otherwise duplicated or used without express written permission."

CABCS0564



Legrand
8319 State Rt. 4
Mascoutah, IL 62258 USA
800-658-4641
618-566-3250
Fax 618-566-4978
www.legrand.us/cablofil