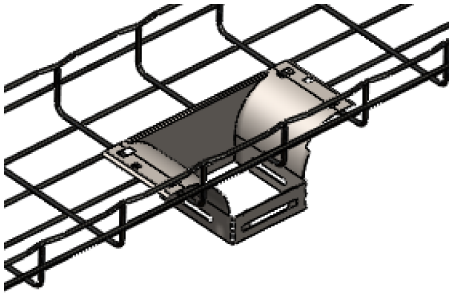




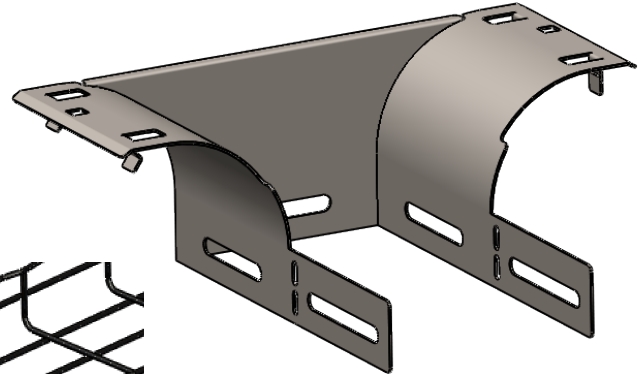
# CABLOFIL WIRE MESH ACCESSORY

## Fits 150mm widths and wider CDO100KITxx CENTER DROPOUT KIT

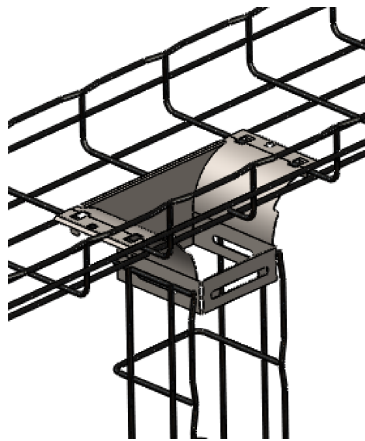
'xx' REPRESENTS FINISH



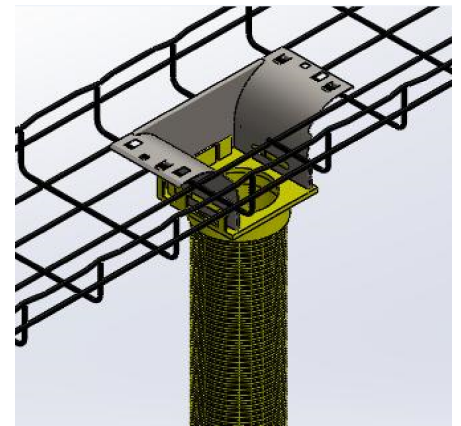
CDO100 shown on CF54/150  
with fingers overlapped



CDO100



CDO100 shown on CF54/150 with  
CF105/100 vertically



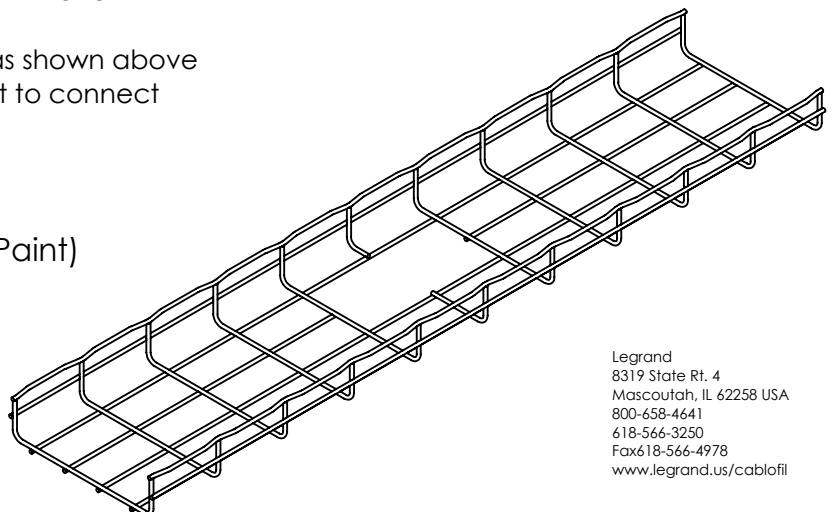
CDO100 shown on CF54/150 with  
Ortronics vertical tube

- Can be installed before or after cables are installed in wire mesh
- 'Snap' into place (after removing wires as shown below), follow up by either:
  - Bend two straight tabs around mating wire or
  - Secure with two EZBN14 & CE25's (supplied in kit) for bonding to tray
  - Add additional support if necessary
- Bend fingers (overlap) to close dropout, secure with one EZBN14 (supplied)
- Can attach CF54/100 (or CF100/100) vertically as shown above
- Bend flanges 180° backwards (as shown on right to connect Ortronics endcap & tube)

Material: Carbon Steel  
Finish: EZ (Electrozinc), BL (Black), PE (Special Paint)  
Fits Width: 150mm and wider  
Radius: 2"  
Length: 9" (overall)

"Copyright LNA, Inc. Drawings are proprietary and may not be copied or otherwise duplicated or used without express written permission."

CABCS0548



Legrand  
8319 State Rt. 4  
Mascoutah, IL 62258 USA  
800-658-4641  
618-566-3250  
Fax 618-566-4978  
[www.legrand.us/cablofil](http://www.legrand.us/cablofil)