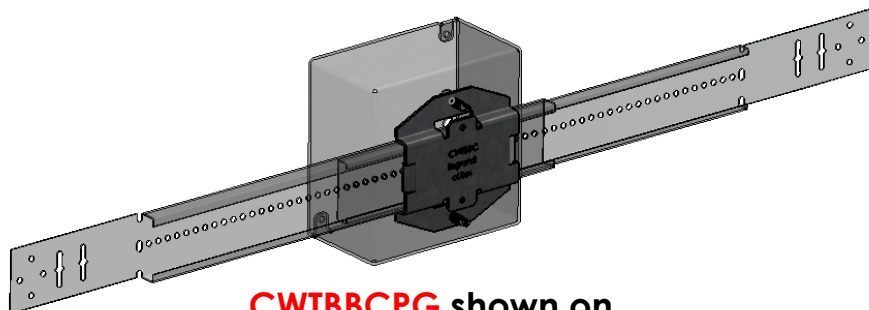




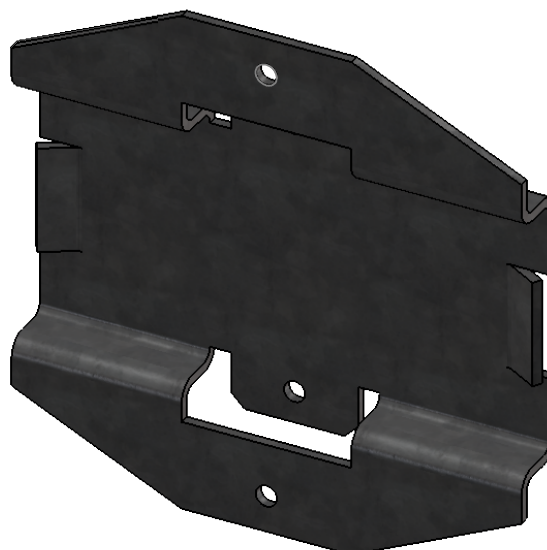
FASTENERS  
FASPower

## CWTBBC Wall Telescoping Box Bracket Clip

PATENT PENDING



**CWTBBCPG** shown on  
CWTBB16 with 4" square box  
(telescoping bracket and  
box sold separately)



### Features:

- Easy to install
- Electrical box can be located at any location on the wall bracket by simply sliding to proper location and tightening two self-drilling/threading screws (supplied)
- Can be pre-assembled to reduce on-site installation cost even further
- Fit almost all electrical boxes
- PG (Pre-galv) finish standard
- Requires no special attachment hardware or tools

**Material: Steel**

**Finish: Pre-galv**

"Copyright LNA, Inc. Drawings are proprietary and may not be copied or otherwise duplicated or used without express written permission."

CABCS0904

Legrand  
8319 State Rt. 4  
Mascoutah, IL 62258 USA  
800-658-4641  
618-566-3250  
Fax 618-566-4978  
[www.legrand.us/cablofil](http://www.legrand.us/cablofil)