

SNAP & GO J-HOOK ON WIRE MESH TRAY

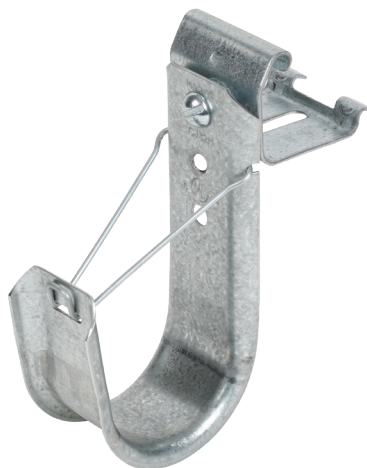
FASTEST J-HOOK INSTALLATION IN THE MARKET.

'Snap-on' CJHCAT40 series provides all the features listed for our CJH Series J-hook line, including:

- Ready to use out-of-the-box, simply hang on lowest side wire, rotate downward, and 'snap' it on the tray
- Pre-assembled to reduce on-site installation cost
- Fits all depths/widths wire mesh trays
- EZ finish standard
- Safe Working Load: 25 lbs
- Requires no special attachment hardware or tools
- Not recommended on center-hung style systems
- Wire cable retainer is 50% easier to install and use
- Fits most wire mesh trays with a 2" x 4" grid
- BICSI minimum installation spacing - 5'

USED FOR COMMUNICATION OR POWER CABLES

PART NUMBER	J-HOOK SIZE	QUANTITY
CJ12HCAT40EZ	3/4"	10
CJ21HCAT40EZ	1-5/16"	10
CJ32HCAT40EZ	2"	10



Electrical Wiring Systems

60 Woodlawn Street
West Hartford, CT 06110
1.877.BY.LEGRAND (295.3472)
www.legrand.us

Canada
1.800.723.5175; 905.738.9195
www.legrand.ca

Costa Rica
+506.298.56.04; +506.239.71.13
www.legrand.cr

FOLLOW US

