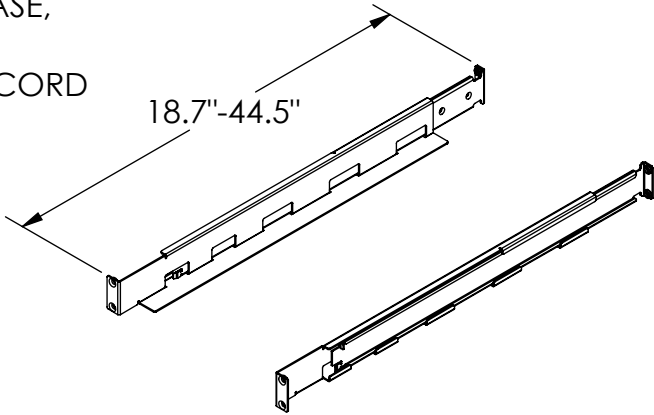


ELECTRICAL PARAMETERS:

- LINE INTERACTIVE, SINGLE PHASE, 120V, 2.0kVA, 1.8kW
- INPUT TYPE: NEMA 5-20P, 6.0' CORD
- OUTPUT TYPE: (8) NEMA 5-20R
- DISCHARGE TIME:
 - 100% LOAD 3.7 min.
 - 75% LOAD 6.3 min.
 - 50% LOAD 12.0 min.
 - 25% LOAD 29.2 min.

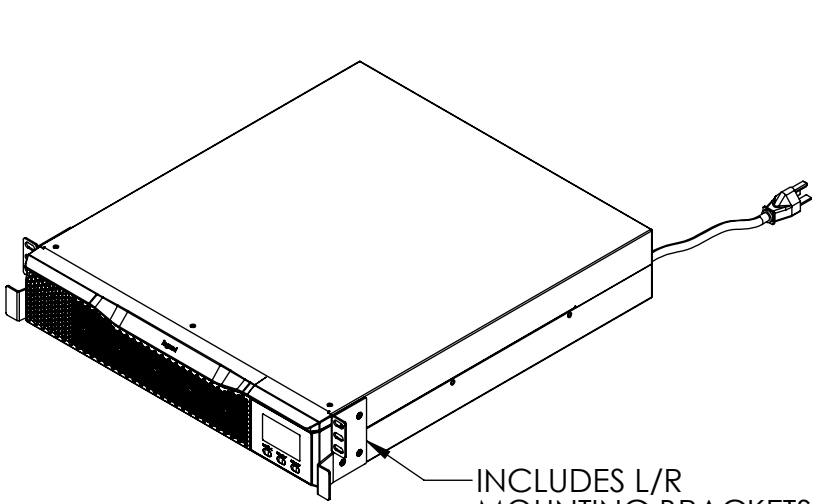
MECHANICAL PARAMETERS:

- WEIGHT 53.0 lbs.
- COLOR BLACK

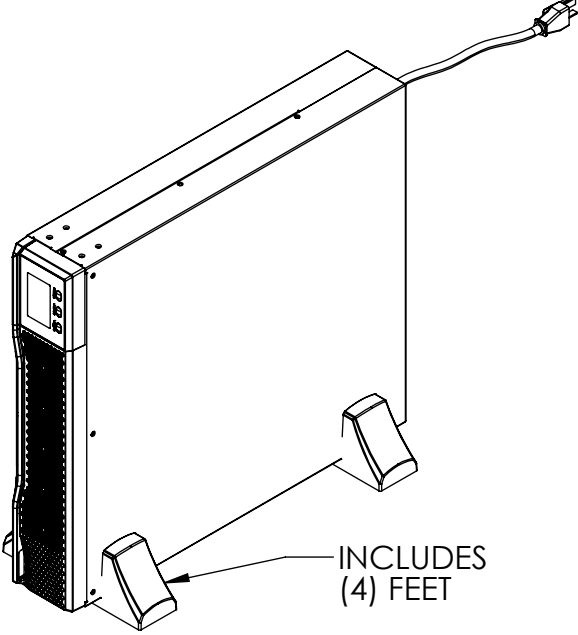


LU-4PKIT-2U 4POST RAIL KIT, 2U

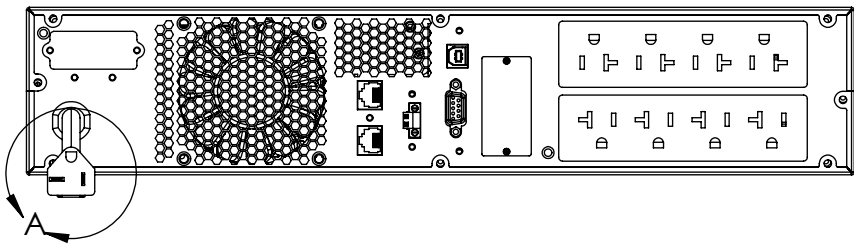
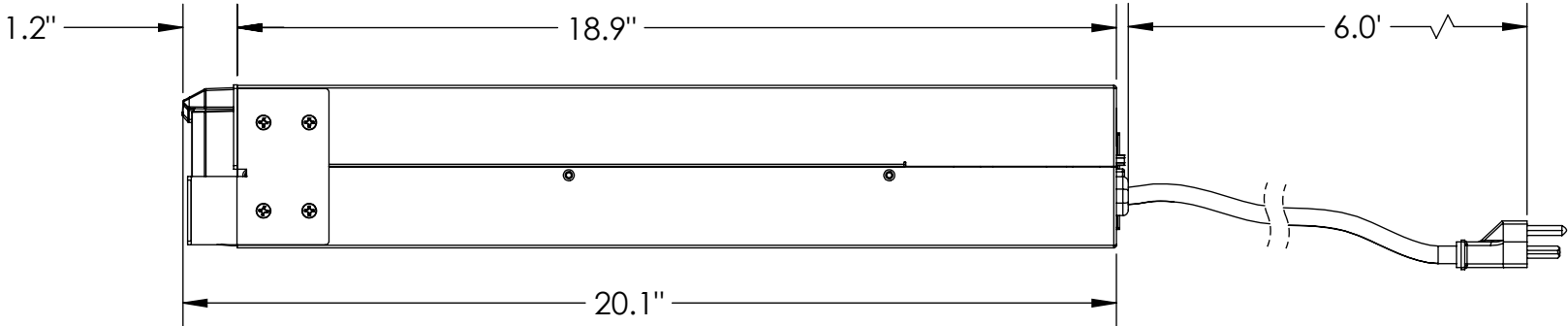
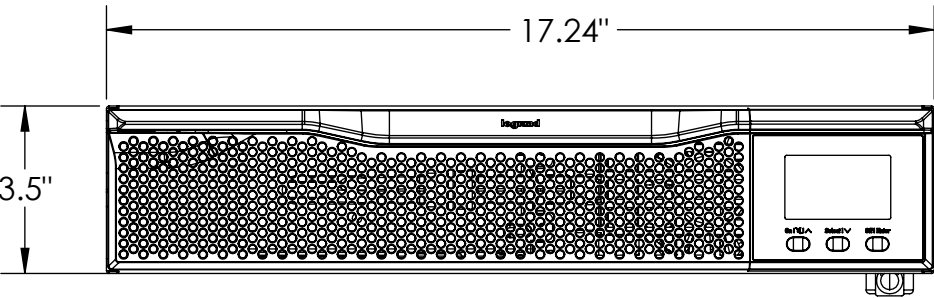
- (12) M6 RACK SCREWS
- (6) M6 CAGE NUTS



RACK MOUNT CONFIGURATION

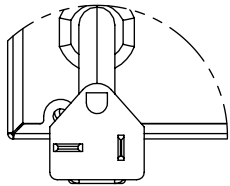


TOWER CONFIGURATION




ALSO INCLUDED:

- (1)USB CABLE 5.0'
- (1)MANUAL



DETAIL A
NEMA 5-20P
SCALE 1 : 2

*** NOTICE *** THIS DOCUMENT CONTAINS CONFIDENTIAL AND/OR PROPRIETARY INFORMATION INTENDED FOR USE ONLY BY THE INDIVIDUAL(S) PROVIDED. NEITHER THIS DOCUMENT, NOR ANY INFORMATION CONTAINED HEREIN, MAY BE COPIED, DISTRIBUTED, DISCLOSED TO ANY THIRD PARTY OR USED IN ANY MANNER OTHER THAN FOR WHICH IT HAS BEEN PROVIDED, WITHOUT THE PRIOR WRITTEN CONSENT OF LEGRAND			SIZE B	CAD FILE LU2000RTL	DWG NO LU-2000-RTL	REV 00
DWN	MM	3/6/2019	SCALE	1:4	SHEET	1 OF 1
CHK	RJG	3/7/2019				
APPR						



WWW.LEGRAND.US

TITLE
LEGRAND UPS LINE INTERACTIVE 2000VA, 120V,
50-60HZ

SIZE B	CAD FILE LU2000RTL	DWG NO LU-2000-RTL	REV 00
SCALE 1:4		SHEET 1 OF 1	