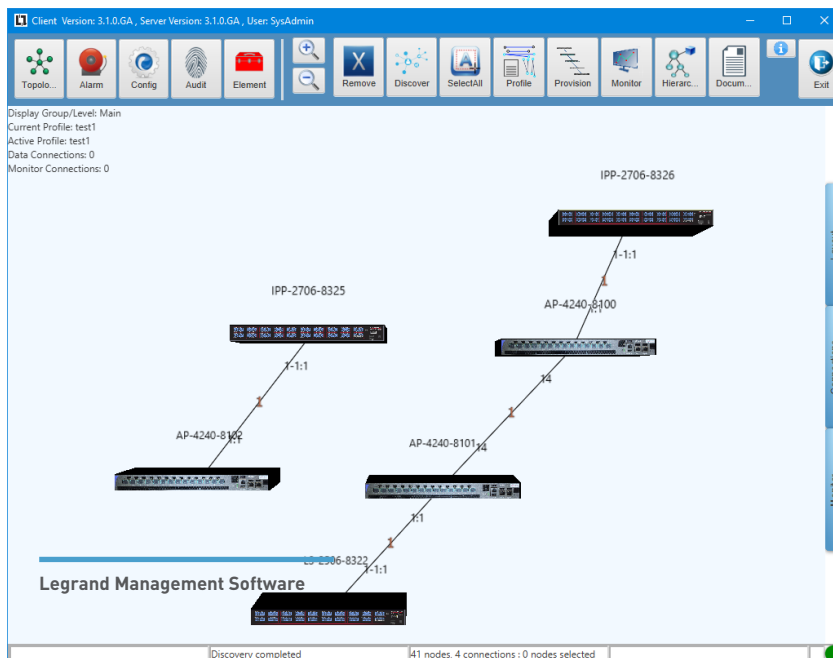


INTELLIGENT CROSS CONNECT

FMXP SERIES

PRODUCT DESCRIPTION

The Intellicore ICCs - FMXP series from Legrand®, provide layer 1 connectivity for Ethernet Networks. The FMXP series of intelligent cross connect systems offer SFP+ or QSFP+ cages for hot-swappable transceiver plug-ins. Layer 1 connections for Ethernet networks can be provisioned dynamically from the IMS. With essentially no packet processing required, this series provides optimum switching latency performance.



FMXP SERIES | APPLICATIONS

- Network tapping for monitoring and signal replication for broadcasting
- Dynamic physical layer remote managed moves, adds and changes (MACs) for “lights-out” operating environments
- Colocation data center applications for remote network activation and subscriber enablement
- Media conversion with cross-connect capability between different optical wavelengths
- Conversion of single mode to multimode fiber plants
- Environments with multi-media installations of fiber and copper cabling
- Laboratory automation, with application software to support schedule reconfigurations
- Built-in optical signal regeneration allows the FMXP series ICC to also be used as a repeater

INTELLIGENT CROSS CONNECT FEATURES | FMXP SERIES

- Low cost software-managed Layer 1 switch with a fully non-blocking switching fabric
- Intellicore Management Software (IMS) provides SDN-wide port provisioning, tapping, monitoring, documentation and asset management support
- Front cages accept hot-swappable SFP+ and QSFP+ transceivers
- Dual hot-swappable, load sharing redundant power supplies are standard equipment
- Front-to-back or back-to-front hot swappable fan modules available for hot or cold aisle airflow requirements
- All data ports are located on the front panel faceplate
- Fans and power supplies are mounted on rear panel faceplate

POINT TO MULTIPOINT FUNCTIONALITY

In conjunction with the Intellicore Management Software (IMS), the FMXP series of the ICCs also provide point-to-multipoint connection functionality, which is ideal for network tapping and broadcasting. This feature enables applications that require data received at a particular port to be replicated one or more times and sent to specified multiple unique output ports. The IMS provides advanced provisioning for monitoring connections to assist with complex tapping configurations in networked environments.

INTELLIGENT CROSS CONNECT

FMXP SERIES

LAYER-1 SOFTWARE MANAGED SWITCHING

The IMS provides network-wide visibility, including discovery of network attached products in the FMXP series. Applications are designed to take advantage of the total network view, so tasks, such as provisioning end-to-end connectivity, are easily performed via point & click workflows. The IMS also provides documentation management with port labeling, reservation, asset management and more. Security is improved with audit trails providing historical records of changes to device configuration, changes to data and monitoring connections, IMS manager updates, and database backups and restoral activity. A graphical rendering of the Layer-1 topology provides a network-wide view of the physical layer. An enhanced feature, such as a path finder, for example, graphically draws the connection path on the IMS GUI from a selected port to the associated destination port.

FEATURES	FMXP48SP02	FMXP48QS03
Layer-1 Switch Ports	48 x SFP+ for 10GbE ports 4 x QSFP+ for future applications	72 total 10GbE ports: 40 x SFP+ for 10GbE ports 8 x QSFP+ for an additional 32 x 10GbE ports
Management Ports	1 x RJ-45 serial console 1 x RJ-45 100/1000Base-T management	1 x RJ-45 serial console 1 x RJ-45 100/1000Base-T management
Power	2 Redundant, load-sharing, hot swappable AC Power Supplies Input Voltage: 100-240 VAC at 50-60 Hz Power Draw: 230W	2 Redundant, load-sharing, hot swappable AC Power Supplies Input Voltage: 100-240 VAC at 50-60 Hz Power Draw: 460W
Dimensions	438.15 x 476.25 x 44.45 mm (17.25 x 18.75 x 1.75 inches)	439.4 x 406.4 x 43.94 mm (17.3 x 16.00 x 1.73 inches)
Weight	7.68kg (16.94 pounds)	8kg (17.63 pounds)
Operating Temperature	10°C, to 50°C, (50°F to 122°F)	0°C, to 45°C, (32°F to 116°F)
Operating Humidity	80% maximum relative humidity	95% maximum relative humidity
Regulatory and Certifications	Emissions: FCC, CE, VCCI, CCC, KCC, BSMI Safety: UL, CE RoHS: Yes	Emissions: FCC, CE, VCCI, CCC, KCC, BSMI Safety: UL, CE RoHS: Yes

INTELLIGENT CROSS CONNECT

FMXP SERIES

FEATURES	FMXP320P04	FMXP320P05
Layer-1 Switch Ports	24 x QSFP+ for 96 x 10 GbE ports 8 x QSFP+ for future applications	32 x QSFP+ for 32 x 40GbE ports
Management Ports	1 x RJ-45 serial console 1 x RJ-45 100/1000Base-T management	1 x RJ-45 serial console 1 x RJ-45 100/1000Base-T management
Power	2 Redundant, load-sharing, hot swappable AC Power Supplies Input Voltage: 100-240 VAC at 50-60 Hz Power Draw: 460W	2 Redundant, load-sharing, hot swappable AC Power Supplies Input Voltage: 100-240 VAC at 50-60 Hz Power Draw: 460W
Dimensions	439.4 x 406.4 x 43.94 mm (17.3 x 16.00 x 1.73 inches)	439.4 x 406.4 x 43.94 mm (17.3 x 16.00 x 1.73 inches)
Weight	8kg (17.63 pounds)	8kg (17.63 pounds)
Operating Temperature	0°C, to 45°C, (32°F to 116°F)	0°C, to 45°C, (32°F to 116°F)
Operating Humidity	95% maximum relative humidity	95% maximum relative humidity
Regulatory and Certifications	Emissions: FCC, CE, VCCI, CCC, KCC, BSMI Safety: UL, CE RoHS: Yes	Emissions: FCC, CE, VCCI, CCC, KCC, BSMI Safety: UL, CE RoHS: Yes

FEATURES	FMXP320Q06	FMXP320Q07
Layer-1 Switch Ports	128x25G ports on 32 QSFP28 pluggable cages	32x100G QSFP28 pluggable cages
Management Ports	1 x RJ-45 serial console 1 x RJ-45 100/1000Base-T management	1 x RJ-45 serial console 1 x RJ-45 100/1000Base-T management
Power	2 Redundant, load-sharing, hot swappable AC Power Supplies. Input Voltage: 100-240 VAC at 50-60 Hz Power Draw: 350W without pluggable transceivers installed	2 Redundant, load-sharing, hot swappable AC Power Supplies Input Voltage: 100-240 VAC at 50-60 Hz Power Draw: 350W without pluggable transceivers installed
Dimensions	438 x 515 x 43.5 mm (17.3 x 20.3 x 1.7 inches)	438 x 515 x 43.5 mm (17.3 x 20.3 x 1.7 inches)
Weight	10kg (23 pounds)	10kg (23 pounds)
Operating Temperature	0°C, to 45°C, (32°F to 116°F)	0°C, to 45°C, (32°F to 116°F)
Operating Humidity	95% maximum relative humidity	95% maximum relative humidity
Regulatory and Certifications	Emissions: FCC, CE, VCCI, CCC, KCC, BSMI Safety: UL, CE RoHS: Yes	Emissions: FCC, CE, VCCI, CCC, KCC, BSMI Safety: UL, CE RoHS: Yes