

# INTELLIGENT PATCHING SYSTEM (IPS)

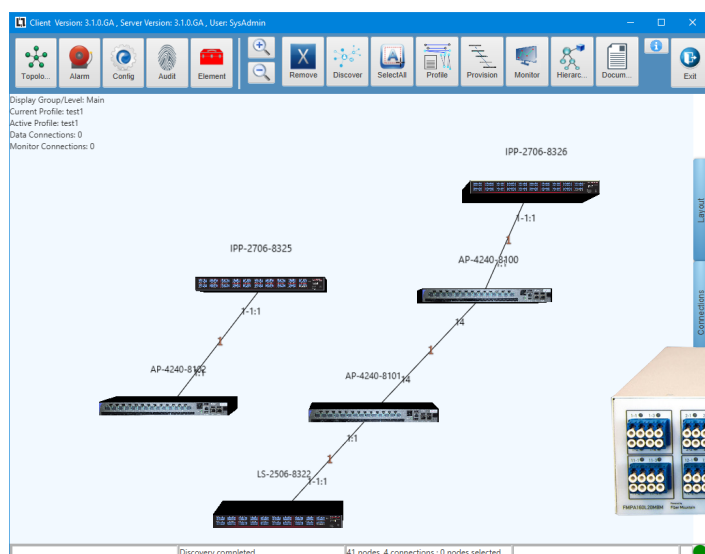
## FMPA SERIES

### PRODUCT DESCRIPTION

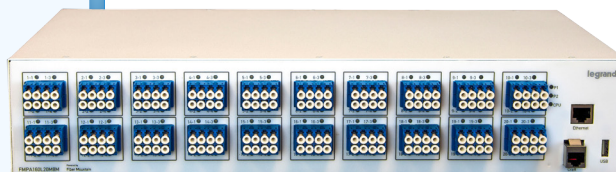
The Intellicore Intelligent Patching System (IPS) - FMPA series from Legrand®, provides passive optical 8, 12 and 24-fiber optic MPO-to-MPO or MPO-to-LC duplex breakout interfaces, simplifying installation and ongoing maintenance of increasingly dense fiber networks. Through the power of software management, the FMPA Series also provides interactive LED indicators for each port, which are controlled locally via a web interface, or via the Intellicore Management Software (IMS). The FMPA series is designed to interface with switches, routers and other fiber network devices with MPO or LC connectors.

### FMPA SERIES | APPLICATIONS

- Fiber Patching Systems
- QSFP/QSFP+ Breakout Systems
- Aggregation to high density 24 fiber or 12 fiber MPO trunk cabling
- Conversion capability for migration from 10 to 40 Gbps through breakout of high density 24-fiber MPO interfaces to LC duplex or 8-F or 12-F MPO interfaces



- ◀ Intellicore Management Software
- ▼ IPS Front



### INTELLIGENT PATCHING SYSTEM | FMPA SERIES

- 2 RU footprint, available in black or white with front panel cable management
- Built-in power redundancy protecting management functionality
- 24 fiber MPO breakouts to 12 fiber MPO, 8 fiber MPO or LC Duplex connectivity
- Available with single mode OS2 or multimode OM4 fiber
- Supports Method A or C polarities, compliant with TIA-568.3-D 2016 standards
- Automatically discoverable by the Intellicore management software
- Software-configurable tri-color (red, green and amber) LEDs for both front and rear faceplates
- Remote LED control via software for technician guidance on MACs
- Software provides documentation management, port labeling, reservation and asset management
- Improved security through audit trails with historical records of provisioning and monitoring of MACs with the management software
- Graphical rendering of the Layer 1 topology provides a network-wide view of the physical layer
- Enhanced features, such as the path finder, which can draw out the connection path from a selected port to the destination port

# INTELLIGENT PATCHING SYSTEM (IPS)

## FMPA SERIES

PART #	DESCRIPTION
FMPAS80DL20MAAB	Intelligent Patch System, 160xLC to 20xMPO 8-F SM, Black Enclosure, Type A Polarity
FMPAS80DL20MAAW	Intelligent Patch System, 160xLC to 20xMPO 8-F SM, White Enclosure, Type A Polarity
FMPAM80DL20MAAB	Intelligent Patch System, 160xLC to 20xMPO 8-F MM, Black Enclosure, Type A Polarity
FMPAM80DL20MAAW	Intelligent Patch System, 160xLC to 20xMPO 8-F MM, White Enclosure, Type A Polarity
FMPAS72DL18MAAB	Intelligent Patch System, 144xLC to 18xMPO 8-F SM, Black Enclosure, Type A Polarity
FMPAS72DL18MAAW	Intelligent Patch System, 144xLC to 18xMPO 8-F SM, White Enclosure, Type A Polarity
FMPAM72DL18MAAB	Intelligent Patch System, 144xLC to 18xMPO 8-F MM, Black Enclosure, Type A Polarity
FMPAM72DL18MAAW	Intelligent Patch System, 144xLC to 18xMPO 8-F MM, White Enclosure, Type A Polarity
FMPAS72DL06MCFB	Intelligent Patch System, 144xLC to 6xMPO 24-F SM, Black Enclosure, Type HD-C Polarity
FMPAS72DL06MCFW	Intelligent Patch System, 144xLC to 6xMPO 24-F SM, White Enclosure, Type HD-C Polarity
FMPAM72DL06MCFB	Intelligent Patch System, 144xLC to 6xMPO 24-F MM, Black Enclosure, Type HD-C Polarity
FMPAM72DL06MCFW	Intelligent Patch System, 144xLC to 6xMPO 24-F MM, White Enclosure, Type HD-C Polarity
FMPAS24MA08MCDDB	Intelligent Patch System, 24xMPO 8-F to 8xMPO 24-F SM, Black Enclosure, Type HD-A Polarity
FMPAS24MA08MCDW	Intelligent Patch System, 24xMPO 8-F to 8xMPO 24-F SM, White Enclosure, Type HD-A Polarity
FMPAM24MA08MCDDB	Intelligent Patch System, 24xMPO 8-F to 8xMPO 24-F MM, Black Enclosure, Type HD-A Polarity
FMPAM24MA08MCDW	Intelligent Patch System, 24xMPO 8-F to 8xMPO 24-F MM, White Enclosure, Type HD-A Polarity
FMPAS72DL12MBAB	Intelligent Patch System, 144xLC to 12xMPO 12-F SM, Black Enclosure, Type A Polarity
FMPAS72DL12MBAW	Intelligent Patch System, 144xLC to 12xMPO 12-F SM, White Enclosure, Type A Polarity
FMPAS72DL12MBCB	Intelligent Patch System, 144xLC to 12xMPO 12-F SM, Black Enclosure, Type C Polarity
FMPAS72DL12MBCW	Intelligent Patch System, 144xLC to 12xMPO 12-F SM, White Enclosure, Type C Polarity
FMPAM72DL12MBAB	Intelligent Patch System, 144xLC to 12xMPO 12-F MM, Black Enclosure, Type A Polarity
FMPAM72DL12MBAW	Intelligent Patch System, 144xLC to 12xMPO 12-F MM, White Enclosure, Type A
FMPAM72DL12MBCB	Intelligent Patch System, 144xLC to 12xMPO 12-F MM, Black Enclosure, Type C
FMPAM72DL12MBCW	Intelligent Patch Panel, 144xLC to 12xMPO 12-F MM, White Enclosure, Type C

### FIBER SPECIFICATIONS

Optical Characteristic	Single Mode MPO	Single Mode LC	Multimode MPO	Multimode LC
Insertion Loss (Max.)	.35dB	.3db	.35dB	.3dB
Insertion Loss (Typ.)	.10dB (All Fibers)	.15dB	.10dB (All Fibers)	.15dB
Return Loss (Max.)	-55dB 8° angle polish	-50dB	-20dB	-20dB

**Test Methods:** IL per TIA/EIA-455-171 Method B. RL per TIA/

# INTELLIGENT PATCHING SYSTEM (IPS)

## FMPA SERIES

FMPA SERIES CHASSIS SPECIFICATIONS	
Weight	10.4 lbs
Rack Mounting	Fits 19", 21" and 23" racks
Dimensions (H x W x D)	3.46" x 17.65" x 8.72" (8.79 cm x 44.83 cm x 22.15 cm)
Redundant AC Power	< 25 watts
Regulatory and Certifications	<ul style="list-style-type: none"> <li>- Test EMI as per B Class EN 55022</li> <li>- Safety compliance with all country relevant standards. Safety marking &amp; CB report</li> <li>- Safety compliance with UL 60950. Safety marking and CB report</li> <li>- Electrical verification in the operating temperature range of -5 C to 55 C</li> <li>- USB/ETHERNET compliance verification</li> <li>- GR63 mechanical and vibration testing</li> <li>- Humidity testing per Telcordia GR63/GR1089</li> <li>- Power supply surge / EFT testing</li> <li>- ESD (human body test level)</li> </ul>

FMPA SERIES MANAGEMENT INTERFACES	
Craft Port (RS232)	Front faceplate (RJ45). CLI access to kernel. CURL for API calls from CLI
Ethernet Port	Front faceplate (RJ45). LAN interface for Optivia management
USB Port	Front faceplate. Can be used for software upgrades
Graphical Web Interface	Embedded Graphical Interface
API RESTful Interface	HTML JSON Format. GET and POST for LED control, LED status, power supply and processor status. Digest authentication
HTTP Web server	For software updates via ETH connection. Digest authentication. SSL/TSL
SNMP	Trap forwarding for trap listeners

Specifications are subject to change without notice.



▲ IPS Rear