

- NOTES
1. OPTICAL PERFORMANCE CHARACTERISTICS SHALL BE IN ACCORDANCE WITH ORTRONICS SPECIFICATION 71800061C. PERFORMANCE TIER LEVEL SHALL BE DETERMINED BY ASSY PART NUMBER.
 2. EXTERNAL PORTS OF THE ADAPTERS HAVE PROTECTIVE DUST CAPS INSTALLED.
 3. MPO PORT ID LABEL WILL HAVE THE FOLLOWING TEXT ("XX", "ZZ", & "YY" ARE DERIVED FROM TABLES 5 & 6).
LINE 1: "XX"
LINE 2: "ZZ/125"
LINE 3: "1-12"
AND AN INDICATION OF POLARITY ("YY")
 4. THE "D" SUFFIX IN THE PART NUMBER DESIGNATES THE CORE SIZE OF FIBER IN THE CASSETTE.
 5. DATA SHEET PROVIDING INSERTION LOSS VALUES, BY PORT, SUPPLIED WITHIN CASSETTE ASSY PACKAGING.
 6. THE CASSETTE HOUSING IS BLACK POLYCARBONATE.
 7. FIBER #1 ON THE MPO CONNECTOR IS POSITIONED TOWARDS THE REFERENCE MARK ON THE ADAPTER.
 8. ALL DIMENSIONS ARE IN INCHES.

⬡ DENOTES NOTE REFERENCE.

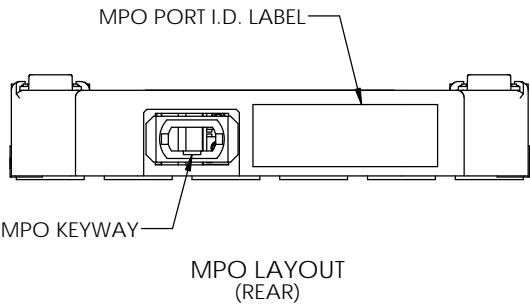
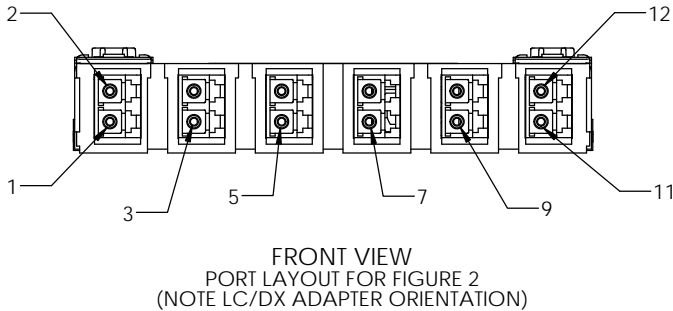
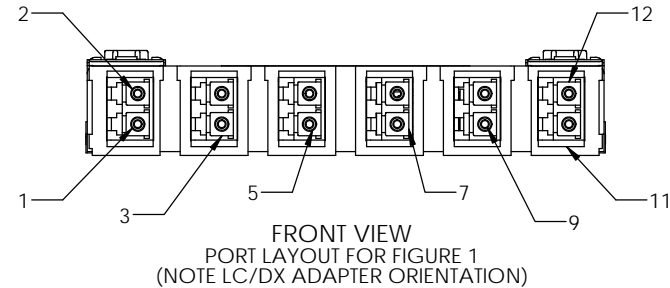


TABLE 1	
"AAA"	FRONT PNL ADAPTER
6LA	LC/DX (APC)
6LC	LC/DX (PC OR UPC)

TABLE 2	
"BB"	FIBER COUNT
12	12
24	TBD

TABLE 3		
"CD"	REAR ADAPTER KEYING	FIBER TYPE / BANDWIDTH
AH	TYPE A (KEY: UP/DOWN)	50/125, MM, (4.9 GHz-km)
AJ		9/125, SM
AM	TYPE B (KEY: UP/UP)	50/125, MM, (5.5 GHz-km)
BH		50/125, M, (4.9 GHz-km)
BM		50/125, MM, (5.5 GHz-km)

TABLE 4		
"D"	"X"	TIER
H	1	1
	2	2
	NONE	3
	3	3
J	NONE	1
	1	1
M	4	4

TABLE 5		
"YY"	POLARITY	ASSY FIGURE
NONE	A - B	FIGURE 1
A1	A - B	FIGURE 1
B1	TYPE B ARRAY	FIGURE 2
C1	A - A	FIGURE 1

XX		A1
ZZ/125		
1-12		

EXAMPLE OF MPO PORT ID LABEL ⬡

TABLE 6		
"D"	"XX"	"ZZ"
H	MM	50
J	SM	9
M	MM	50

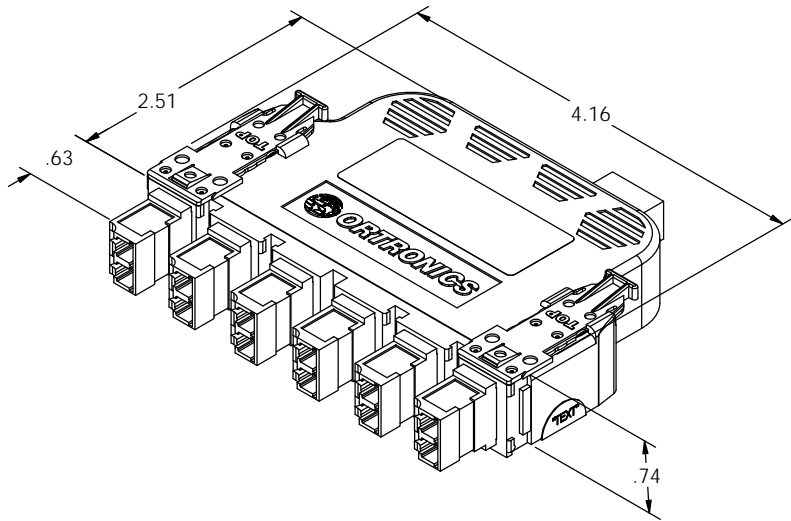


FIGURE 1
FOR POLARITY IDENTIFIER: "NONE", "A1" & "C1"
(NOTE LC/DX ADAPTER ORIENTATION)

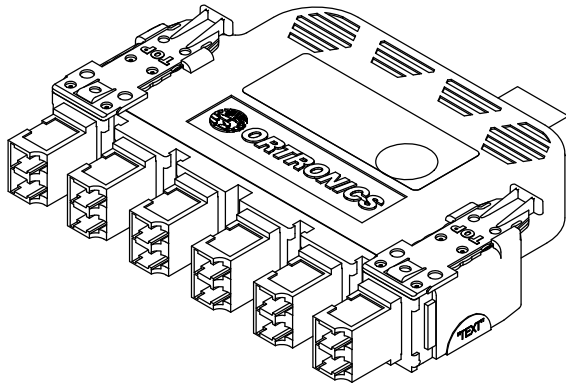


FIGURE 2
FOR POLARITY IDENTIFIER: "B1"
(NOTE LC/DX ADAPTER ORIENTATION)

OR-HDCAAAABBCD-XYX

BASE NUMBER
FRONT PANEL ADAPTER COUNT AND TYPE (SEE TABLE 1)
FIBER COUNT (SEE TABLE 2)
REAR ADAPTER KEYING (SEE TABLE 3)
FIBER TYPE AND BANDWIDTH (SEE TABLE 3)

POLARITY IDENTIFIER (SEE TABLE 5)
PERFORMANCE TIER LEVEL IDENTIFIER (SEE TABLE 4)

PART NUMBER LEGEND

*** NOTICE *** THIS DOCUMENT CONTAINS CONFIDENTIAL AND/OR PROPRIETARY INFORMATION INTENDED FOR USE ONLY BY THE INDIVIDUAL(S) PROVIDED. NEITHER THIS DOCUMENT, NOR ANY INFORMATION CONTAINED HEREIN, MAY BE COPIED, DISTRIBUTED, DISCLOSED TO ANY THIRD PARTY OR USED IN ANY MANNER OTHER THAN FOR WHICH IT HAS BEEN PROVIDED, WITHOUT THE PRIOR WRITTEN CONSENT OF ORTRONICS, INC. MANUFACTURING RELEASE. PRODUCT SPECIFICATIONS AND STANDARDS ARE SUBJECT TO CHANGE WITHOUT NOTICE.			ORTRONICS 125 EUGENE O'NEILL DRIVE NEW LONDON, CT 06320 TEL: 860-445-3800 FAX: 860-405-2990 WWW.ORTRONICS.COM			
TITLE HIGH DENSITY CASSETTE ASSY, 1/2 'U'			SIZE C	CAD FILE HDCAAAABBCDXYYC	DWG NO OR-HDCAAAABBCD-XYX	REV 05
DWN CHK APPR	CR RJG RAM	12/10/2013 12/12/2013 12/17/2013	SCALE 1:1	SHEET 1 OF 1		