



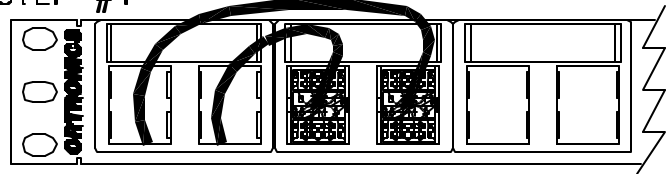
125 EUGENE O'NEILL DRIVE
 NEW LONDON, CT 06320
 TEL: 860-445-3800
 FAX: 860-405-2990

TITLE

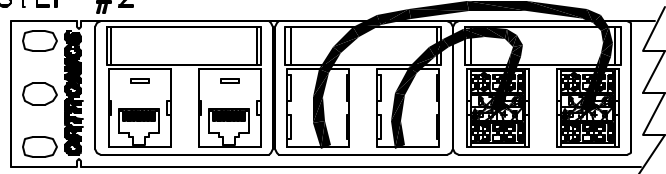
TracJack BEZEL PATCH PANEL
 INSTRUCTION SHEET

1. Pull wires through the first bezel. Place TracJacks face down into second bezel and terminate per wiring and cabling instructions. Snap TracJacks into the first bezel.
2. Repeat step 1 until all but the last 2 TracJacks are wired.
3. Last step: pull wires through the last bezel and place the TracJacks as shown. Terminate the TracJacks and snap into the bezel.
4. Follow up with the proper wire management for the back of the panel. (See reverse side of instruction sheet.)

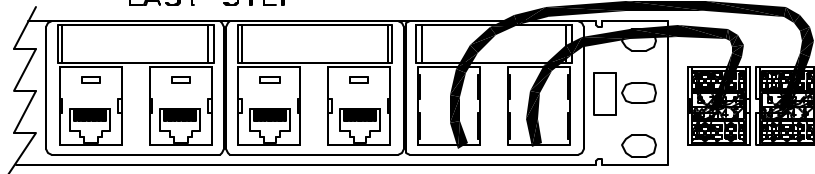
STEP #1



STEP #2



LAST STEP



CAD: 716\004411

INSTRUCTION SHEET #	REV.	ECN #	SHEET	DWN.BY:	DATE	CHK.BY:	DATE	APP.BY:	DATE
71600441	01	01429	1 of 2	LEVESQUE	02/29/00				



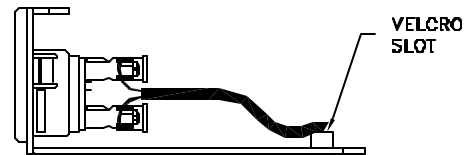
125 EUGENE O'NEILL DRIVE
 NEW LONDON, CT 06320
 TEL: 860-445-3800
 FAX: 860-405-2990

TITLE

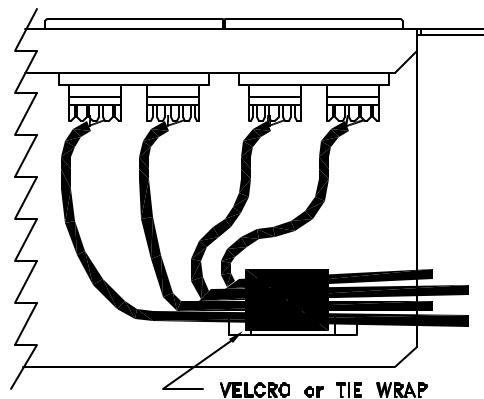
TracJack BEZEL PATCH PANEL
 INSTRUCTION SHEET

1. After terminating cables to modules, dress cables to shelf of panel.
2. Use slots in panel for either Velcro or Tie Wraps to secure cables to shelf.
3. Cables may be routed from both sides of the relay rack rather than from only one side.
4. Minimum cable bend radius is 4 times the outside cable diameter.

SIDE VIEW



TOP VIEW



CAD: 716\004411

INSTRUCTION SHEET #	REV.	ECN #	SHEET	DWN.BY:	DATE	CHK.BY:	DATE	APP.BY:	DATE
71600441	01	01429	2 of 2	LEVESQUE	02/29/00				