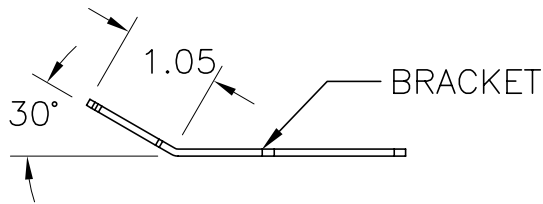
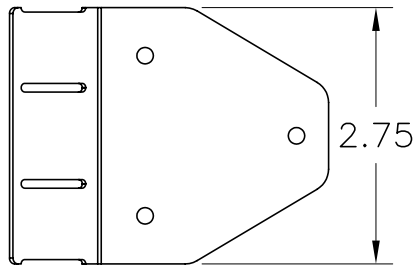
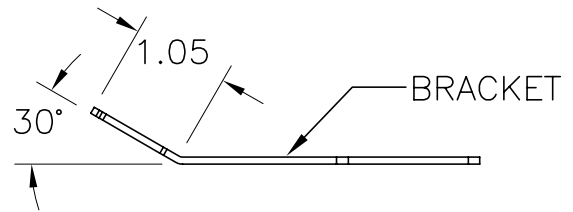
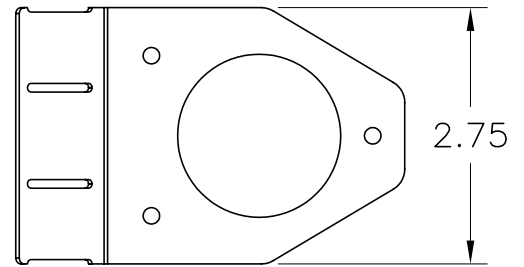


NOTES:

1. ALL DIMENSIONS ARE IN INCHES.
2. BRACKETS, WITH OR WITHOUT HOLE, ARE USED IN THE REAR OF A 1U CABINET TO STRAIN RELIEVE THE ENTRY OF CABLE INTO THE CABINET. THE BRACKET 'WITH HOLE' ALLOWS FOR A VERTICAL FEED-THRU FROM CABINET TO CABINET AND MAY BE USED FOR EITHER LEFT OR RIGHT-SIDE ENTRY.
3. TWO (2) HOOK-LOOP STRAPS & INSTALLATION INSTRUCTIONS INCLUDED.



BRACKET WITHOUT HOLE
(FOR USE WITH "FC" CABINETS
WITH NO TOP COVER CABLE CLEARANCE HOLE)



BRACKET WITH HOLE
(FOR USE WITH "FC" CABINETS
WITH TOP COVER CABLE CLEARANCE HOLE)



*** NOTICE ***
THIS DOCUMENT CONTAINS CONFIDENTIAL AND/OR PROPRIETARY INFORMATION INTENDED FOR USE ONLY BY THE INDIVIDUAL(S) SPECIFIED HEREIN AND ONLY FOR THE PURPOSE(S) PROVIDED. NEITHER THIS DOCUMENT, NOR ANY INFORMATION CONTAINED HEREIN, MAY BE COPIED, DISTRIBUTED, DISCLOSED TO ANY THIRD PARTY OR USED IN ANY MANNER OTHER THAN FOR WHICH IT HAS BEEN PROVIDED, WITHOUT THE PRIOR WRITTEN CONSENT OF ORTRONICS, INC.



DWN.BY:	RYNASKI	DATE	5/16/05
CHK.BY:	A.M.		5/18/05
APP.BY:	M.E.M.		5/18/05

TITLE				
BRACKET KIT, 1U, UPPER				
SIZE	CAD FILE	PART NUMBER		REV
A	FCBR001C	OR-FCBR-001		02
SCALE	DATE	SHEET		
NONE	6/14/06	1 OF 1		