

## Ortronics

### For your safety operation

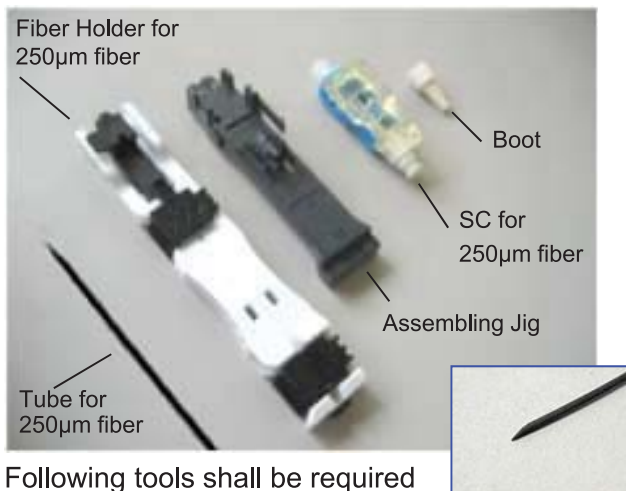
This product has been designed and manufactured to assure personal safety. Improper operation can result in bodily injury and serious damage to this product. Please read and observe all warnings instructions given in this operation manual.

- ★ **Wear safety glasses** before handling optical fiber to protect the eyes. Small pieces of glass fiber are very sharp and might get into the eyes or under the skin and cause injury.
- ★ **Never look into** the end of a connector or an optical fiber which may have a laser coupled to it. Laser light may damage your eyes. Please note that laser light is not visible.
- ★ If working in high places, please be careful not to drop any tools.

(Please use a wrist strap etc.)

### Components Description

Connector (with wedge)  
Boot, Tube,  
Fiber holder for 250 μm fiber  
Assembling Jig



Following tools shall be required for assembling the above parts:

1. Fiber Cleaver
2. Jacket Remover

Tube for 250μm fiber. One end is cut with angle.

### ⚠ Precautions

1. Improper assembly will result in a loss of performance. **Please read instructions** given in this operation manual.
2. The product is sensitive to dirt or dust. Do not take connector out of the package **until it is to be used**.
3. The performance will be influenced by the cleaved fiber surface condition. Please use a cleaver that has a good blade.
4. Please **insert the fiber into the connector slowly**. If the fiber is roughly inserted, it might be damaged or broken, leading to product failure. Broken fiber could be scattered in all directions.
5. Do not remove the dust cap **until the connector has been completely assembled**.
6. A proper amount of index matching gel is applied in the connector. Do not **insert fiber more than once**.

### Assembly tools example

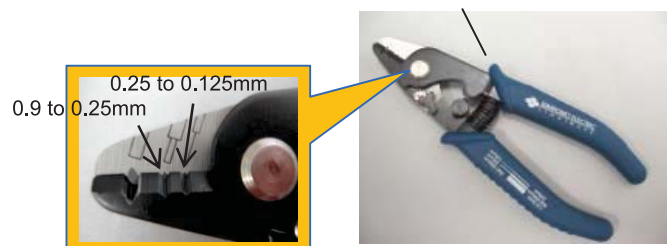
1 Fiber cleaver FC-7



2 Jacket remover JR-25



2 Jacket remover JR-M03



### 1 - Preparing connector

wedge

connector

**Be sure to wear Safety Glasses**

Be sure there is no space between the wedge and connector, if there is, push the wedge and connector together to realign.

### 2 - Setting connector

"U" shaped area must be free of debris/dust.

Set circular groove of connector tightly onto semicircular ridge of "U" shaped shelf of Jig.

### 3 - Preparing the fiber holder

Cover 1 Cover 2 Cover 3

Guide

Open covers 1, 2, and 3 before using the holder. Make sure the guide is not visible from the rear of the fiber holder. If the guide is visible push the back-end into the fiber holder.

Correct

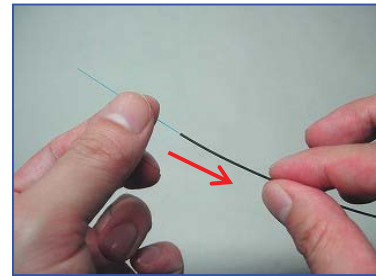
Incorrect

### 4 - Install boot and tube onto $\phi 0.25\text{mm}$ fiber

① Install boot onto  $\phi 0.25\text{mm}$  fiber

Tube edge (angle cut)

② Install tube onto  $\phi 0.25\text{mm}$  fiber



### 5 - Removing fiber coating

Remove fiber Coating, using fiber jacket remover

Removing fiber coating

Fiber coating

Tube

range of 30 to 35mm in case of using Sumitomo FC-7

### 6 - Cleaning Bare Fiber

Clean bare fiber with a lint-free Gauze Pad moistened with pure Alcohol

### 7 - Screening Fiber

$\pm 30^\circ$  degree

Bend fiber several times by moving it with your finger back and forth.

up

left ← right

down

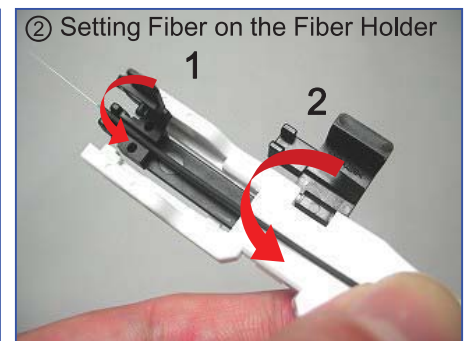
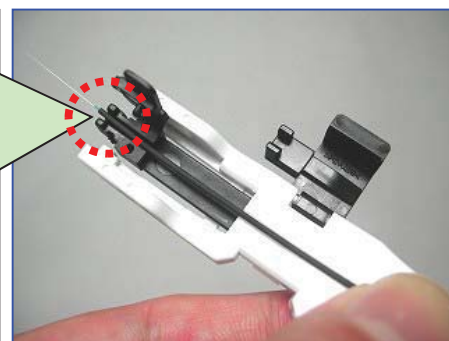
If fiber breaks, please start with a new fiber from Procedure [5]

### 8 - Setting Fiber on the Fiber Holder

① Set the fiber and tube into the fiber Holder using these dimensions.

Fiber coating 0 ~ 1mm

Tube 0 ~ 2mm



Fiber has to be fixed with finger and close it in order of the front cover and middle cover.

### ③ Setting Fiber on the Fiber Holder

3

Completion

Set the fiber along the groove tightly before closing the back cover

### 9 - The fiber cleaver

4. Push the cover of the cleaver

1. Set the cleaver for cutting

2. Set the fiber holder to the cleaver

3. Set the fiber holder tightly

### 10 - Fiber length check

Fiber front edge

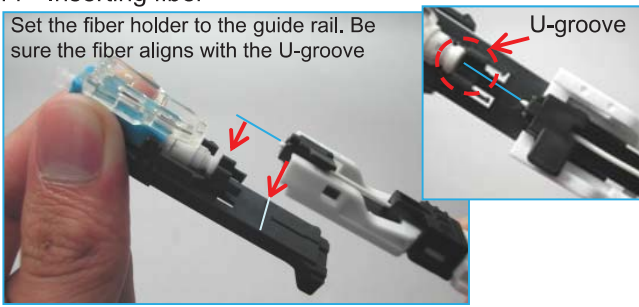
near Tube

Length of bare fiber : 9-11mm

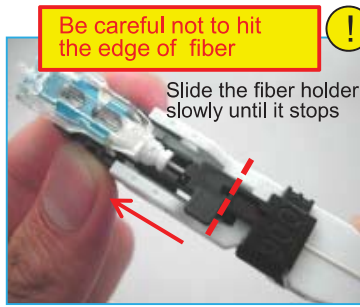
Attention

### 11 - Inserting fiber

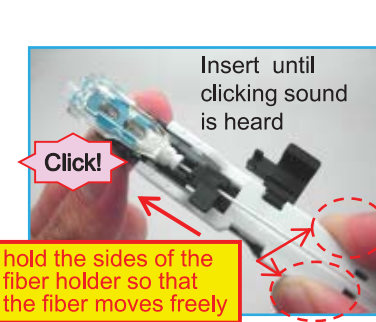
Set the fiber holder to the guide rail. Be sure the fiber aligns with the U-groove



Be careful not to hit the edge of fiber



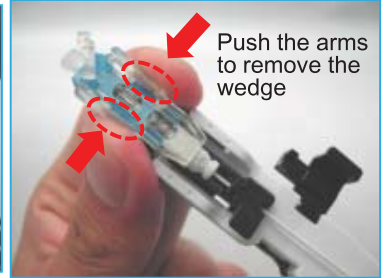
Attention



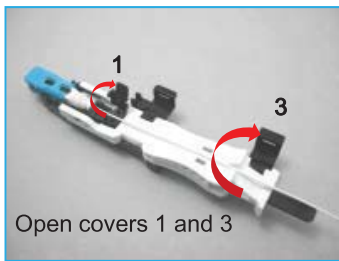
### 12 - Unlock the lever



### 13 - Remove the wedge



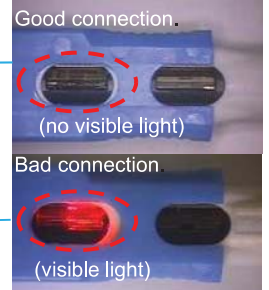
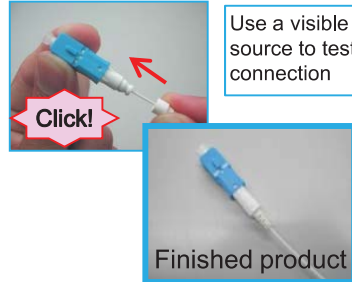
### 14 - Open the cover



### 15 - Remove connector



### 16 - Fitting the boot



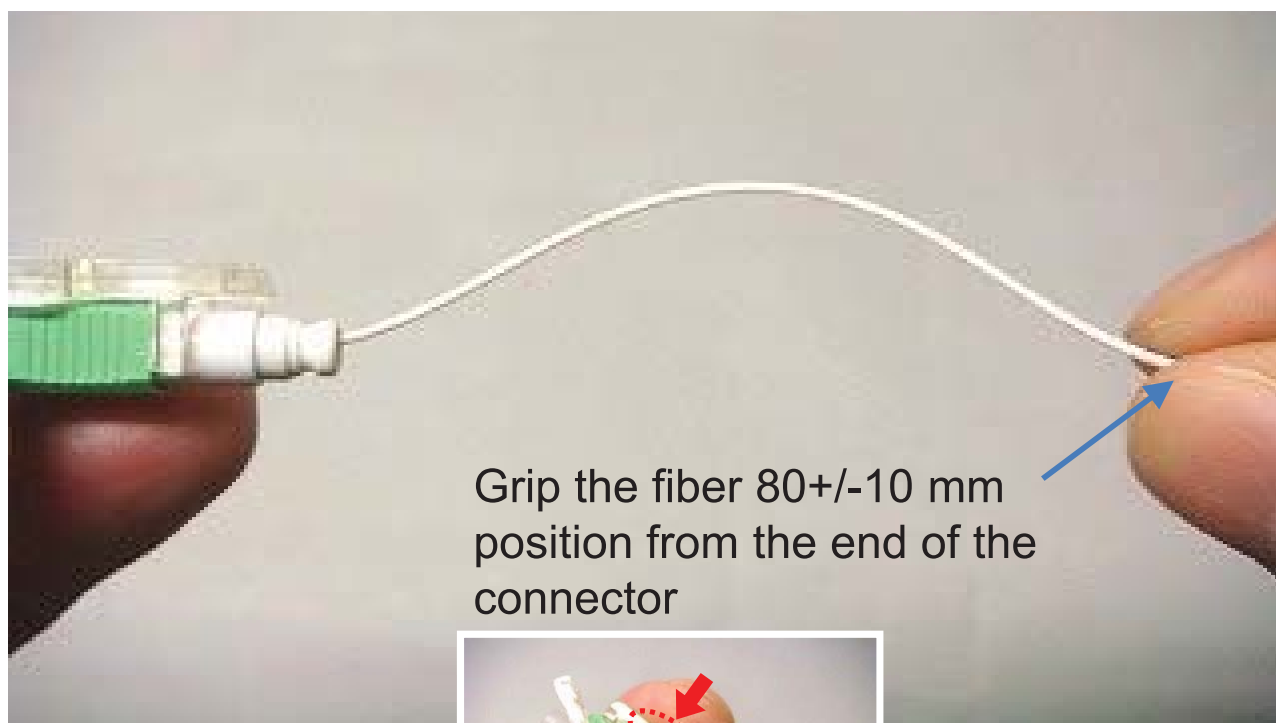
If the connector optical properties are insufficient to use, you can modify the connector properties by re-inserting the fiber and adjust the splice statement.

1 – Remove the boot and attach the wedge on a connector again (make sure there is no space between the wedge and the connector)



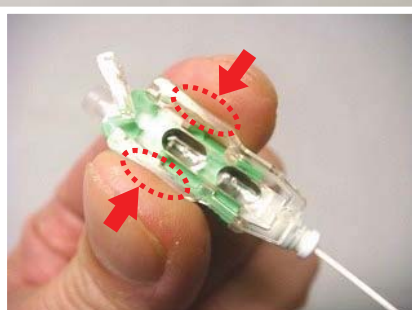
2 - Push the inserted fiber and create the bend again

**DO NOT PULL FIBER OUT FROM THE CONNECTOR**



Grip the fiber 80+/-10 mm position from the end of the connector

3 - Remove the Wedge



Push the arm to remove the wedge

4 – Re-install the boot