



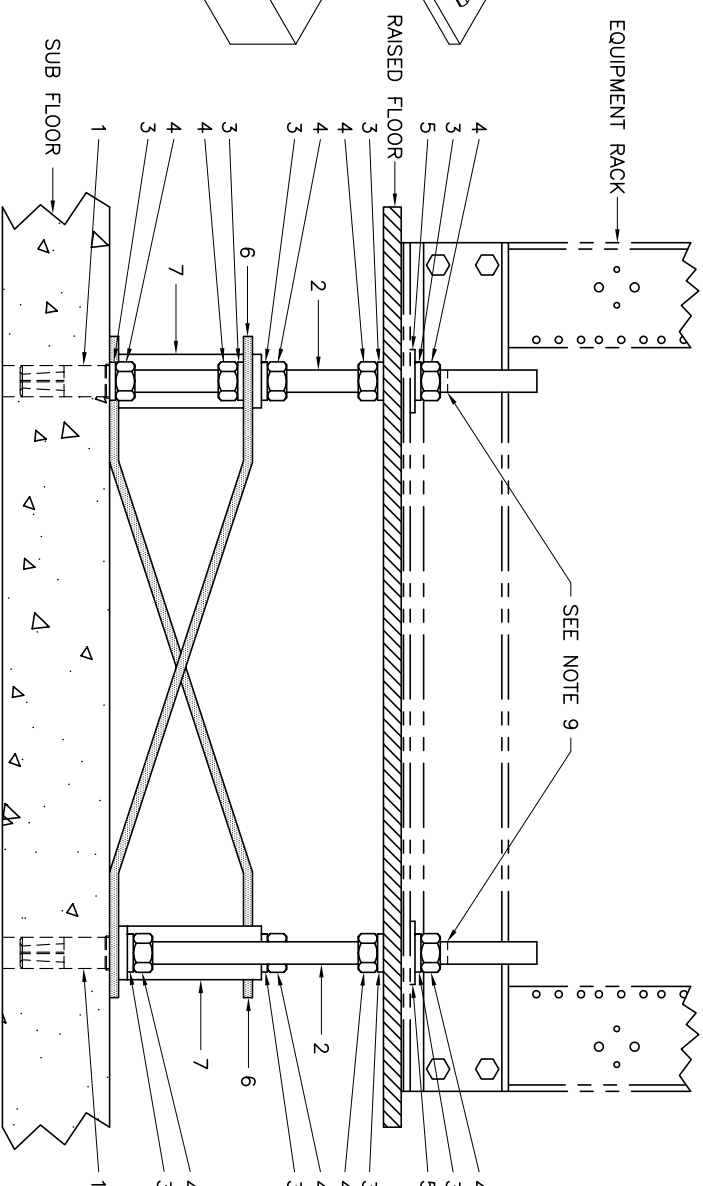
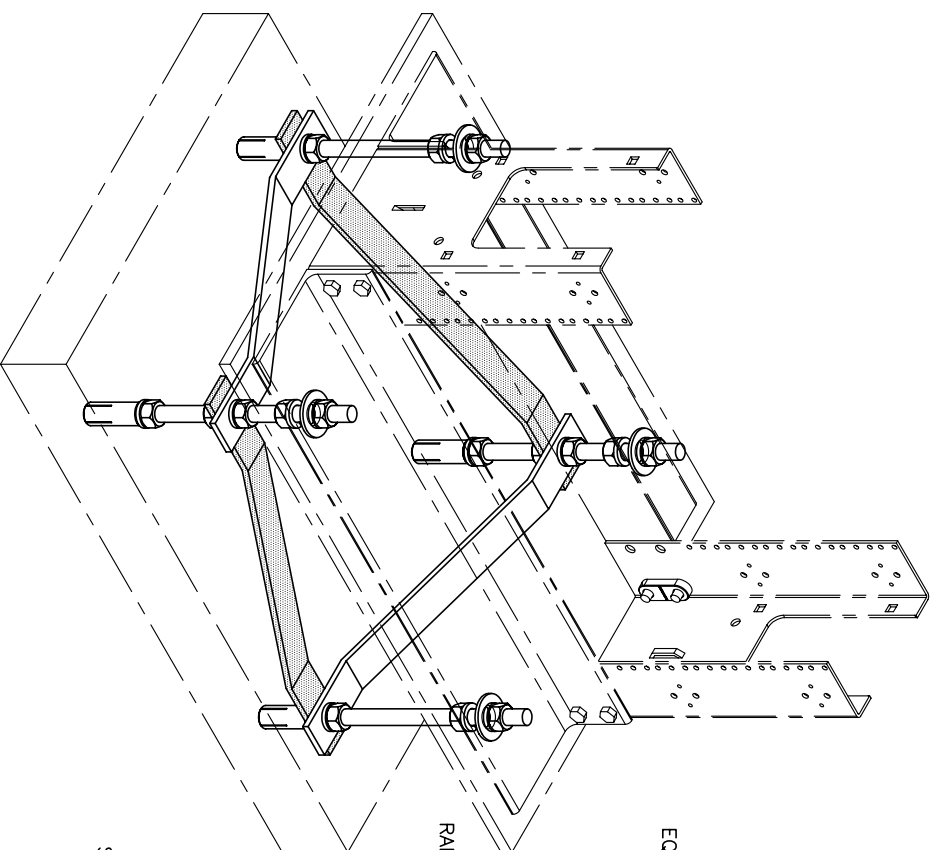
ORTRONICS[®]

125 EUGENE O'NEILL DRIVE
NEW LONDON, CT 06320
TEL: 860-445-3800
FAX: 860-405-2990

TITLE

RAISED FLOOR BRACKET KIT ASSEMBLY INSTRUCTIONS

SEISMIC INSTALLATION REQUIREMENTS SHOULD BE APPROVED
BY A LICENSED STRUCTURAL ENGINEER.
COMPLIANCE WITH ALL STATE AND LOCAL BUILDING CODES
ARE THE RESPONSIBILITY OF THE INSTALLER.



1. PLACE ASSEMBLED EQUIPMENT RACK WHERE IT WILL BE PERMANENTLY LOCATED.
2. MARK THE RAISED FLOOR THROUGH THE BASE ANGLE MOUNTING HOLES.
3. DRILL $2\frac{7}{32}$ " DIA. HOLES THROUGH THE RAISED FLOOR.
4. MARK THE SUB-FLOOR DIRECTLY BELOW THE CENTER OF THE DRILLED HOLES.
5. DRILL $2\frac{7}{32}$ " DIA. HOLES A MINIMUM OF $2\frac{9}{16}$ " DEEP IN THE SUB-FLOOR.
6. CLEAN HOLE AND INSTALL ANCHOR USING PROPER SETTING TOOL(HILTI P/N 00032981)
OR EQUIVALENT. TOOL NOT SUPPLIED.
7. SCREW THREADED RODS INTO THE ANCHORS TO A DEPTH OF APPROX. $\frac{7}{8}$ ".
8. FOLLOW THE ABOVE VIEWS FOR ASSEMBLY ORDER.
9. SAW OR CUT OFF EXCESS ROD, $\frac{3}{8}$ " TO $\frac{1}{2}$ " ABOVE THE TOP NUT, AS SHOWN.

ITEM	QUAN	DESCRIPTION
1	4	ANCHOR BOLTS
2	4	5/8-11 THREADED ROD
3	20	5/8" SPLIT LOCK WASHERS
4	20	5/8-11 HEX NUTS
5	4	5/8" FLAT WASHERS
6	2	BRACKET, SIDE TO SIDE
7	2	BRACKET, FRONT TO REAR

INSTRUCTION SHEET NUMBER

OR-71601375

REV

01

ECN

02357

SHEET

1 of 1

DWN.BY:

D. Bogue

DATE

03/18/03

CHK.BY:

DATE

APP.BY:

DATE