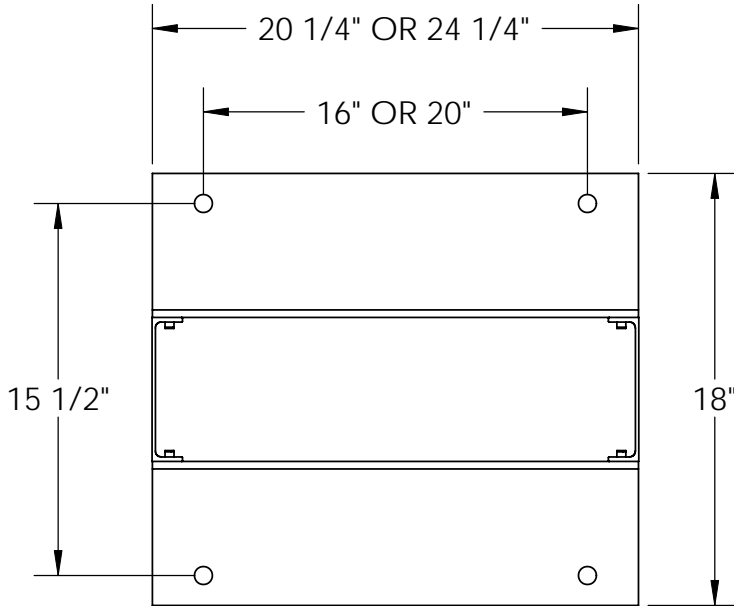
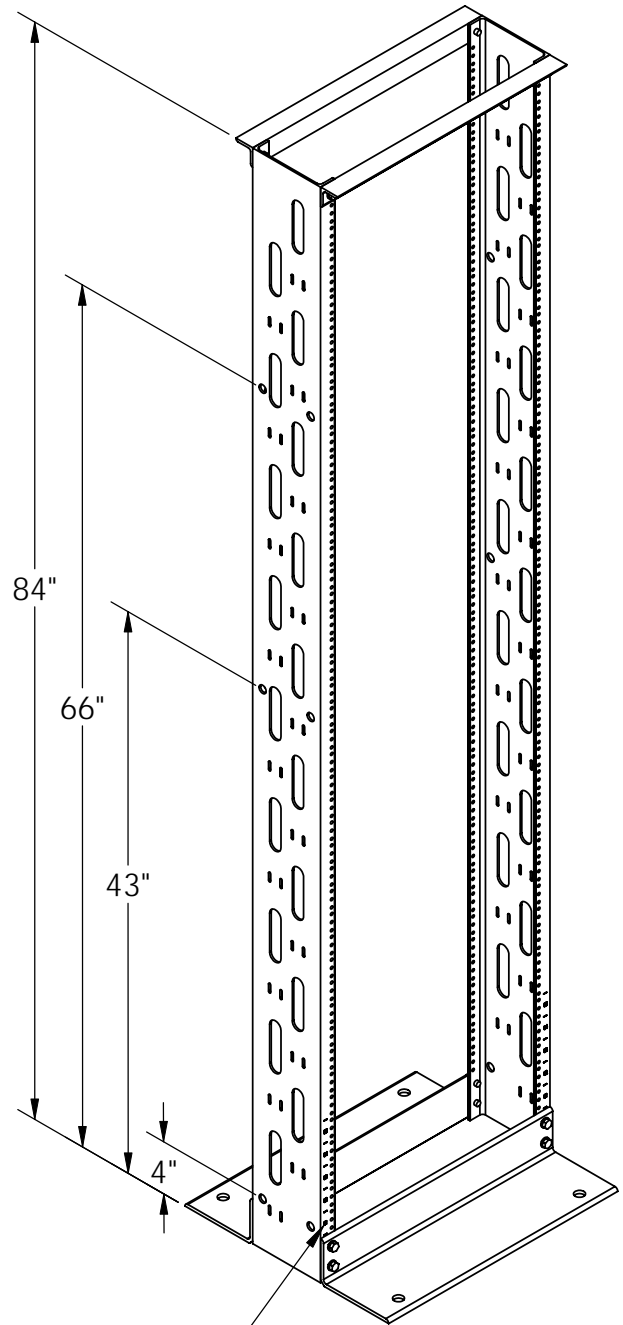


FOOT PRINT



| PART NUMBER DESIGNATIONS | |
|--------------------------|--------------|
| PART NUMBER | "XX" = WIDTH |
| OR-19-84-6T2SD-CMB | 19" |
| OR-23-84-6T2SD-CMB | 23" |



FRONT AND REAR
RACK UNITS NUMBERED.

STATIC CAPACITY 750LBS

*** NOTICE ***
THIS DOCUMENT CONTAINS CONFIDENTIAL
AND/OR PROPRIETARY INFORMATION INTENDED
FOR USE ONLY BY THE INDIVIDUAL(S) PROVIDED.
NEITHER THIS DOCUMENT, NOR ANY
INFORMATION CONTAINED HEREIN, MAY BE
COPIED, DISTRIBUTED, DISCLOSED TO ANY THIRD
PARTY OR USED IN ANY MANNER OTHER THAN
FOR WHICH IT HAS BEEN PROVIDED, WITHOUT THE
PRIOR WRITTEN CONSENT OF ORTRONICS, INC.
MANUFACTURING RELEASE, PRODUCT
SPECIFICATIONS AND STANDARDS ARE SUBJECT
TO CHANGE WITHOUT NOTICE.



ORTRONICS®

125 EUGENE O'NEILL DRIVE
NEW LONDON, CT 06320
TEL: 860-445-3800
FAX: 860-405-2990
WWW.ORTRONICS.COM

TITLE

HOMACO DIRECTPATH EQUIPMENT RACK,
84"H, 6"D, 19" & 23"W, BLACK

| | NAME | DATE | SIZE | CAD FILE | DWG NO | REV |
|------|---------|----------|-------------------|---------------|--------------------|--------|
| DWN | C.VACCA | 04/04/08 | A | XX846T2SDCMBC | OR-XX-84-6T2SD-CMB | 04 |
| CHK | S.A.L. | 08/06/08 | SCALE NONE WEIGHT | | SHEET | 1 OF 1 |
| APPR | A.M. | 08/07/08 | | | | |