

**ORTRONICS®**

125 EUGENE O'NEILL DRIVE
NEW LONDON, CT 06320
TEL: 860-445-3800
FAX: 860-405-2990

TITLE

CABLE MANAGEMENT CAGE FOR
MIGHTY MO 6 RACK

CABLE MANAGEMENT CAGE, MIGHTY MO 6 ASSEMBLY INSTRUCTIONS

STEPS:

1. Before mounting the cable cage, inventory the material contents per sheet 2 of 5 of the instruction sheets.

FIGURE 1 INSTRUCTIONS: Dual rack front mounting.

1. Both racks will be bolted together. Attach 3 brackets (with hooks pointing up), start at the bottom and working up using the #10 x $\frac{1}{2}$ " hex washer screws. Place the last bracket upside down at the top of the cage and place the cage over the attached brackets and secure the top bracket using the #10 x $\frac{1}{2}$ " hex washer head screws.

FIGURE 2 INSTRUCTIONS: Single rack front mounting.

1. Attach cable cage per figure 1 (sheet 3 of 5) using #10 x $\frac{1}{2}$ " hex washer head screws to rack side only.
2. Insert the square plastic nuts into the side of the rack at each bracket location.
3. Secure end support brackets using #10 x $\frac{1}{2}$ " hex washer head screws into the nuts.
4. Attach end brackets to cage brackets using #10 x $\frac{1}{2}$ " hex washer head screws.

FIGURE 3 INSTRUCTIONS: Swing latch replacement installation.

1. Installation can be either right or left hand swing outs.
2. Position latch at end of ring and tap into place with a rubber mallet or piece of wood.

CAD: 716010181.DWG

INSTRUCTION SHEET #	REV.	ECN #	SHEET	DWN.BY:	DATE	CHK.BY:	DATE	APP.BY:	DATE
OR-71601478	00		1 of 5	LEVESQUE	10/04/05	CAC	10/05/05	RZ	10/05/05



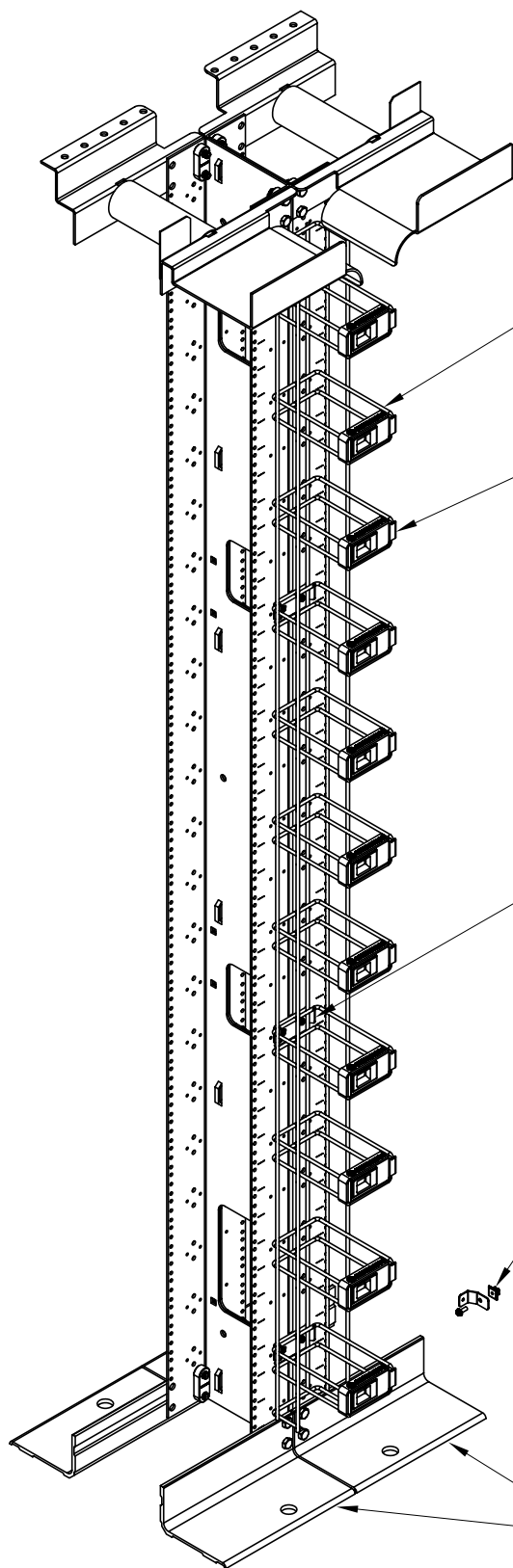
ORTRONICS®

125 EUGENE O'NEILL DRIVE
NEW LONDON, CT 06320
TEL: 860-445-3800
FAX: 860-405-2990

TITLE

CABLE MANAGEMENT CAGE FOR
MIGHTY MO 6 RACK

TYPICAL ASSEMBLED VIEW



MIGHTY MO 6 VERTICAL CABLE
MANAGEMENT CAGE
(QTY. 1)

LATCH, SWING ASSEMBLY 4" CAGE
(QTY. 11)

BRACKET FRONT MOUNT KIT, 4" CAGE
(QTY. 4)
#10 x 1/2" HEX WASHER SCREW
(QTY. 8)

BRACKET END SUPPORT KIT, 4" CAGE
(QTY. 4)

MIGHTY MO 6 RACK, 6.50 CHANNEL
(NOT INCLUDED)
2 RACKS SHOWN FOR CLARITY ONLY

CAD: 716014782.DWG

INSTRUCTION SHEET #	REV.	ECN #	SHEET	DWN.BY:	DATE	CHK.BY:	DATE	APP.BY:	DATE
OR-71601478	00		2 of 5	LEVESQUE	10/04/05	10/04/05	10/05/05	RZ	10/05/05



ORTRONICS®

125 EUGENE O'NEILL DRIVE
NEW LONDON, CT 06320
TEL: 860-445-3800
FAX: 860-405-2990

TITLE

CABLE MANAGEMENT CAGE FOR
MIGHTY MO 6 RACK

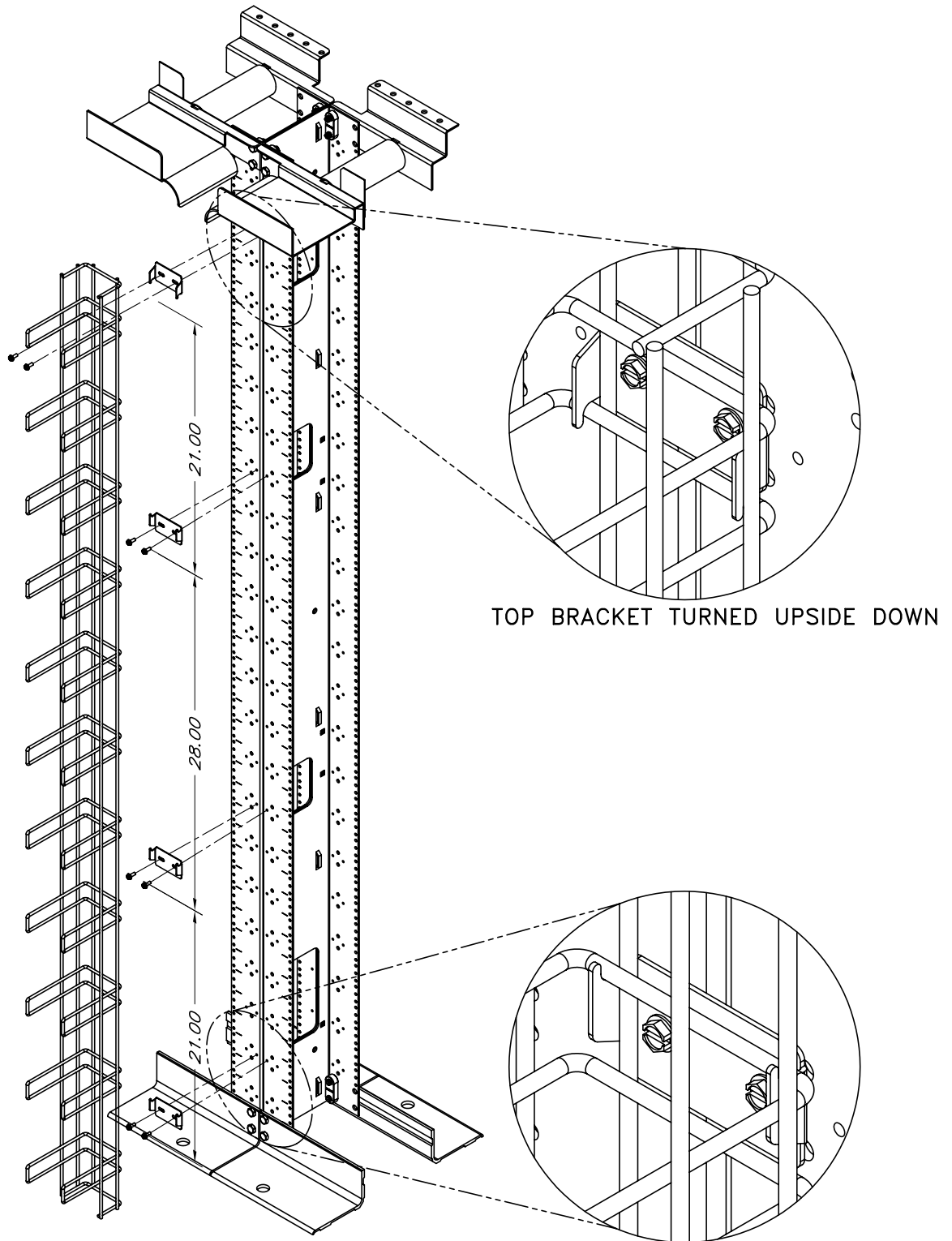


FIGURE 1

CAD: 716014783.DWG

INSTRUCTION SHEET #	REV.	ECN #	SHEET	DWN.BY:	DATE	CHK.BY:	DATE	APP.BY:	DATE
OR-71601478	00		3 of 5	LEVESQUE	10/04/05	10/04/05	10/05/05	RZ	10/05/05



ORTRONICS®

125 EUGENE O'NEILL DRIVE
NEW LONDON, CT 06320
TEL: 860-445-3800
FAX: 860-405-2990

TITLE

CABLE MANAGEMENT CAGE FOR
MIGHTY MO 6 RACK

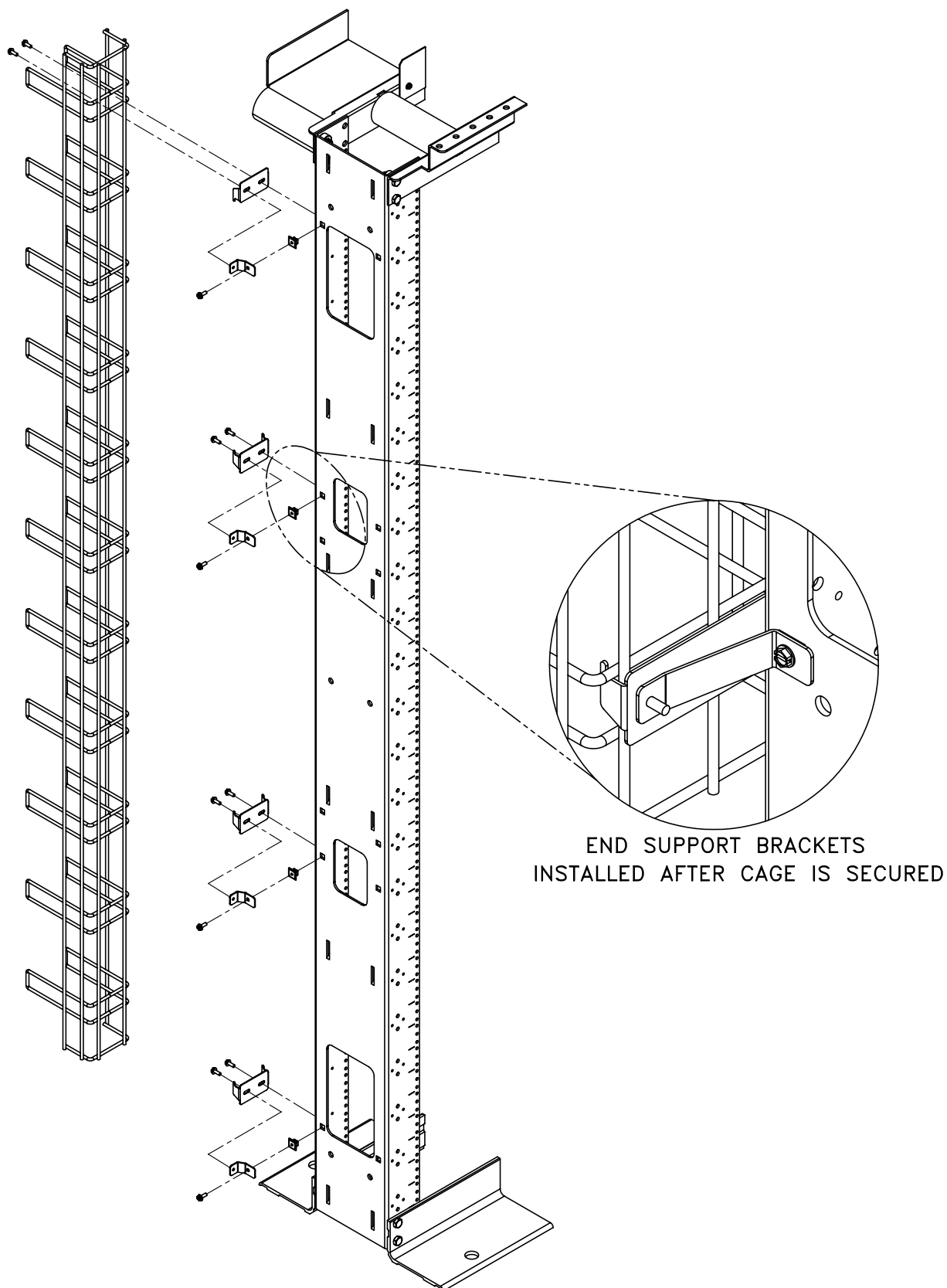


FIGURE 2

CAD: 716014784

INSTRUCTION SHEET #	REV.	ECN #	SHEET	DWN.BY:	DATE	CHK.BY:	DATE	APP.BY:	DATE
OR-71601478	00		4 of 5	LEVESQUE	10/04/05	CAC	10/05/05	RZ	10/05/05

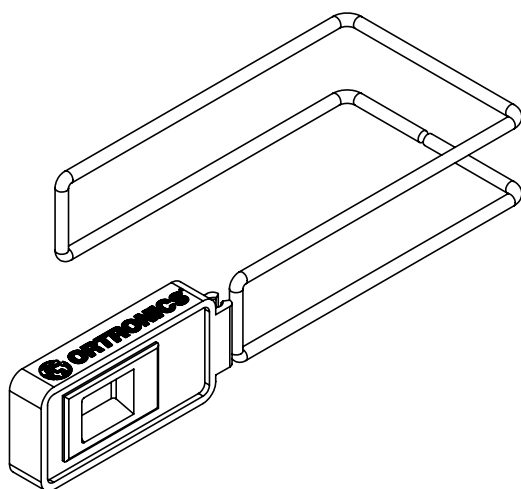


ORTRONICS®

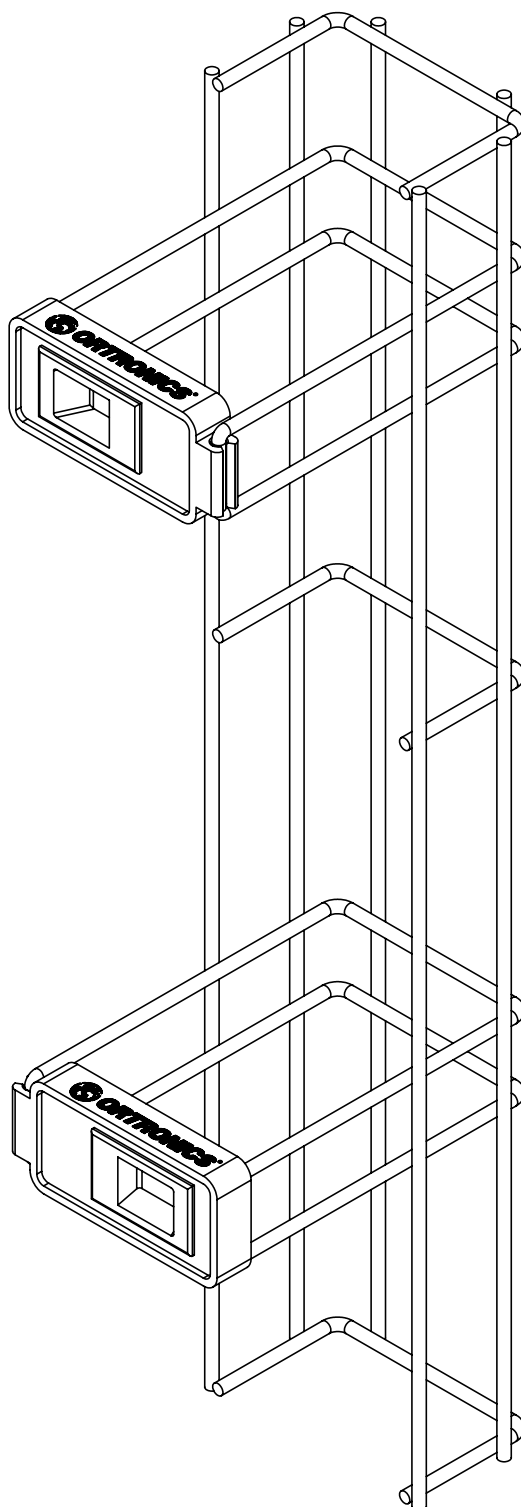
125 EUGENE O'NEILL DRIVE
NEW LONDON, CT 06320
TEL: 860-445-3800
FAX: 860-405-2990

TITLE

CABLE MANAGEMENT CAGE FOR
MIGHTY MO 6 RACK



TO REPLACE LATCHES
POSITION LATCH AT END OF
RING AND TAP INTO PLACE
WITH A RUBBER Mallet OR
BLOCK OF WOOD



LATCH SHOWN INSTALLED AS
RIGHT AND LEFT HAND SWING

FIGURE 3

CAD: 716014785

INSTRUCTION SHEET #	REV.	ECN #	SHEET	DWN.BY:	DATE	CHK.BY:	DATE	APP.BY:	DATE
OR-71601478	00		5 of 5	LEVESQUE	10/04/05	CAC	10/05/05	RZ	10/05/05