



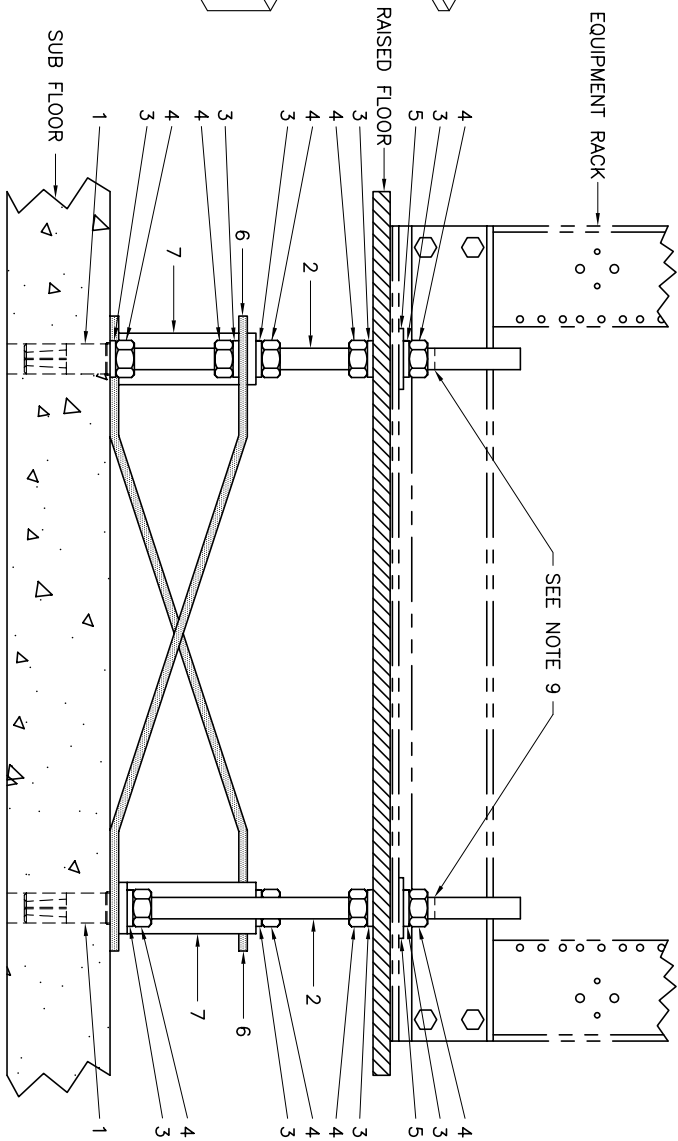
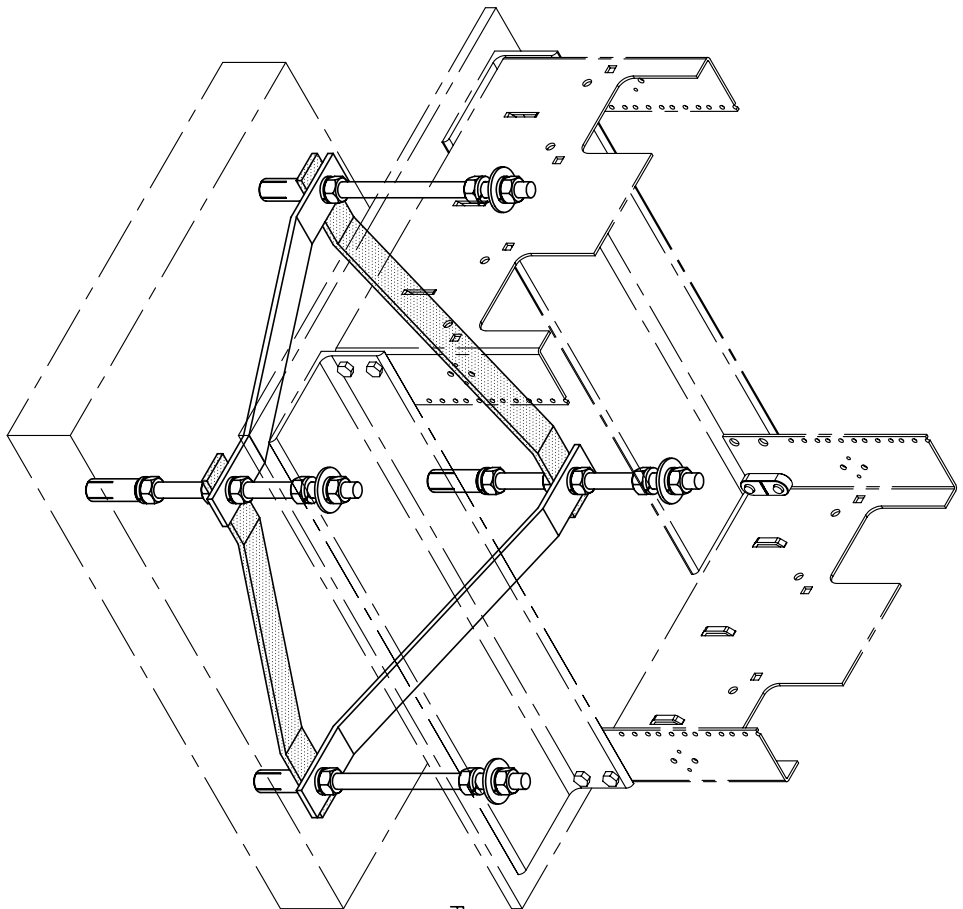
# ORTRONICS

125 EUGENE O'NEILL DRIVE  
NEW LONDON, CT 06320  
TEL: 860-445-3800  
FAX: 860-405-2990

TITLE

## RAISED FLOOR BRACKET KIT ASSEMBLY INSTRUCTIONS 16.25" RACKS

SEISMIC INSTALLATION REQUIREMENTS SHOULD BE APPROVED  
BY A LICENSED STRUCTURAL ENGINEER.  
COMPLIANCE WITH ALL STATE AND LOCAL BUILDING CODES  
ARE THE RESPONSIBILITY OF THE INSTALLER.



ITEM	QUAN	DESCRIPTION
1	4	ANCHOR BOLTS
2	4	5/8-11 THREADED ROD
3	20	5/8" SPLIT LOCK WASHERS
4	20	5/8-11 HEX NUTS
5	4	5/8" FLAT WASHERS
6	2	BRACKET, SIDE TO SIDE
7	2	BRACKET, FRONT TO REAR

1. PLACE ASSEMBLED EQUIPMENT RACK WHERE IT WILL BE PERMANENTLY LOCATED.
2. MARK THE RAISED FLOOR THROUGH THE BASE ANGLE MOUNTING HOLES.
3. DRILL 27/32" DIA. HOLES THROUGH THE RAISED FLOOR.
4. MARK THE SUB-FLOOR DIRECTLY BELOW THE CENTER OF THE DRILLED HOLES.
5. DRILL 27/32" DIA. HOLES A MINIMUM OF 2 5/16" DEEP IN THE SUB-FLOOR.
6. CLEAN HOLE AND INSTALL ANCHOR USING PROPER SETTING TOOL.(HILTI P/N 00032981)  
OR EQUIVALENT. TOOL NOT SUPPLIED.
7. SCREW THREADED RODS INTO THE ANCHORS TO A DEPTH OF APPROX. 7/8".
8. FOLLOW THE ABOVE VIEWS FOR ASSEMBLY ORDER.
9. SAW OR CUT OFF EXCESS ROD, 3/8" TO 1/2" ABOVE THE TOP NUT, AS SHOWN.