

- NOTES
- OPTICAL PERFORMANCE CHARACTERISTICS SHALL BE IN ACCORDANCE WITH SPECIFICATION OR-71800061C. PERFORMANCE TIER LEVEL SHALL BE PER TABLE 1.
 - EXTERNAL PORTS OF THE ADAPTERS HAVE PROTECTIVE DUST CAPS INSTALLED.
 - MPO PORT ID LABEL WILL HAVE THE FOLLOWING TEXT ("AA" & "BB" ARE DERIVED FROM TABLE 1).
LINE 1: "AA"
LINE 2: "BB/125"
LINE 3: "1-12"
AND AN INDICATION OF POLARITY ("ZZ"), SEE TABLE 4.
 - THE "GGG" SUFFIX IN THE PART NUMBER DESIGNATES THE TYPE & BANDWIDTH OF THE FIBER IN THE CASSETTE. SEE TABLE 1.
 - WHEN "XYZZ" IS OMITTED AS A SUFFIX TO THE PART NUMBER, THE CONFIGURATION IS STANDARD.
 - LABEL SHOWING INSERTION LOSS VALUES, BY PORT, PROVIDED ATTACHED TO CASSETTE.
 - THE CASSETTE HOUSING IS BLACK SHEET METAL.
 - FOR SM CASSETTE WITH TYPE B REAR ADAPTER KEYING, REAR MPO APC CONNECTOR IS REVERSED ANGLED TO FUNCTION WITH LEGRAND STANDARD TRUNK CABLES.
 - CONFIGURATIONS OF POLARITY IDENTIFIER "NONE" OR "A1" AND REAR MPO ADAPTER TYPE IDENTIFIER "NONE" OR "A" ARE DESIGNED FOR USE IN ACCORDANCE WITH ANSI/TIA-568.3-D "CONNECTIVITY METHOD A SUPPORTING MULTIPLE DUPLEX SIGNALS". CONFIGURATIONS OF POLARITY IDENTIFIER "B1" AND REAR MPO ADAPTER TYPE IDENTIFIER "C" ARE DESIGNED FOR USE IN PAIRS WITH CONFIGURATIONS OF POLARITY IDENTIFIER "A1" AND REAR MPO ADAPTER TYPE IDENTIFIER "C" IN ACCORDANCE WITH ANSI/TIA-568.3-D "CONNECTIVITY METHOD B SUPPORTING MULTIPLE DUPLEX SIGNALS".
 - ALL DIMENSIONS ARE IN INCHES.

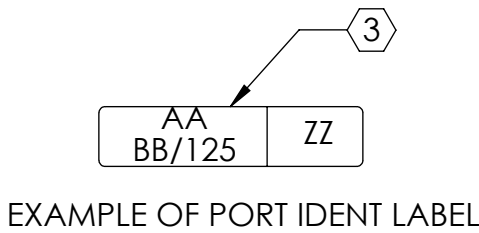
⬡ DENOTES NOTE REFERENCE.

TABLE 1			
"GGG"	TYPE	"Y"	TIER
09	SM 9/125	NONE	1
		1	1
		2	2
50E	MM 50/125 (4.9 GHz-km)	2	2
		NONE	3
		3	3
		4	4
50M	MM 50/125 (5.5 GHz-km)	4	4

TABLE 2		
"GGG"	"AA"	"BB"
09	SM	9
50E	MM	50
50M	MM	50

TABLE 3	
"X"	MPO TYPE
NONE OR A	12 FIBER MALE TYPE A (KEY UP TO KEY DOWN)
C	12 FIBER MALE TYPE B (KEY UP TO KEY UP)

TABLE 4	
"ZZ"	POLARITY IDENTIFIER
NONE OR A1	STANDARD
B1	TYPE B ARRAY
C1	REVERSE PAIR POSITIONING

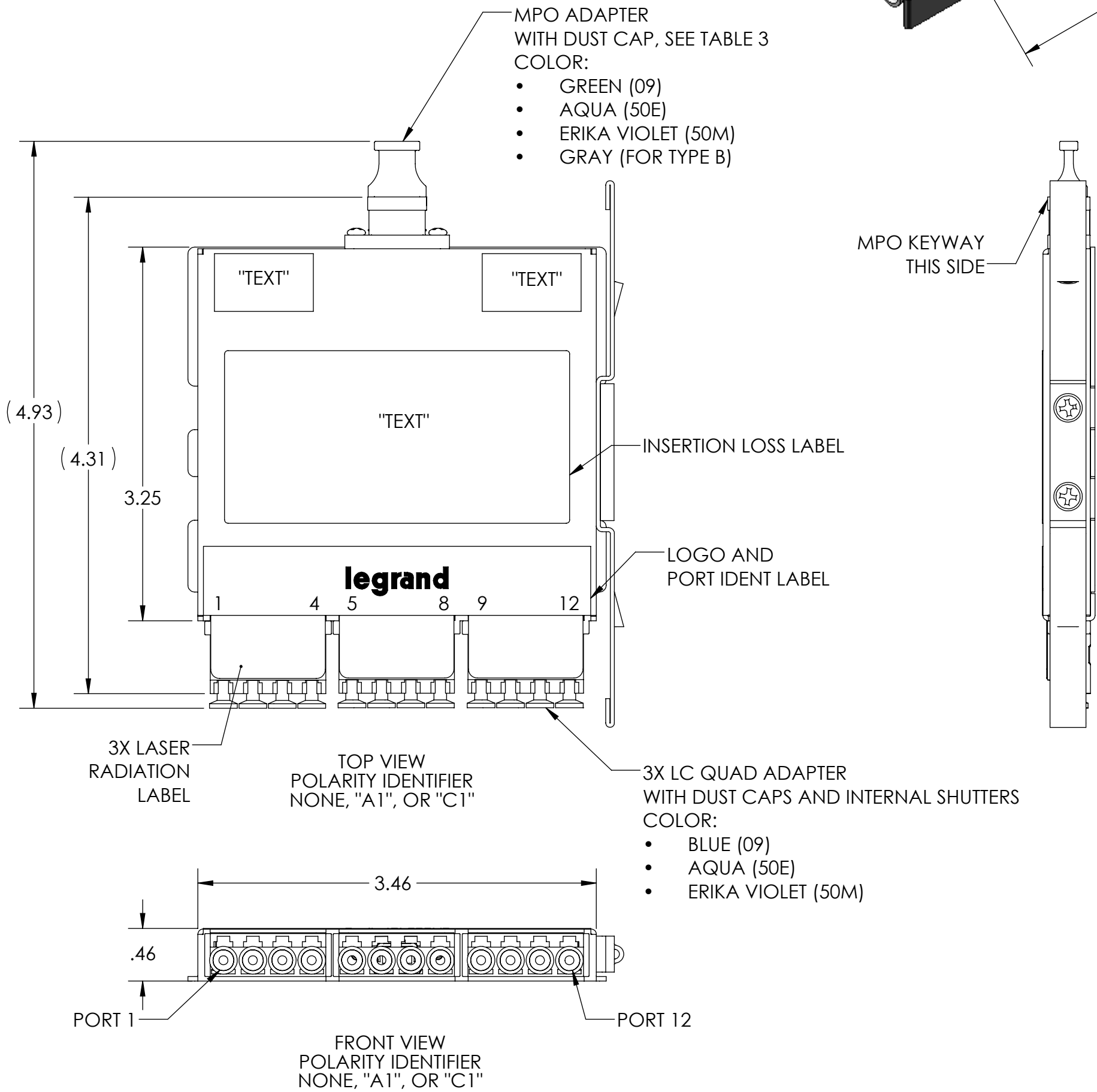


M7LCQ12-GGGXYZZ

BASE NUMBER

MODE(GGG)
MPO ADAPTER TYPE (X)
TIER (Y)
POLARITY (ZZ)
(SEE TABLES)

PART NUMBER LEGEND



*** NOTICE ***
THIS DOCUMENT CONTAINS CONFIDENTIAL AND/OR PROPRIETARY INFORMATION INTENDED FOR USE ONLY BY THE INDIVIDUAL(S) PROVIDED.
NEITHER THIS DOCUMENT, NOR ANY INFORMATION CONTAINED HEREIN, MAY BE COPIED, DISTRIBUTED, DISCLOSED TO ANY THIRD PARTY OR USED IN ANY MANNER OTHER THAN FOR WHICH IT HAS BEEN PROVIDED, WITHOUT THE PRIOR WRITTEN CONSENT OF ORTRONICS, INC.



WWW.LEGRAND.US

TITLE				
CASSETTE, M7, LCQ, 12F, .3U				
DWN	DMS	5/5/2016	SIZE C	CAD FILE M7LCQ12GGGXYZZC
CHK	RJG	5/6/2016	DWG NO M7LCQ12-GGGXYZZ	REV 03
APPR	MJW	5/18/2016	SCALE 1:1	SHEET 1 OF 2

F

E

D

C

B

A

8

7

6

5

4

3

2

1

F

E

D

C

B

A

