

# DataCab<sup>™</sup>

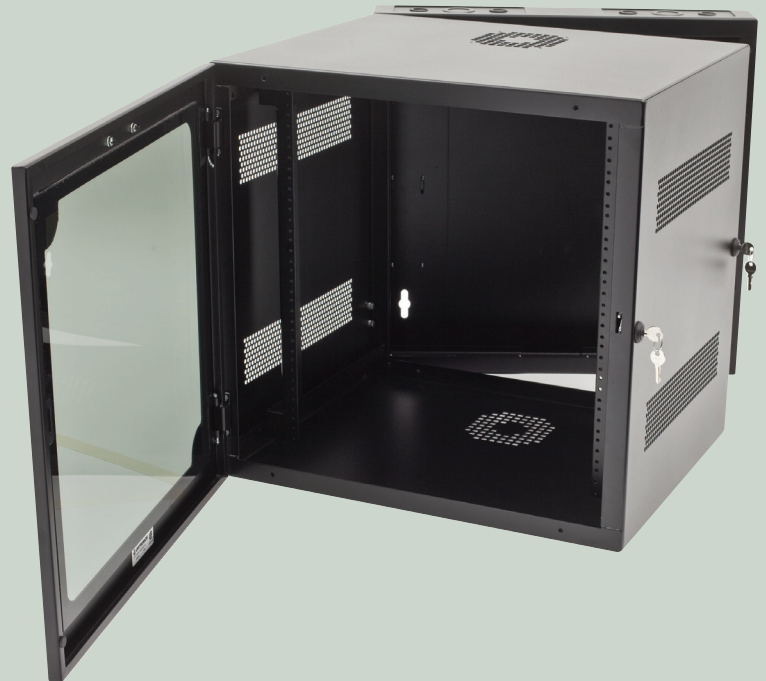
## Wall Mount Cabinets

DataCab Wall Mount Cabinets are an ideal solution for open office or telecom room applications where floor space is limited.

The Ortronics<sup>®</sup> DataCab wall mount cabinets are perfect for both active equipment and passive zone cabling. The thin line front door construction offers more room in the center section to provide easy access to the equipment.

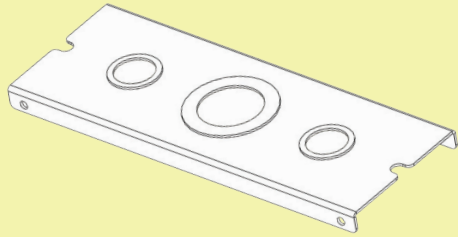
The heavy duty construction of the cabinet minimizes sagging under heavy loads. The hinge side placement of the rear section mounting holes provides additional support when the center section is open for terminations.

The sides of the cabinet are vented for passive cooling of the active equipment, and the optional 50cfm fan is 50% quieter than the fans of most other leading cabinets.



### Features

- Choice of solid or Plexiglas<sup>®</sup> door
- Locking center section swings out to provide easy access
- Door and center section are keyed alike
- Includes one pair of fully adjustable #12-24 EIA mounting rails
- Heavy-duty welded steel construction
- Vented sides for passive cooling of active equipment
- Optional 50cfm cooling fans are available to further protect active equipment



The DataCab wall mount cabinet comes standard with four removable cable knockout panels on the rear section. Each section contains one knock-out that can be 1-3/8" or 2" diameter and two knockouts that can be 7/8" or 1-1/8" diameter.



## Ordering Information

### DataCab Wall Mount Cabinets

PART NO.	DESCRIPTION	WEIGHT CAPACITY
OR-DCW122424S-B	12U x 24"W x 24"D, solid door, height is 23.50", black	125 lbs
OR-DCW122424P-B	12U x 24"W x 24"D, Plexiglas® door, height is 23.50", black	125 lbs
OR-DCW192424S-B	19U x 24"W x 24"D, solid door, height is 35.75", black	150 lbs
OR-DCW192424P-B	19U x 24"W x 24"D, Plexiglas® door, height is 35.75", black	150 lbs
OR-DCW262424S-B	26U x 24"W x 24"D, solid door, height is 48.00", black	175lbs
OR-DCW262424P-B	26U x 24"W x 24"D, Plexiglas® door, height is 48.00", black	175 lbs

### DataCab Accessories

PART NO.	DESCRIPTION
OR-MMCFAN-4-50	Fan kit, 4", 50cfm with finger guard and 2' power cord
OR-MMWBPK	Brush plate kit
OR-DCW12M12-B	12U mounting rail, #12-24, one pair
OR-DCW19M12-B	19U mounting rail, #12-24, one pair
OR-DCW26M12-B	26U mounting rail, #12-24, one pair



## Ortronics

125 Eugene O'Neill Drive  
 New London, CT 06320  
 (800) 934.5432  
 860.445.3900 (sales)  
 860.405.2992 (fax)  
[www.legrand.us/ortronics](http://www.legrand.us/ortronics)