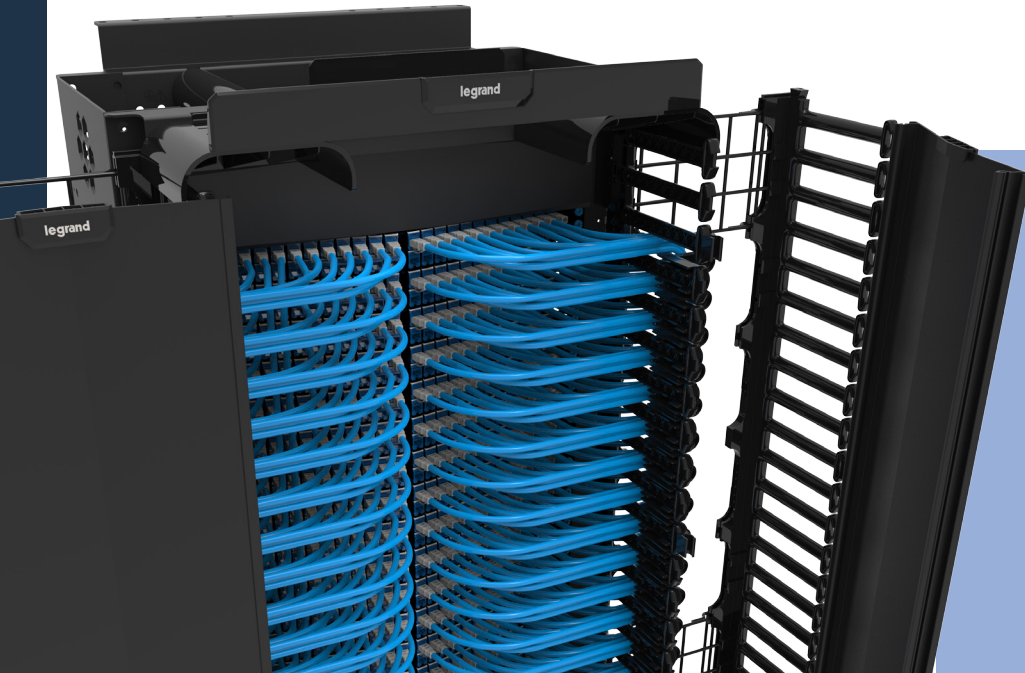


MIGHTY MO[®] 6 ENHANCED CABLE MANAGEMENT SYSTEM REDEFINED



CONFIGURATIONS & FEATURES

Components of the Value Cable Management System

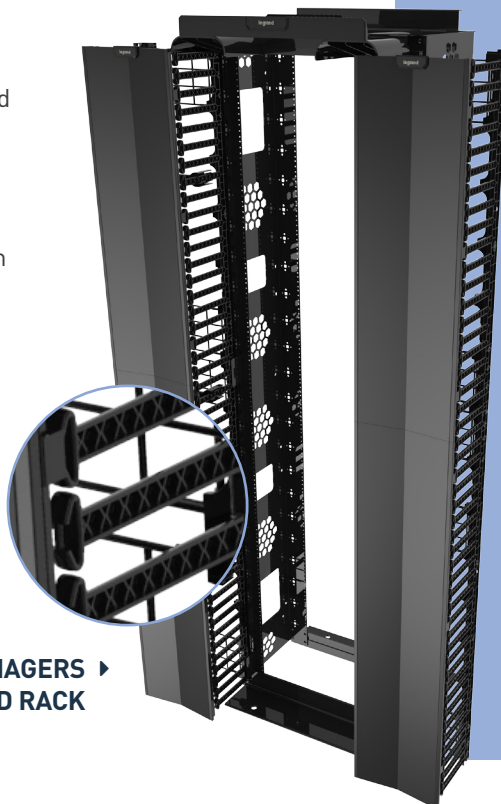
- Mighty Mo 6 Enhanced Channel Rack
 - Depths: 6.5", 10.5", 16.25"
 - Heights: 6'(37RU), 7'(45RU) and 8'(51RU)
 - Network racks
- Q-Series Vertical Cable Manager
 - Widths: 4", 6", 10", 12"
 - Heights: 6'(37RU), 7'(45RU) and 8'(51RU)
 - 6" Depth on all versions

WHAT DIFFERENTIATES THE MIGHTY MO 6 ENHANCED CABLE MANAGEMENT SYSTEM

- Value combination of the MM6E rack and the Q-Series Managers provides a 35% cost savings in specific configurations
- 1500 lbs load rating in a value-oriented channel rack
- Single person assembly of entire system
- Flexibility to meet all your building network needs
- Rack and manager sizes perfect for small networks
- Ideal for mixed use commercial installations
- Clean new aesthetic design

Mighty Mo 6 Enhanced and Q-Series Vertical Manager Facts and Features

- 1500 Lb load rating on all versions per UL2416 static
- Snap fit 3-piece waterfall on rack
- Cable Hive sidewalls increase cable bundle capabilities and provide air pathways for side exhaust equipment
- Lightweight racks and managers, easy to store
- Instant bonding of all rack parts with integrated bonding spikes
- Easy snap fit tool-less assembly of the managers
- Easily mount Q-Series vertical manager with hanging brackets
- Large capacity managers
- Cables can be secured to the rear of the manager as well as inside the manager
- Optional bend limiting/cable retention clip provides separation of copper and fiber within the same manager



**Q-SERIES VERTICAL MANAGERS ▶
ON MM6 ENHANCED RACK**

designed to be better.™