

# ES SERIES SHADE SYSTEM

## ES/RD 4 INCH SERIES

A complete motorized and banded shading solution

Seamless integration with Wattstopper Lighting Control and Integration Systems



The ES line has a number of universal and modular bracket and fascia options to meet any motorized shading application

### DESCRIPTION

The Legrand Shading Systems ES motorized operated roller shade is an extremely flexible shade solution for single, dual, coupled, and oversized motorized shades. The ES series hardware provides a series of different sized brackets and coupler combinations that allow for standalone and coupled shades for straight, curved, or even 90 degree windows for nearly any sized shade. The motors can operate independently with local controls or together with a Wattstopper lighting control system to provide integrated and automated system control with lighting.

### OPERATION

The 4 inch series offers universal mount brackets for a variety of motor options and mounting. Support for a wide range of coupling options allows multiple shades to be motorized with a single drive to reduce cost and installation time. All couplers are adjustable allowing installers to adjust shades and light gaps in the field.

All Legrand motorized shades, whether they are DC or AC, are available as a standalone system or as part of a fully automated system using any Legrand lighting control solution.

The added benefits of combining the lighting controls with shading allows for shading and lighting control to operate in parallel to increase energy efficiency and occupant comfort. When combined with Wattstopper Lighting control systems the ES motorized shades offer true shade and lighting automation using astronomic timers and sensors.

### APPLICATIONS

The complete ES shade series has motorized shade products for a wide range of applications from Education, Healthcare, to Commercial Office spaces. ES series shades are ideal for projects requiring a complete roller shade solution that encompasses motorized shades that are standalone or coupled. When coupled, a single drive is used to control up to 6 shade bands allowing for significantly lower drive counts on projects when value engineering is required. Dual shades allow for a room darkening shade and solar shade to be mounted in the same window. Both single and dual shades can be coupled with coupling options for windows with a wide range of angles (up to 90 degrees) or even through mullions. There are a number of flexible options for fascia, side channels, and sill rails for room darkening and aesthetics.

**NOTE:** Number of shade bands varies depending on shade size.

### FEATURES

- Available with all motorized roller shade features needed for any commercial project
- Programmable top and bottom limits
- Integration with Wattstopper for control of lighting and shading on a single system.
- BMS compatible using BACnet over IP
- Aluminum tubes: no rust stains on the fabric from high humidity locations
- Mechanically fastened fascia provides increased safety for commercial applications vs clipped or hung fascia
- Individual Shades in the 4 inch series cover windows up 120 inches wide by 200 inches tall or 130 inches wide by 145 inches tall
- Minimal Light gaps ranging from 1" to 1 3/4"
- Side Channels and sill rails available
- Fascia options: choose open roll, or 4, 5, or 6 inch fascia options in the color options listed on the following page for single, dual shades and includes back fascia options. Fascia can be joined into various combinations up to 12 inches
- End plate options for fascia combination of 4, 5, 6, 8, 10, and 12 inch fascia. Plates are available in all 9 color options
- Multiple hembar options
- Shade Bands: See Shade Sizing Chart on page 3, Coupling for up to 6 banded shades
- Covered by Legrand Shading systems standard 25 year limited warranty

PROJECT

LOCATION/  
TYPE

## OPTIONS

Legrand offers a wide range of performance fabrics in different colors, weaves, and price points to make it easy to choose the right shade for your application. Our fabrics are made by leading manufacturers like Phifer and Mermet. We offer numerous environmentally friendly fabrics that are GREENGUARD certified, PVC free, or Cradle-to-Cradle certified. We have fabrics infused with Microban to inhibit the growth of bacteria, mold and mildew that can cause stains, odors and degradation of the fabric. All commercial fabrics are fire rated and carry industry certifications as required by the most stringent of specifications.

**Solar Screens** - Legrand offers a collection of fabric screens that allow a wide range of view-through and light management options. We offer fabrics with fiberglass and polyester cores, and others coated with PVC or other materials to offer precise light management.

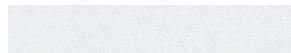
**Sustainable Solar Screens** - For projects where environmentally conscious requirements are specified. Sustainable options include Cradle to Cradle Certified, PVC-free and 100% recyclable materials incorporated in high quality durable fabrics that still perform as required

**Room Darkening Fabrics** - A selection of opaque fabrics to block daylight. These materials may be combined with side channels and sill rails to further control light in the space.

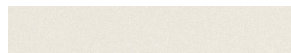
**Commercial Decorative Fabrics** - This collection of commercially compliant fabrics provides aesthetic options for projects where design is an important element.

### Fascia & Hembar Finishes\*

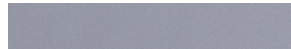
Gloss White



Beige



Dark Gray



Black



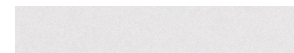
Clear Anodized



Light Bronze



Ceiling White



Charcoal



Dark Bronze



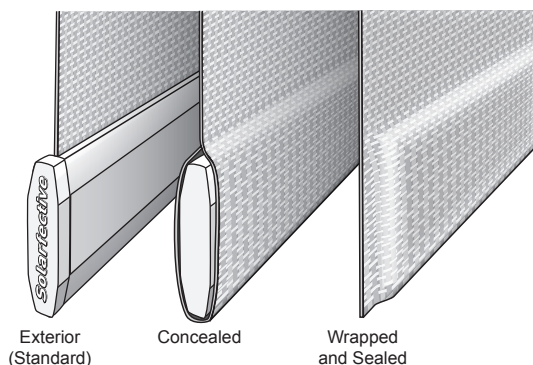
\*Side and bottom channel models available, in the color finishes noted for Fascia and Hembar.

### Fascia Options

4", 5", 6", and Joined Fascia options, Back Fascia

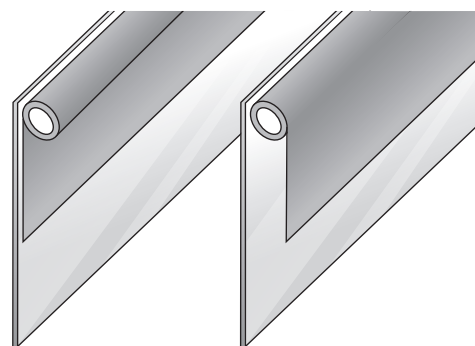
## SHADE OPTIONS

### Hembar



**NOTE:** Concealed and Wrapped & Sealed options available for AC Drive models only

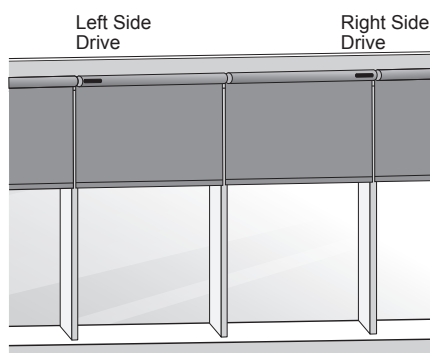
### Fabric Drop



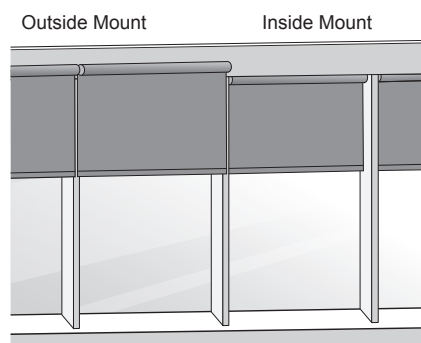
Standard Roll

Reverse Roll

### Drive Side



### Mounting

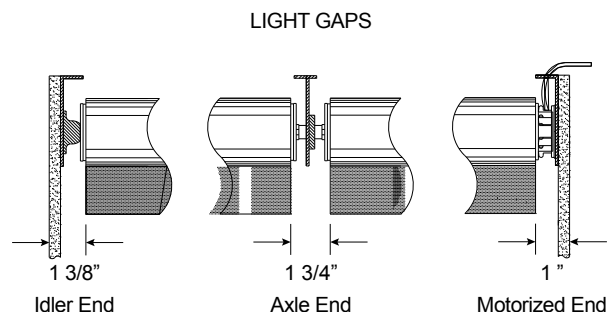


## 4 INCH ES SYSTEM

The 4 inch ES series system offers compact brackets and couplers for smaller motorized and coupled shades and tight installation spaces.

### Height and Width limitations and Light Gaps for ES 4 inch ES System shades

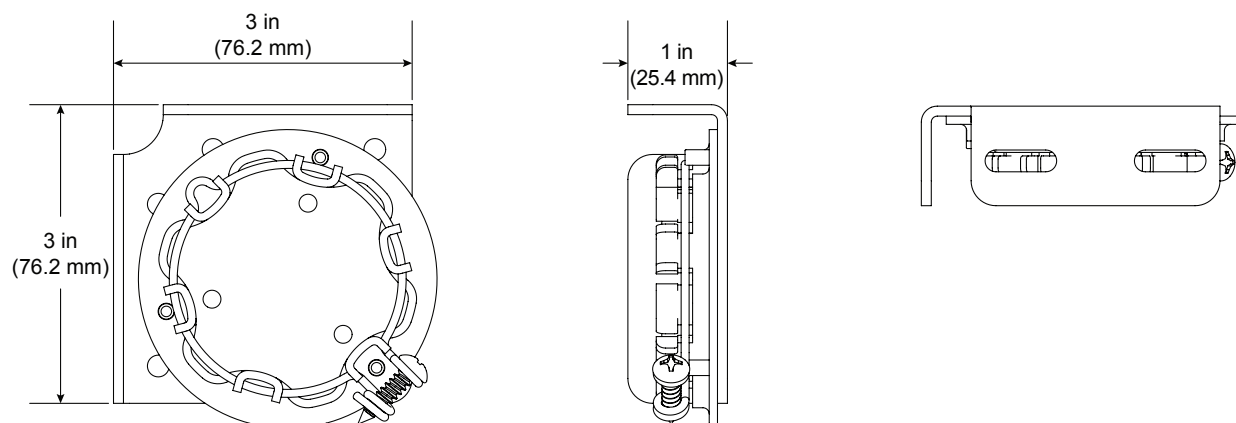
Max Width (inches)	Max. Height (inches)	Max. Height (ft.)	Fabric Type
130	120	10	Polyester
130	200	16.7	Blackout
130	150	12.5	Fiberglass



## 4 INCH ES SYSTEM BRACKET DIMENSIONS AND OPTIONS

Slotted mounting holes and universal brackets provide many mounting options with up to ¼ adjustability.

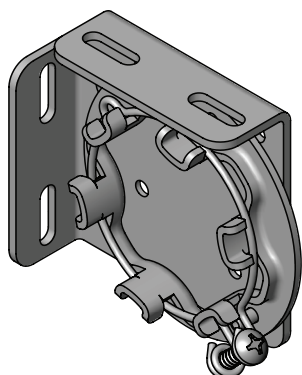
### Bracket Dimensions



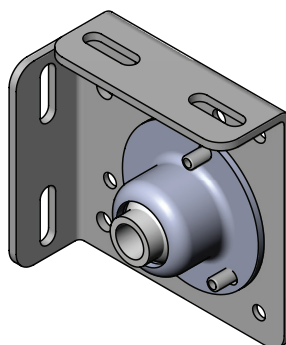
**NOTE:** Dimensions are identical for all 3 inch brackets, idlers, and couplers.

### Standard Motor, Idler, and Coupler Brackets

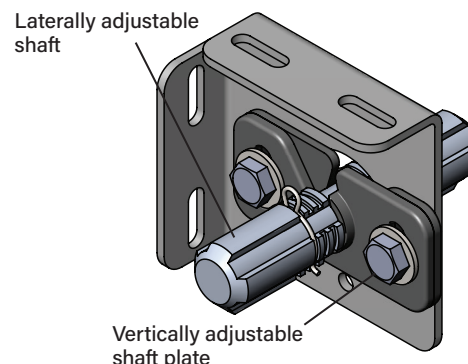
Star Head Motor Bracket



Idler Bracket



Standard Coupler Bracket



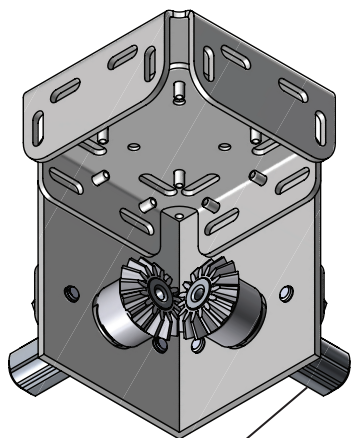
**NOTE:** Motor and Idler brackets come in left and right versions to provide optimal motor placement options.

Up to 1/8" lateral and 1/4" vertical adjustment to adjust for installation and light gaps

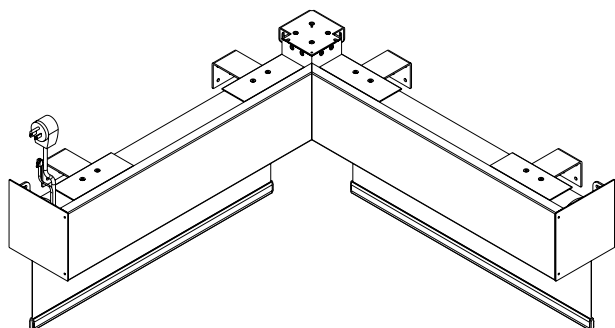
## ADJUSTABLE COUPLER AND IDLER OPTIONS

### 90 Degree Coupler for Corner Mount Banded Shades.

Offers up to 1/8" lateral and 1/4" vertical adjustment to adjust for installation and light gaps



Vertically and Laterally adjustable shaft



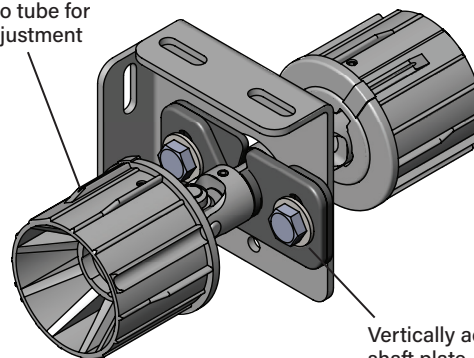
### Standard 4 Inch Fascia System

Fascia is pressfit, but for a secure connection it is strongly recommended to secure the fascia with self tapping #8, 3/4" screws at both ends and every connection. See assembly drawings on follow page.

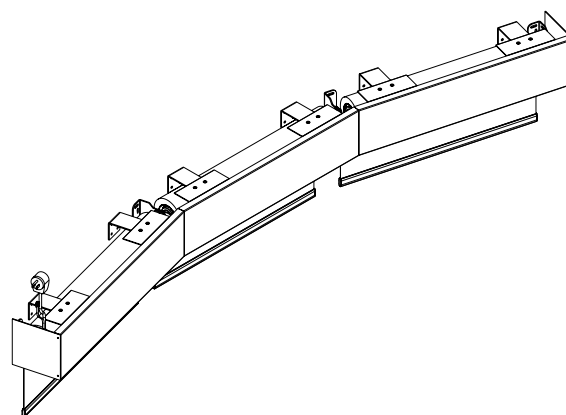
### Flexible Axle Coupler for Window and Wall Curves less than 45 Degrees.

Offers up to 1/8" lateral and 1/4" vertical adjustment to adjust for installation and light gaps

Slides into tube for lateral adjustment



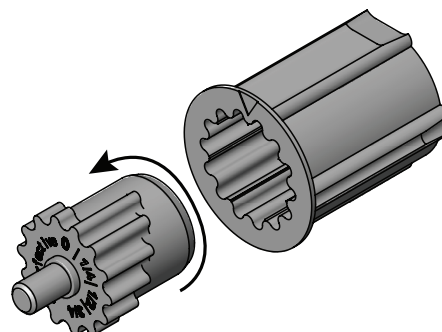
Vertically adjustable shaft plate



**NOTE:** Fascia can be custom mitered to the exact specifications of the window curve.

### Adjustable Idler

Allows adjustment of idler depth from 0 to 3/4", in 1/8" increments



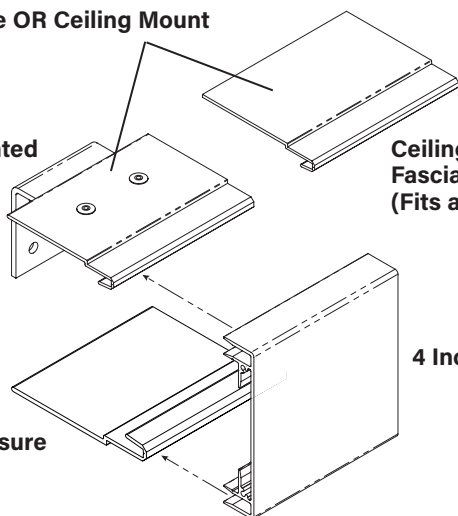
### Face OR Ceiling Mount

4 Inch Face Mounted Fascia Hanger

Ceiling Mounted Fascia Hanger (Fits all Shade Sizes)

4 Inch Fascia

2 5/8 Inch Closure



## MOUNTING INFORMATION AND DIMENSIONS

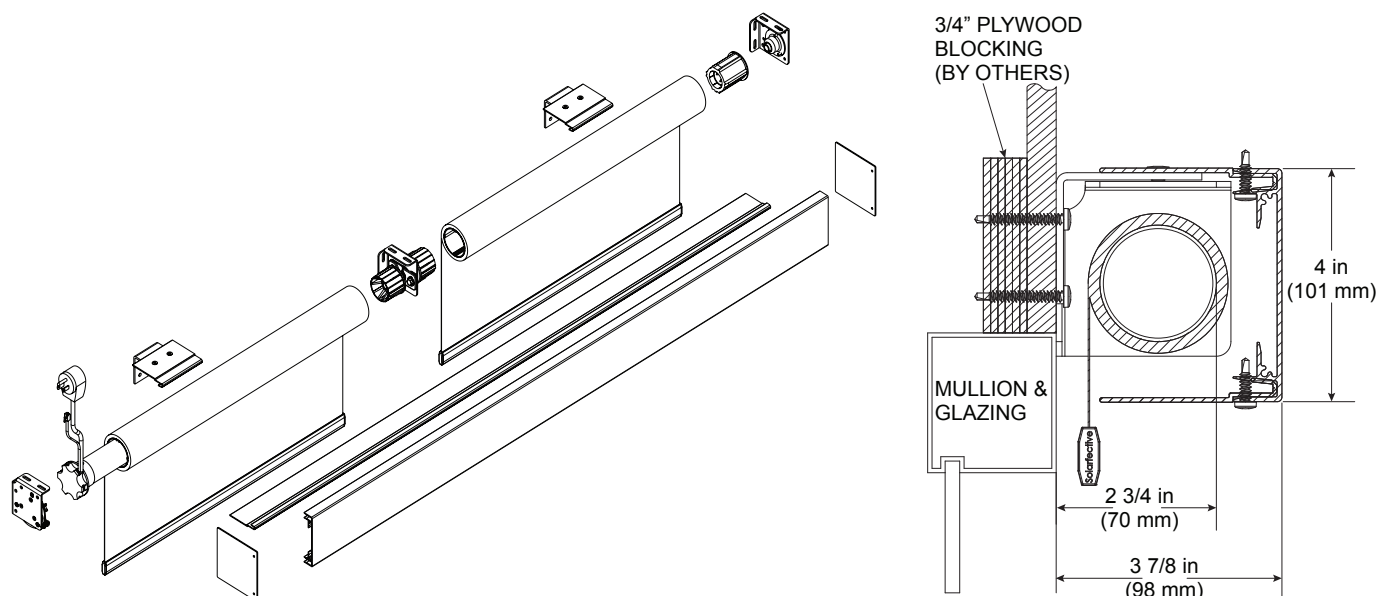
The following drawings provide examples of mounting and dimensions for the 4 inch Inch SF-ESxx configurations.

**NOTE:** Corresponding models of Room Darkening shades (SF-RDxx models) have the same dimensions. Dimensions for the side and bottom channels included at the end of this section. Detailed sectional drawings are also available at <https://legrand.us/shading-systems/commercial-roller-shades/motorized/es-series-motorized-shades/p/es-motorized>

**NOTE:** Recommended screws for brackets: #8 x 1 1/2" - 4" flat head for wood screws and #8 x 1" - 2 1/2" pan or flat head self tap screws for metal (not included with shade)

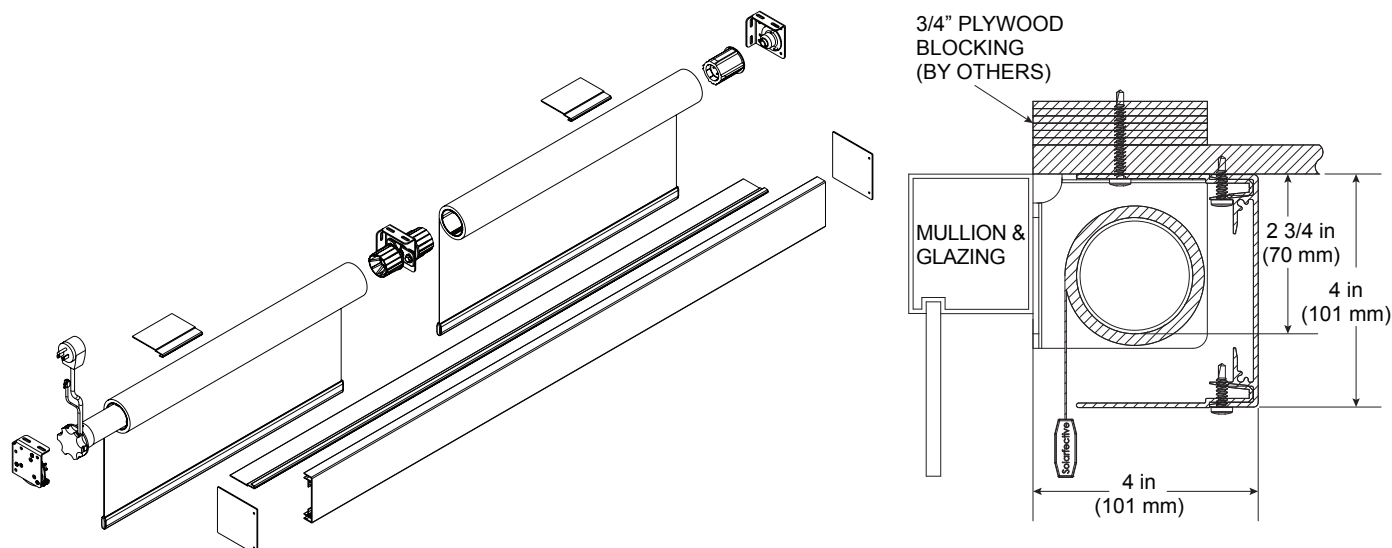
## SF-ES10

Face mount 3 inch brackets with 4 inch fascia with closure

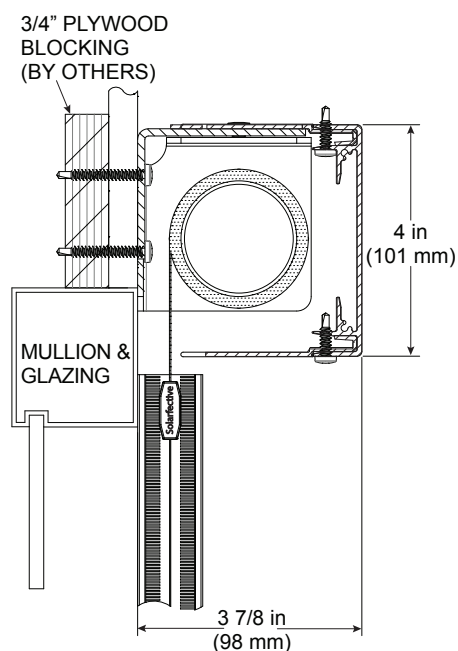
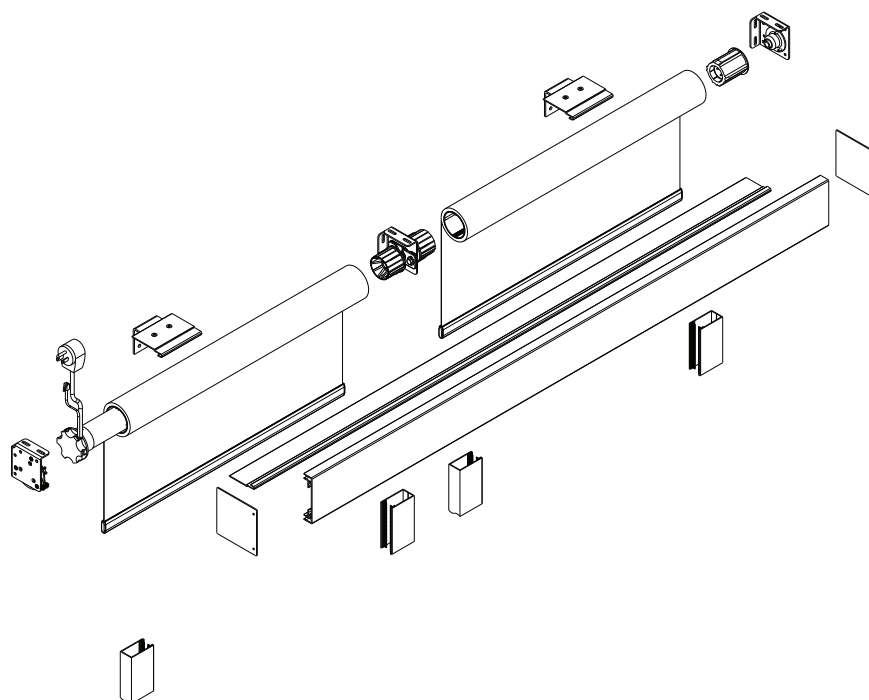


## SF-ES11

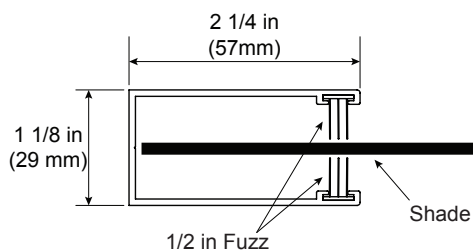
Ceiling mount 3 inch brackets with 4 inch fascia with closure



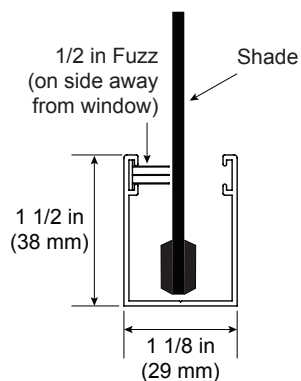
SF-RD Models – Similar in configuration to regular ES models, these models add Room Darkening elements (side channels and sill angles)



Side Channel



Sill Rail



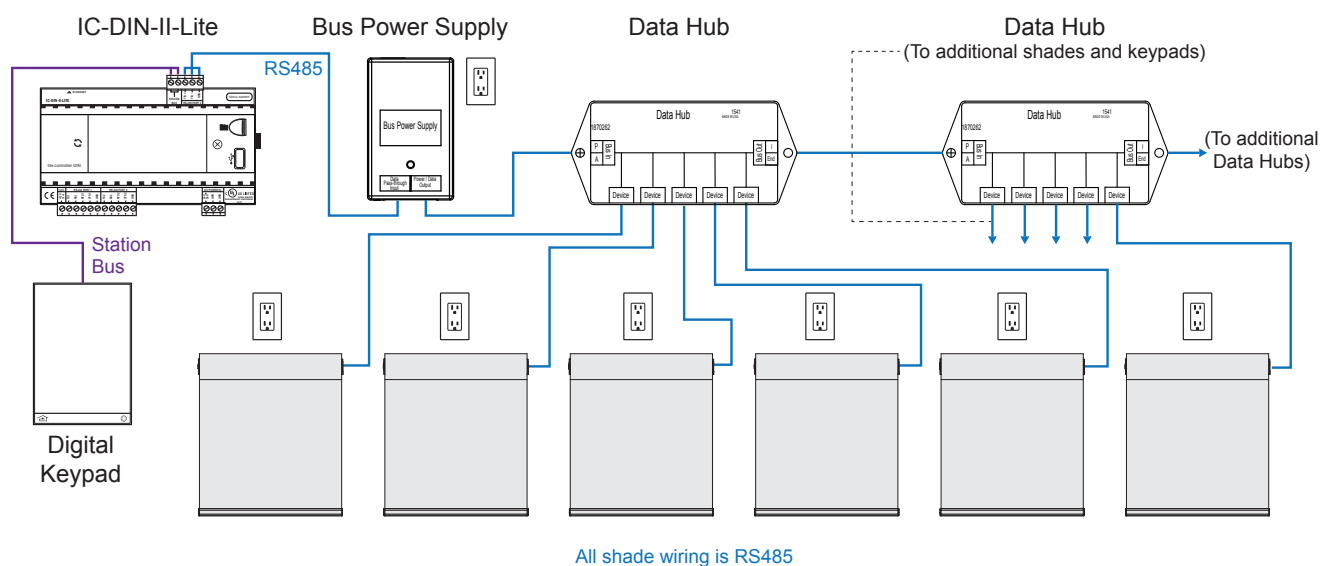
**NOTE:** Works with any hembar option



## WIRING AND CONNECTION DIAGRAMS

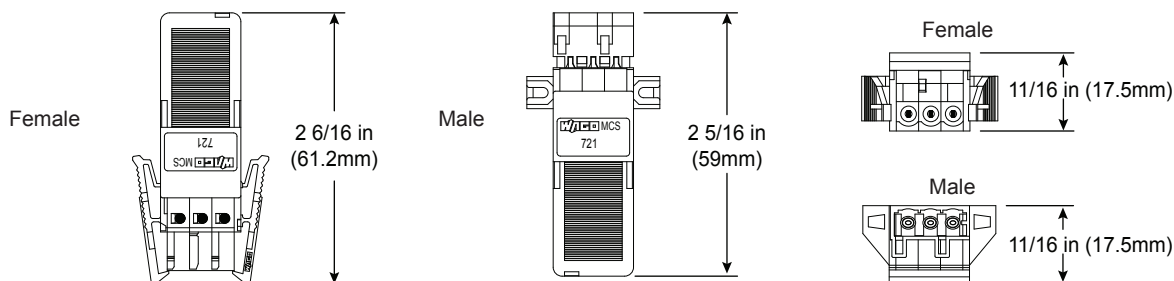
### AC System

AC Drive basic wiring configuration and integration diagram (See AC drive specific cutsheet for more information)



### WAGO Connector Dimensions

**NOTE:** Shades come standard with 6ft long power cable and 3 prong plug. Optional 3 ft, 12 ft, 18 ft, 24 ft lengths with WAGO connectors available



### AC Motor Specifications

For AC shade motor system use Somfy ILT or Sonesse 50 RS485 shade motor specifications

## ORDERING INFORMATION

Catalog #	Description
<b>ES Shade System Without Blackout Channels</b>	
<input type="checkbox"/> SF-ES10	ES Shade System with Face Mount 4" Fascia
<input type="checkbox"/> SF-ES11	ES Shade System with Ceiling Mount 4" Fascia
<b>ES Shade System With Blackout Channels</b>	
<input type="checkbox"/> SF-RD16	ES Shade System with Face Mount 4" Fascia, Side and Bottom Channels
<input type="checkbox"/> SF-RD17	ES Shade System with Ceiling Mount 4" Fascia, Side and Bottom Channels