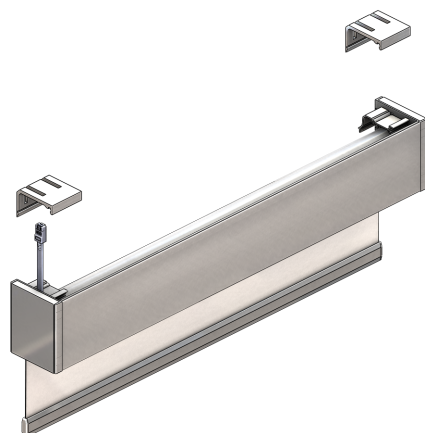


# TS SERIES MOTORIZED SHADES

SF-T7M/TQ7M, SF-10M/TQ10M

Factory configured shade cassette system allows for quick and easy shade installation, reduces installation cost, and common mistakes

Seamless integration with Wattstopper Control Systems



Heavy-duty bracket system provides up to 66% installation efficiencies compared to non-cassette roller shades

Many options, including single and dual shade with standard and reverse roll, pockets, room darkening, and multiple manual control options

## DESCRIPTION

Legrand Shading Systems Teleshade (TS) motorized roller shade cassette system is a factory configured shade that provides easy to install shades with enhanced control features. The shades and large selection of fabric options provide glare control and allow occupants to access daylight and views. The motorized TS system is offered as both a DC and AC motorized solution. Our DC motorized system allows for increased installation efficiencies with low cost Cat5e wiring and reduction of line voltage infrastructure over AC motors. The patented whisper quiet motor system is completely concealed inside the counter-balanced shade tube and offers the unique advantages of extremely low power consumption and manual override. DC motors are used in shades up to 120 in x 120 in.

## OPERATION

The TS series has a wide range of configurations including single and dual shades with a variety of roll and channel options. The DC drive system reduces installation costs while offering Legrand exclusive operating features such as manual override. Manual override offers the additional ability to control shades through a sequence of pulls on shade hembars. Manual override will not damage the shade motor.

In addition, all motorized shades, whether they are DC or AC, are available as a standalone system or as part of a fully automated system using any Legrand lighting control solution. The added benefits of combining the lighting controls with shading allows for shading and lighting control to operate in parallel to increase energy efficiency and occupant comfort.

## APPLICATIONS

The complete Teleshade (TS) shade series has manual and motorized shade products for a wide range of applications from Education, Healthcare, to Commercial Office spaces. The cassette system speeds installation by up to 66% with various pre-configured options.

The TS shade series offers a wide range of configuration options not found on many shade systems including factory configured pockets and even venting pockets to remove window heat build-up from conditioned spaces. The TS series has both manual shade and a variety of motorized shade options in a matching roller shade cassette system for easy installation and out-of-the-box operation.

PROJECT

LOCATION/  
TYPE

## FEATURES

- Available with all roller shade features needed for any commercial project
- DC motor is used on individual shades up to 120 in wide by 120 in tall. AC motor option for larger shades
- Near silent operation DC motor (<38dbA)
- Patented no-damage manual tug control of shades
- Digital bidirectional communication
- Seamless integration with Wattstopper Lighting Control Systems for daylighting and automation control. Allows shades to join the BMS system using BACnet over IP.
- 98 programmable intermediate shade positions
- Aluminum tubes: no rust stains on the fabric from high humidity locations
- Programmable top and bottom limits
- Encoder based drive for precise positioning within +/- 1/16 in
- Light gap – 7/8 inch symmetrical light gaps
- Side Channels and Sill Rails available.
- Fascia options: for single, dual shades and includes back fascia
- Multiple hembar options
- Factory tested and shimmed
- For additional mounting flexibility five additional bracket options are available for various side and top mount applications.
- Legrand Shading Systems standard 25 year limited hardware warranty

## SPECIFICATIONS

- Operating Temperature: 32F to 122F (0C to 50C) (Interior use only)
- Power supply: 24 VDC, 7.5 amps
- Limit Switch Type: Electronic
- Motorized with counterbalanced modular spring assemblies
- Wiring: Cat5 e/Cat6 from each shade to shade power and distribution panel.
- Shades come standard with either 6 in or 35 in cable from shade end to connector
- See TS Series Motorized shade installation instructions for more specifications including wiring specifications

## OPTIONS

Legrand offers a wide range of performance fabrics in different colors, weaves, and price points to make it easy to choose the right shade for your application. Our fabrics are made by leading manufacturers like Phifer and Mermet. We offer numerous environmentally friendly fabrics that are GREENGUARD certified, PVC free, or Cradle-to-Cradle certified. We have fabrics infused with Microban to inhibit the growth of bacteria, mold and mildew that can cause stains, odors and degradation of the fabric. All commercial fabrics are fire rated and carry industry certifications as required by the most stringent of specifications.

**Solar Screens** - Legrand offers a collection of fabric screens that allow a wide range of view-through and light management options. We offer fabrics with fiberglass and polyester cores, and others coated with PVC or other materials to offer precise light management.

**Sustainable Solar Screens** - For projects where environmentally conscious requirements are specified. Sustainable options include Cradle to Cradle Certified, PVC-free and 100% recyclable materials incorporated in high quality durable fabrics that still perform as required

**Room Darkening Fabrics** - A selection of opaque fabrics to block daylight. These materials may be combined with side channels and sill rails to further control light in the space.

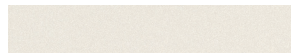
**Commercial Decorative Fabrics** - This collection of commercially compliant fabrics provides aesthetic options for projects where design is an important element.

### Fascia & Hembar Finishes\*

Gloss White



Beige



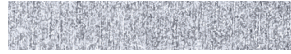
Dark Gray



Black



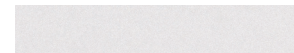
Clear Anodized



Light Bronze



Ceiling White



Charcoal



Dark Bronze



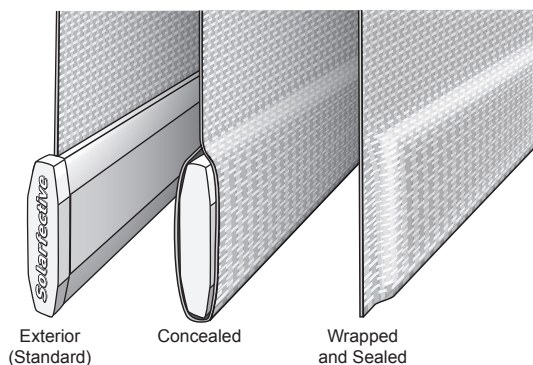
\*Side and bottom channel models available, in the color finishes noted for Fascia and Hembar.

### Fascia Options

4 in and 5 in Aluminum Fascia, Back Fascia

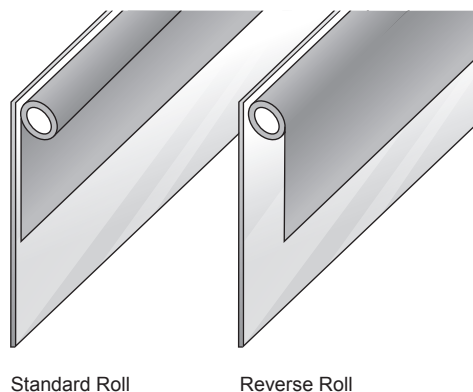
## SHADE OPTIONS

### Hembar

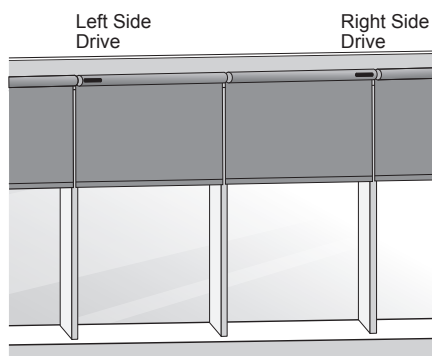


**NOTE:** Concealed and Wrapped & Sealed options available for AC Drive models only

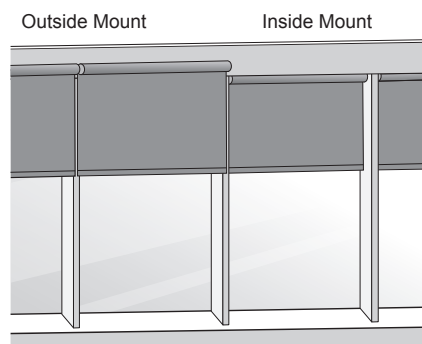
### Fabric Drop



### Drive Side



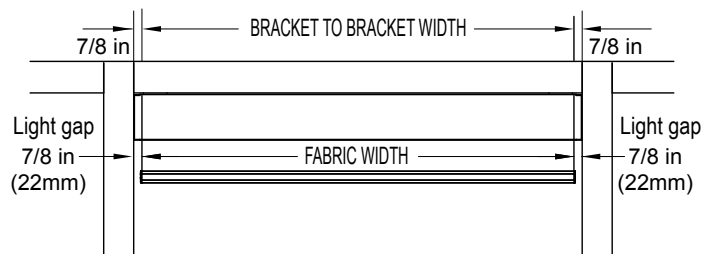
### Mounting



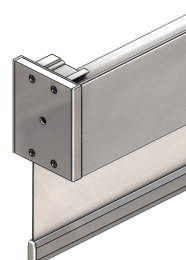
## MOUNTING INFORMATION AND DIMENSIONS

**NOTE:** Recommended: #8 x 1 1/2" - 4" flat head for wood screws and #8 x 1" - 2 1/2" pan or flat head self tap screws for metal (not included with shade)

### Teleshade System Dimensions

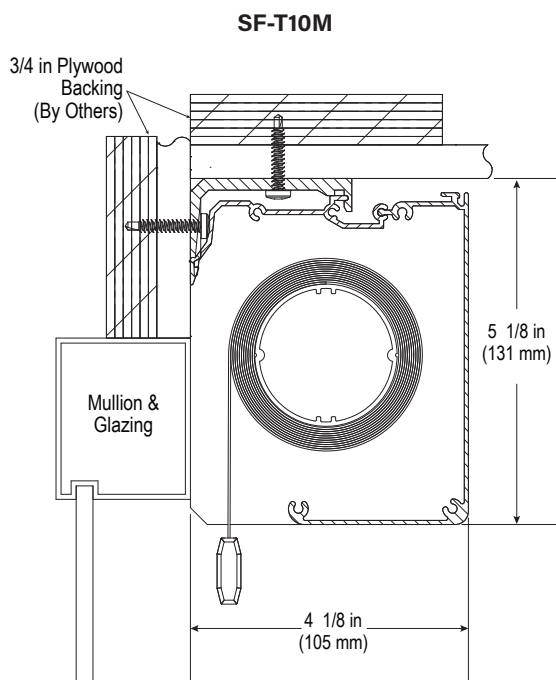
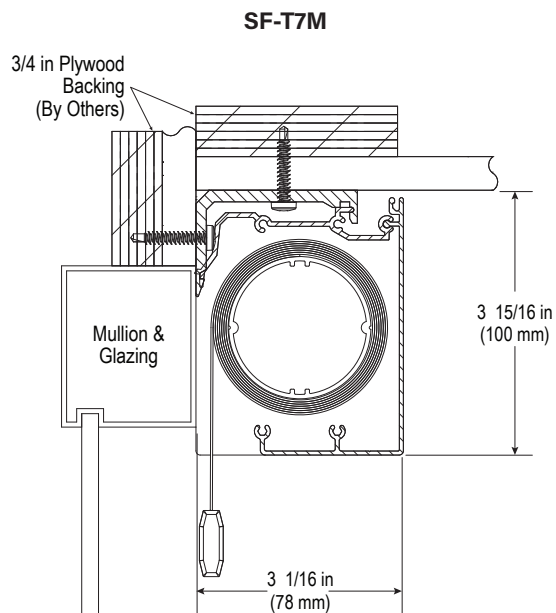
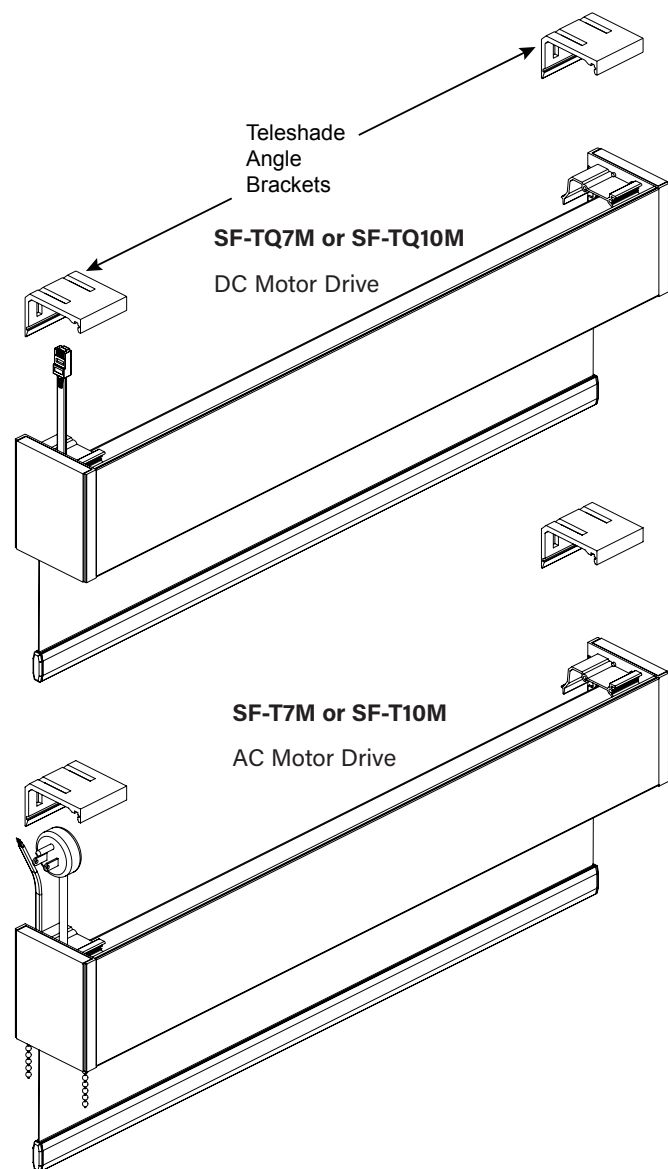


### Typical end cap detail



# T-7M/TQ-7M and T/10MTQ-10M - 4 in and 5 in Motorized Teleshade with DC or AC Drive

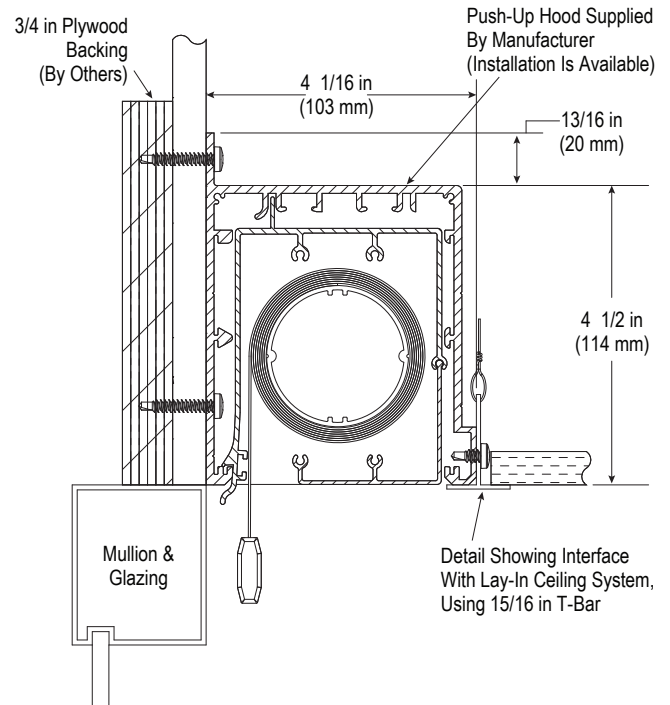
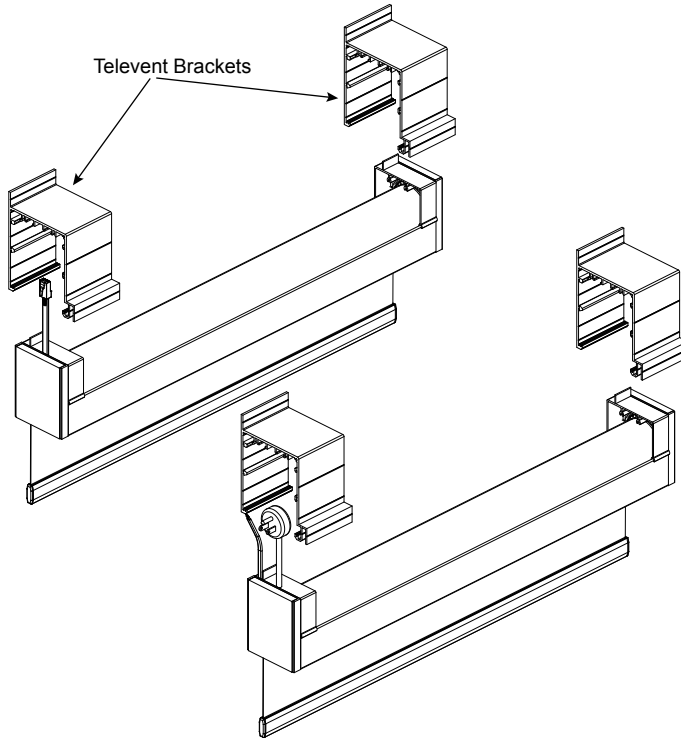
**Note:** Teleshade (TS) can be mounted with blocking on the ceiling or the wall (drawings show both options)



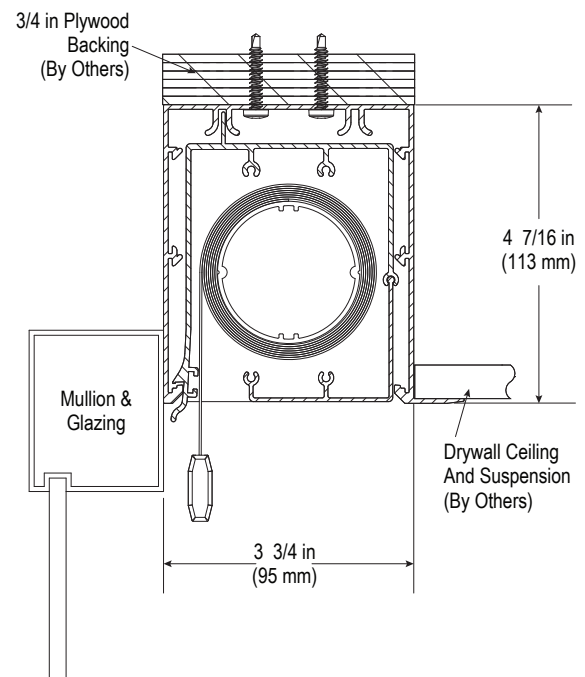
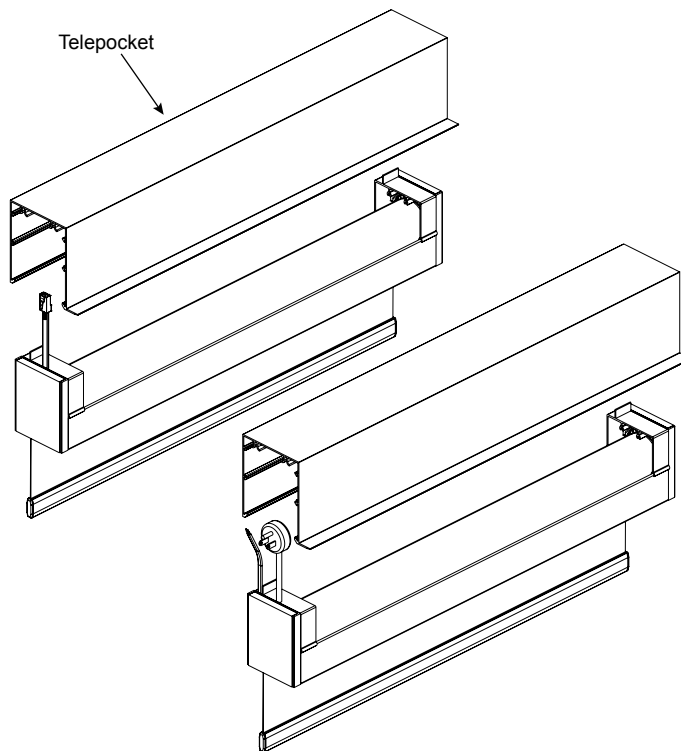
4" Teleshade size limitation 129 in (3.28 m) wide by 110 in (2.79 m) high

5" Teleshade size limitation 129 in (3.28 m) wide by 200 in (5.08 m) high

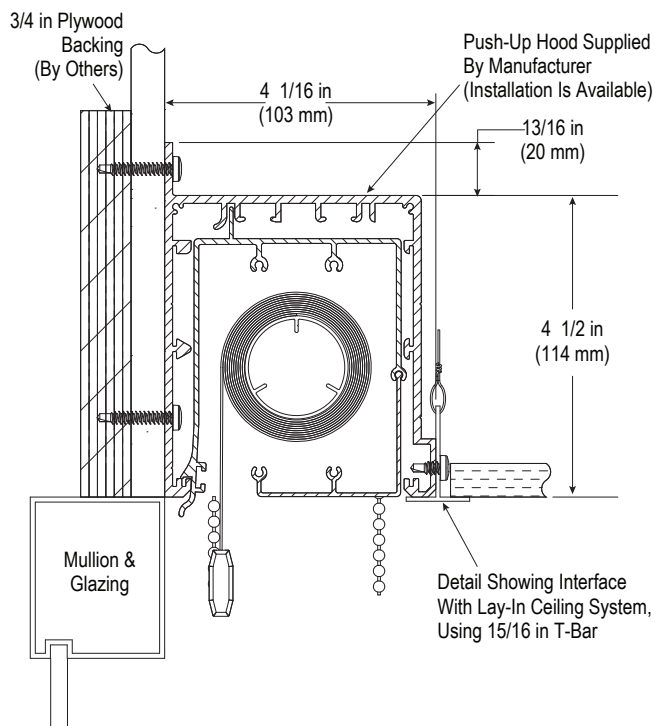
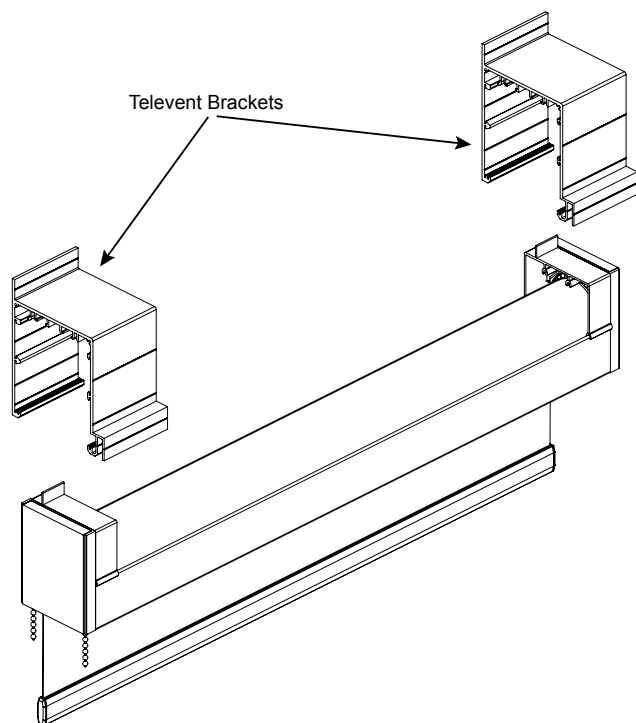
## SF-T4BM - 4 in Teleshade with Televent Pocket for Venting Window Heat to Plenum. Integrated Lip for Ceiling Tile



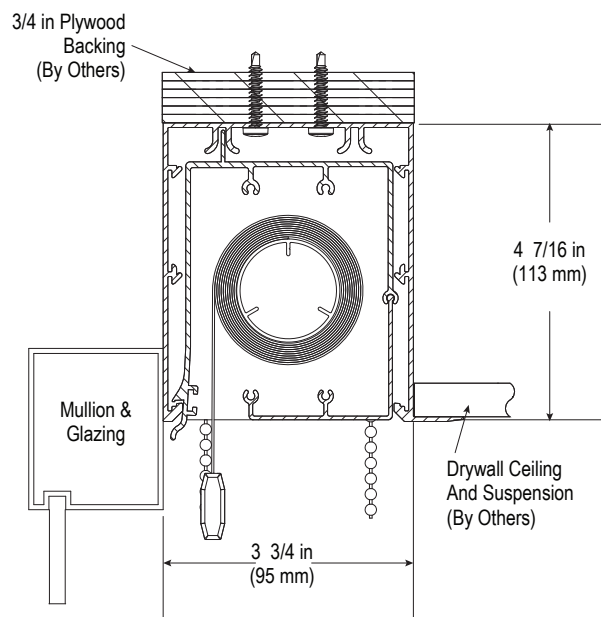
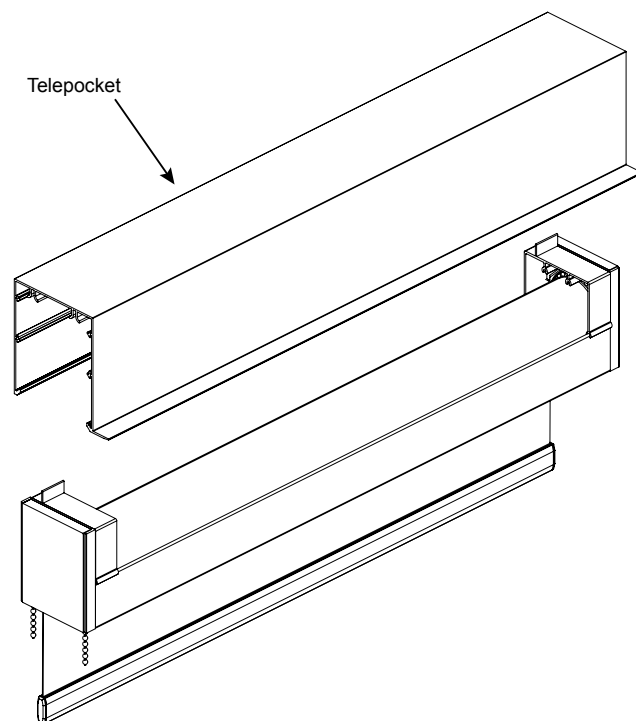
## SF-T17M - 4 in Teleshade with Telepocket. Factory Configured Pocket Extrusion that Seamlessly Integrates the Shade



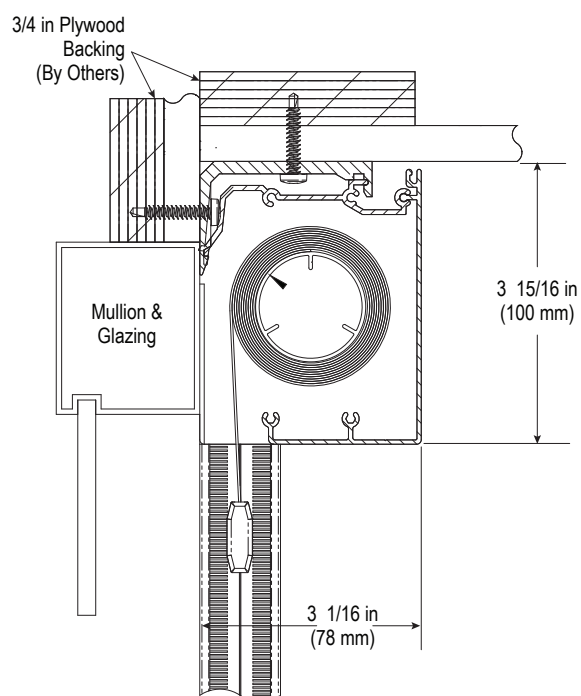
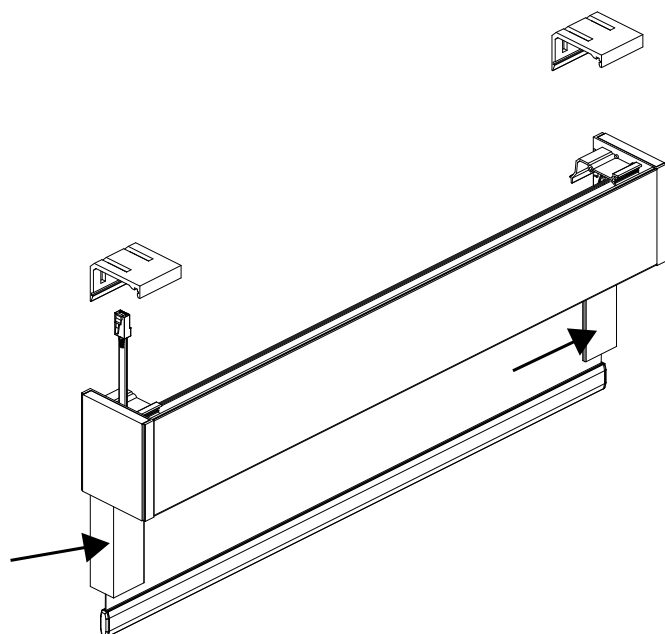
**SF-T4 - 4 in Teleshade with Televent Pocket for venting window heat to plenum. Integrated lip for ceiling tile**



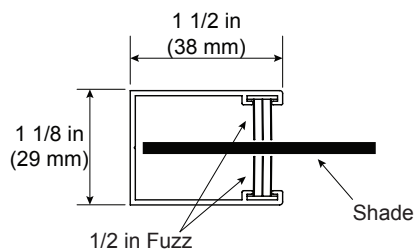
**SF-T17 - 4 in Teleshade with Telepocket. Factory configured pocket extrusion that seamlessly integrates the shade**



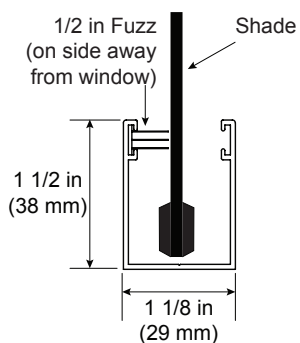
**SF-RDxx Models** - Similar in configuration to regular Teleshade models, these models add Room Darkening elements (side channels and sill angles)



**Side Channel**

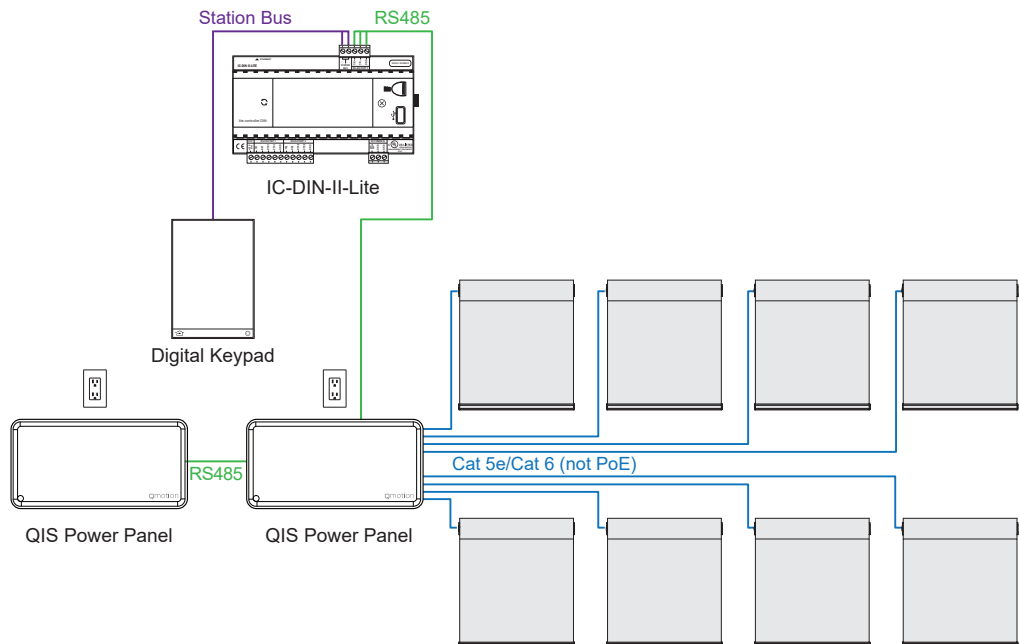
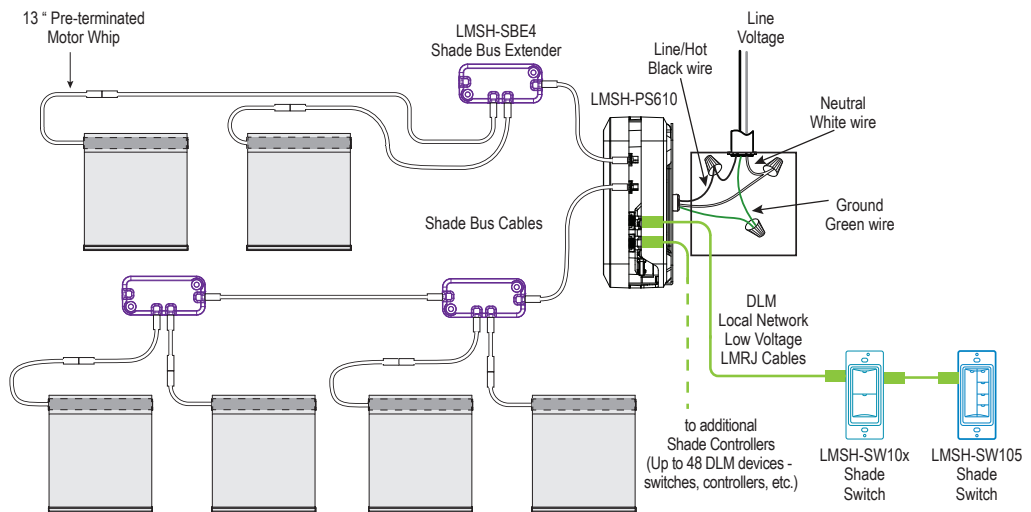


**Sill Rail**



**Note:** Works with any hembar option

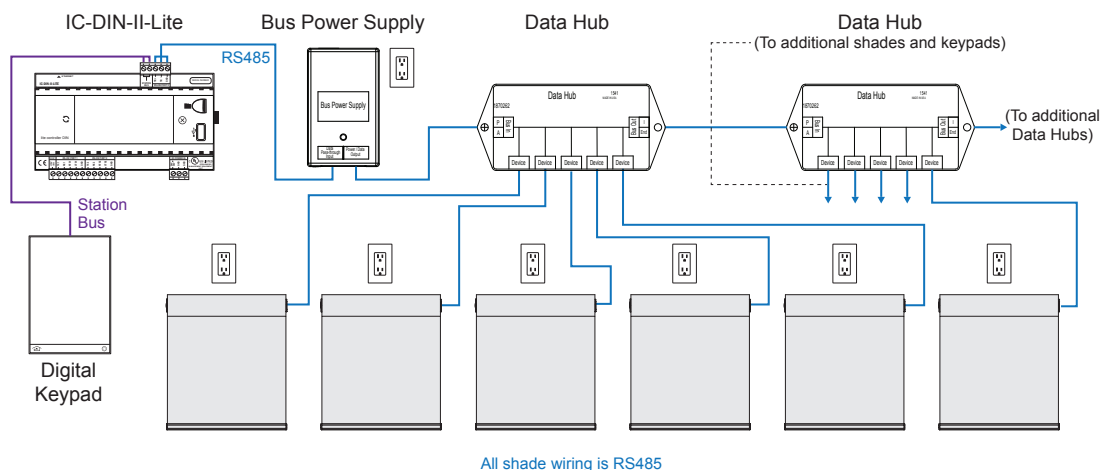
If connected to an LMSH-PS610 shade room controller, two shades can connect directly to the controller. To connect additional shades (up to 10 total), use the LMSH-SBE4 Shade Bus Extender or splitter.





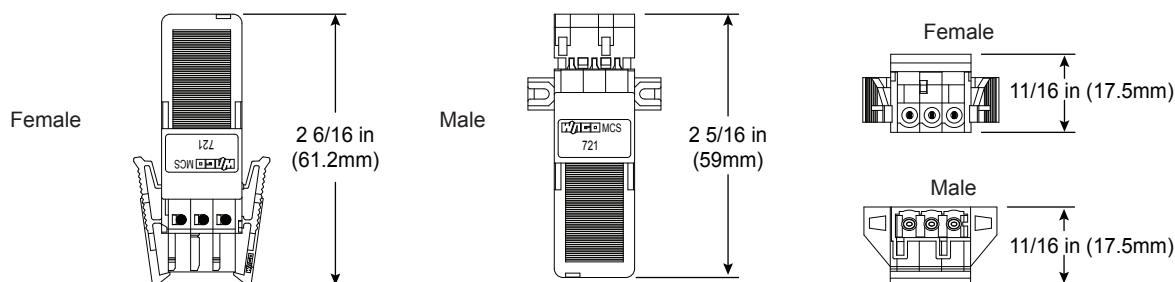
## CONNECTION WHEN USING A SOMFY AC DRIVE SHADE CONTROL SYSTEM

AC Drive basic wiring configuration and integration diagram (See AC drive specific cutsheet for more information)



### WAGO Connector Dimensions

**NOTE:** Shades come standard with 6ft long power cable and 3 prong plug. Optional 3 ft, 12 ft, 18 ft, 24 ft lengths with WAGO connectors available



## TELESHADE BASIC CONFIGURATION INFORMATION

Catalog #	Description
SF-TQ7M	4 in Motorized Teleshade cassette with DC Drive and front fascia – shade size up to 96 (2.44 m) in x 96 in (2.44 m)
SF-TQ10M	5 in Motorized Teleshade cassette with DC Drive and front fascia – shade size up to 120 in (3.05 m) x 120 in (3.05 m)
SF-T7M	4 in Motorized Teleshade cassette with AC Drive and front fascia – shade size up to 129 in (3.28 m) x 110 in (2.79 m)
SF-T10M	5 in Motorized Teleshade cassette with AC Drive and front fascia – shade size up to 129 in (3.28 m) x 200 in (5.08 m)
SF-T17M	4 in Motorized Teleshade in a Standard Pocket System
SF-T4BM	4 in Motorized Teleshade in a Vented Pocket System with Room Darkening Channels
SF-RDxx	Using an RD designation adds room darkening elements to the Teleshade configuration