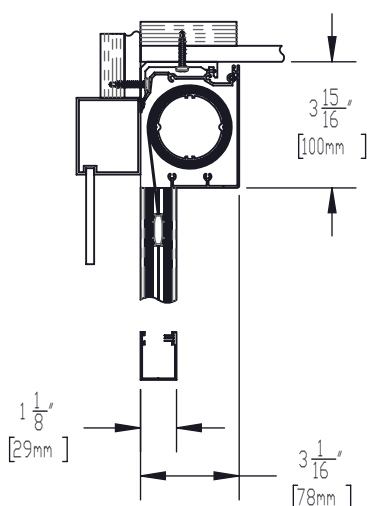
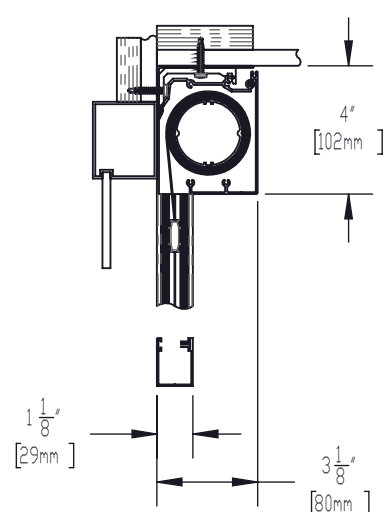


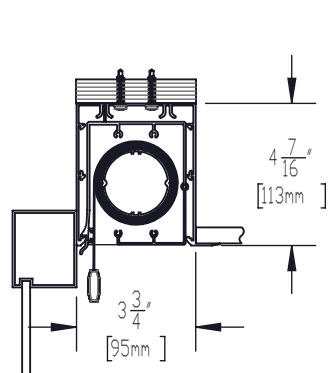
TELESHADE 4 AUTOMATED CASSETTE SYSTEM
SF-T7M/SF-TQ7M



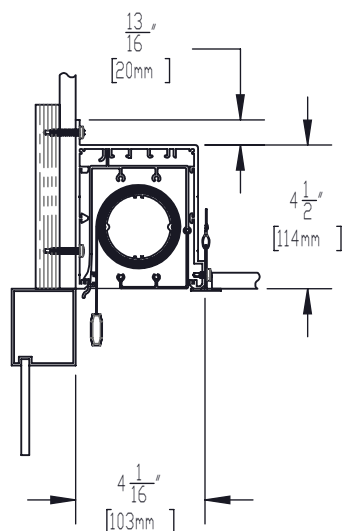
TELESHADE 4 AUTOMATED CASSETTE SYSTEM
WITH SIDE, AND BOTTOM CHANNELS
SF-RD4



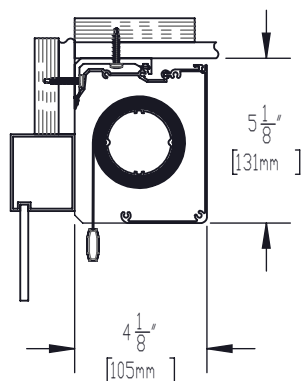
TELESHADE 4 AUTOMATED CASSETTE SYSTEM
WITH BACK FASCIA, SIDE, AND BOTTOM CHANNELS
SF-RD5



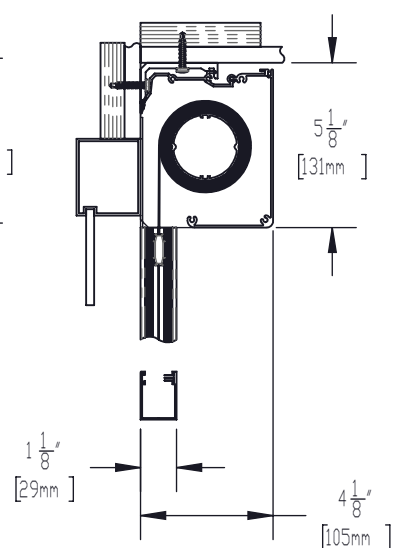
TELESHADE 4 AUTOMATED
STANDARD POCKET SYSTEM
SF-T17M



TELESHADE 4 AUTOMATED
VENTED POCKET SYSTEM
SF-4BM



TELESHADE 5 AUTOMATED
CASSETTE SYSTEM
SF-T10M/SF-TQ10M



TELESHADE 5 AUTOMATED CASSETTE
SYSTEM WITH BACK FASCIA,
SIDE AND BOTTOM CHANNELS
SF-RD13M



SOLARFECTIVE

USA Phone: 850-208-3417
Canada Phone: 416-421-3800
E-mail: sfsupport@legrand.us

TELESHADE AUTOMATED CASSETTE SYSTEM

PROJECT:

DATE:

MAR 18, 2018

SCALE:

1:6

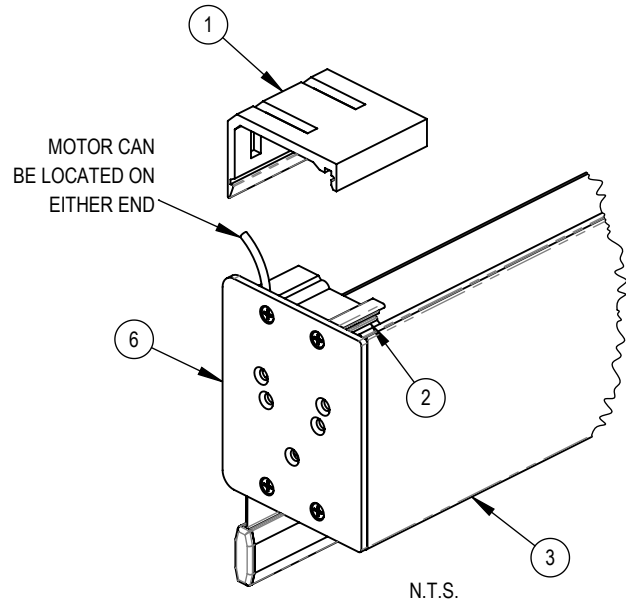
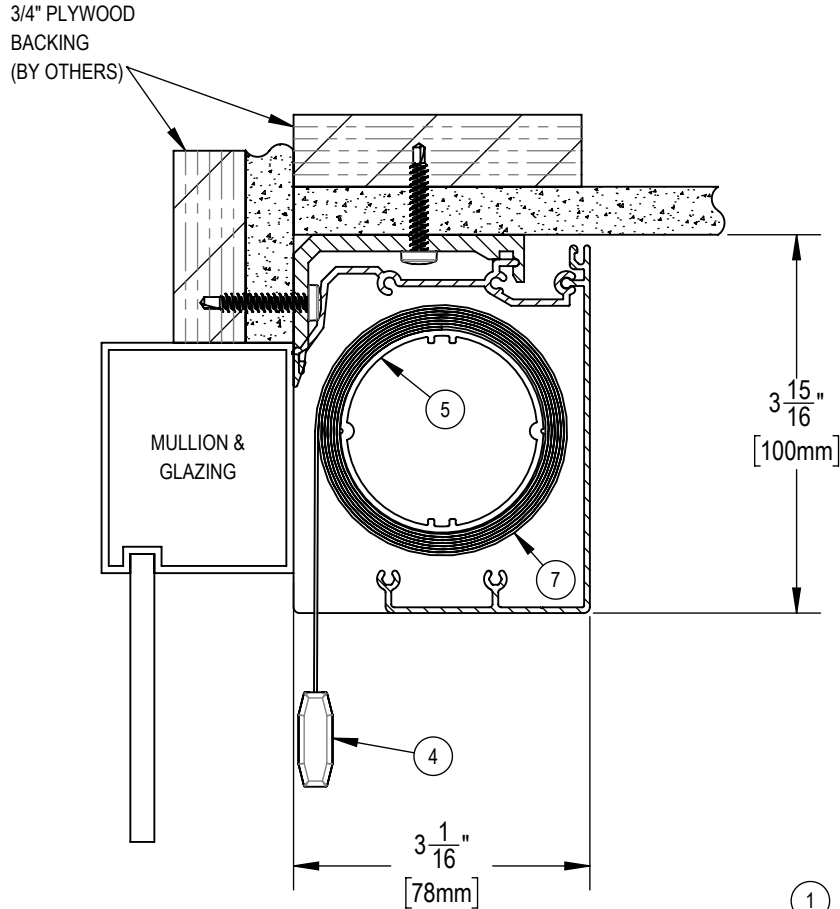
FILE No.

-

DWG. No.

SEE SHEETS

THE TELESHADE CAN BE MOUNTED
TO THE CEILING OR TO THE
FACE OF THE MULLION



NOTES:

1. MOUNTING ANGLE
2. SPRING CLIP
3. EXTRUDED ALUMINUM FASCIA
4. EXTRUDED ALUMINUM EXTERIOR HEMBAR
5. 2" ϕ EXTRUDED ALUMINUM TUBE
6. ALUMINUM END BRACKETS
7. FABRIC: 1%, 3%, 5%, 10% OPENNESS OR BLACKOUT



SOLARFECTIVE

USA Phone: 850-208-3417
Canada Phone: 416-421-3800
E-mail: sfsupport@legrand.us

TELESHADE 4 AUTOMATED CASSETTE SYSTEM

PROJECT:

DATE:

MAR 18, 2018

SCALE:

1:2

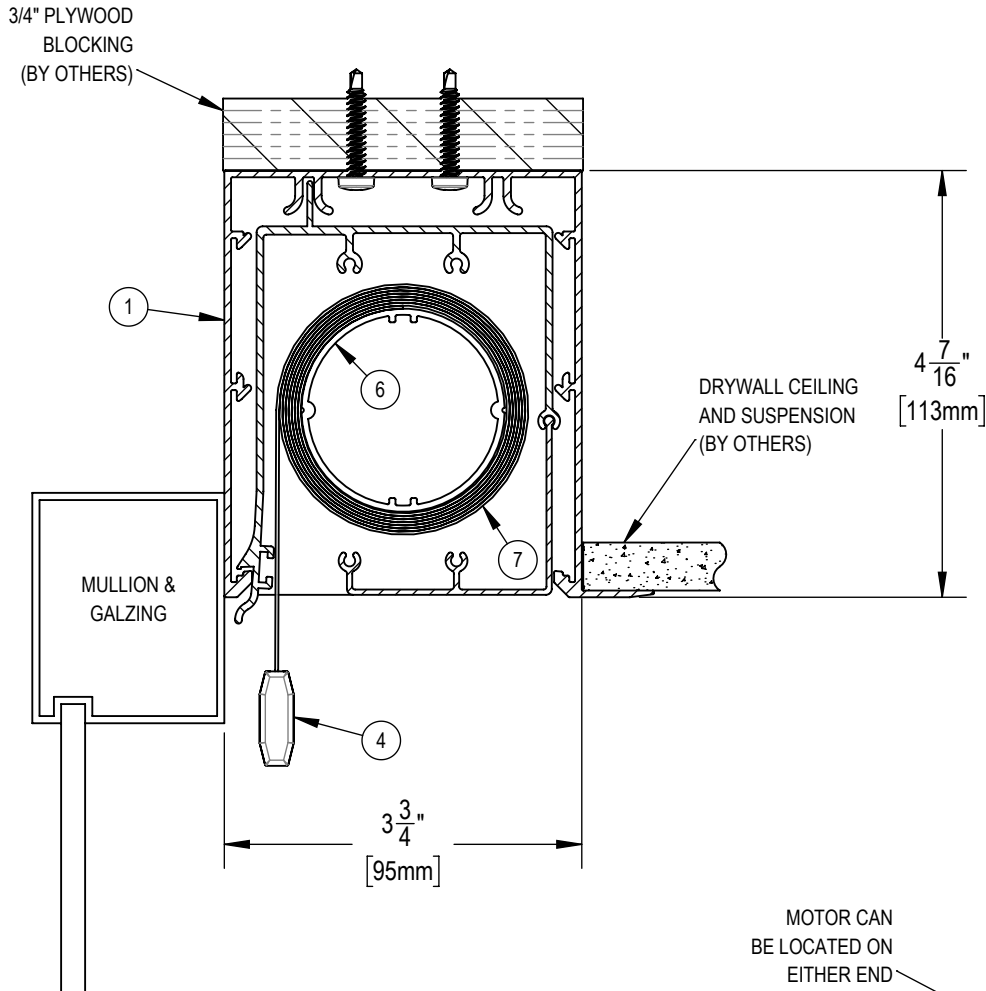
FILE No.

-

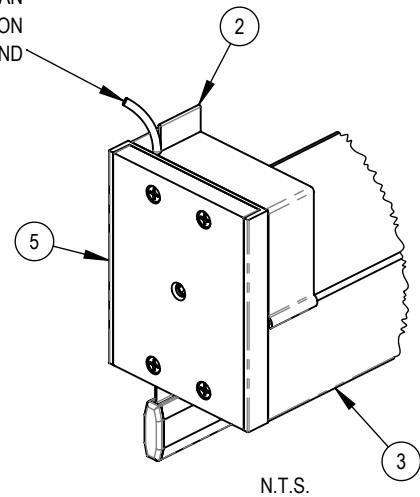
DWG. No.

SF-T7M

CONTINUOUS TELE POCKET CAN BE ADAPTED
TO ANY CEILING TYPE WHEN
SAMPLE OF CEILING SYSTEM SUPPLIED



MOTOR CAN
BE LOCATED ON
EITHER END



NOTE:
ITEM 1 REMOVED IN THIS VIEW FOR CLARITY

NOTES:

1. CONTINUOUS ALUMINUM TELE POCKET SYSTEM
2. 1" WIDE PUSH UP CLIP
3. EXTRUDED ALUMINUM HALF FASCIA
4. EXTRUDED ALUMINUM EXTERIOR HEMBAR
5. ABS END BRACKET (3 1/16" X 3 13/16")
6. 2" Ø EXTRUDED ALUMINUM TUBE
7. FABRIC: 1%, 3%, 5%, 10% OPENNESS OR BLACKOUT



SOLARFECTIVE

USA Phone: 850-208-3417
Canada Phone: 416-421-3800
E-mail: sfsupport@legrand.us

**TELESHADE 4 AUTOMATED
STANDARD POCKET SYSTEM**

PROJECT:

DATE:

MAR 18, 2018

SCALE:

1:2

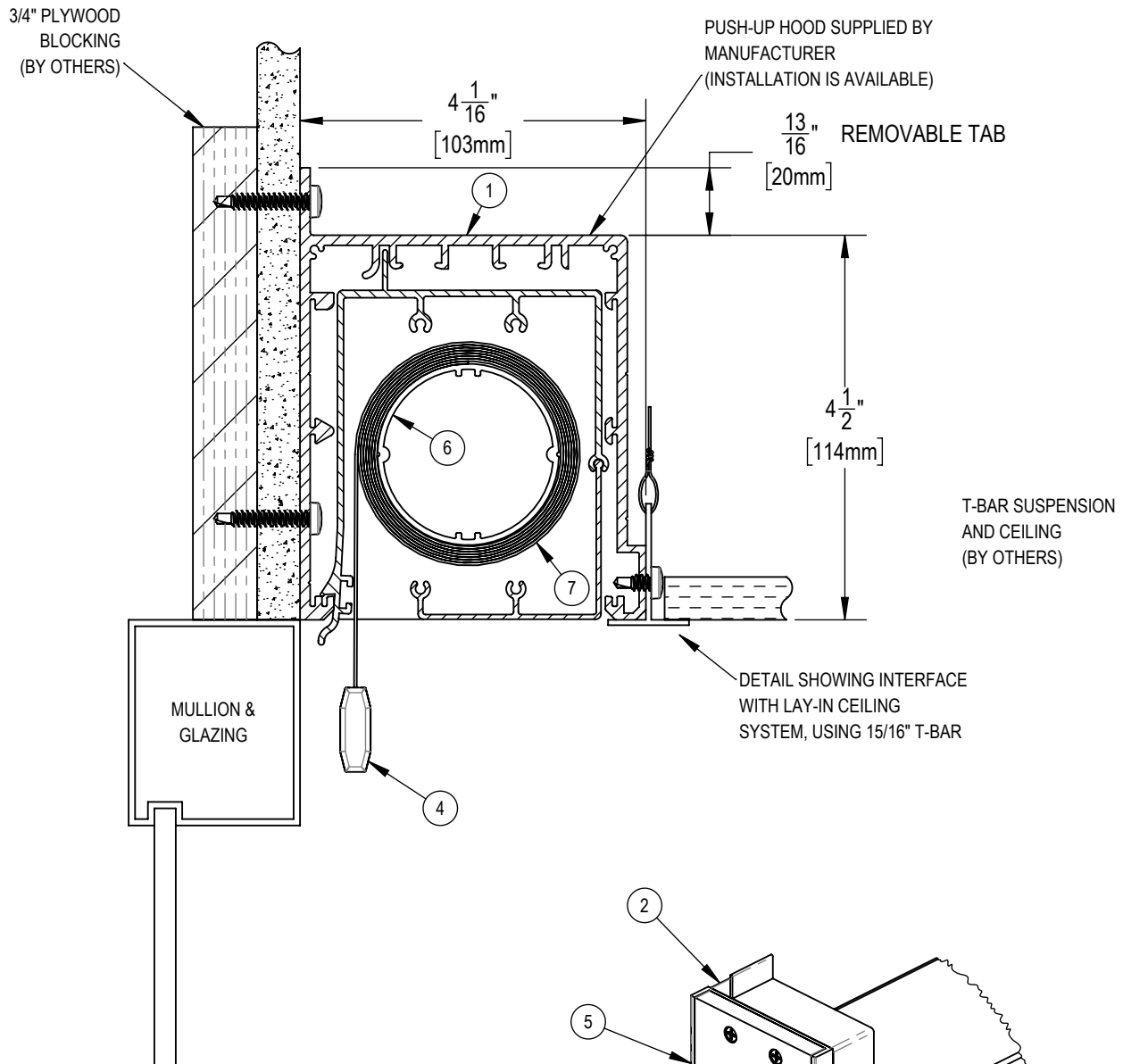
FILE No.

-

DWG. No.

SF-T17M

PUSH-UP HOOD CAN BE ADAPTED
TO ANY CEILING TYPE WHEN
SAMPLE OF CEILING SYSTEM SUPPLIED



NOTES:

1. 3" WIDE EXTRUDED ALUMINUM PUSH-UP HOOD AT EACH END OF SHADE (NOT CONTINUOUS)
2. 1" WIDE PUSH-UP CLIP
3. EXTRUDED ALUMINUM HALF FASCIA
4. EXTRUDED ALUMINUM EXTERIOR HEMBAR
5. ABS END BRACKET (3 1/16" X 3 13/16")
6. 2" Ø EXTRUDED ALUMINUM TUBE
7. FABRIC: 1%, 3%, 5%, 10% OPENNESS OR BLACKOUT

NOTE:
ITEM 1 REMOVED IN THIS VIEW FOR CLARITY

NB.*HOODS REQUIRE SUPPORT GIVEN BY THE T-BAR ATTACHMENT



SOLARFECTIVE

USA Phone: 850-208-3417
Canada Phone: 416-421-3800
E-mail: sfsupport@legrand.us

TELESHADE 4 AUTOMATED VENTED POCKET SYSTEM

PROJECT:

DATE:

MAR 18, 2018

SCALE:

1:2

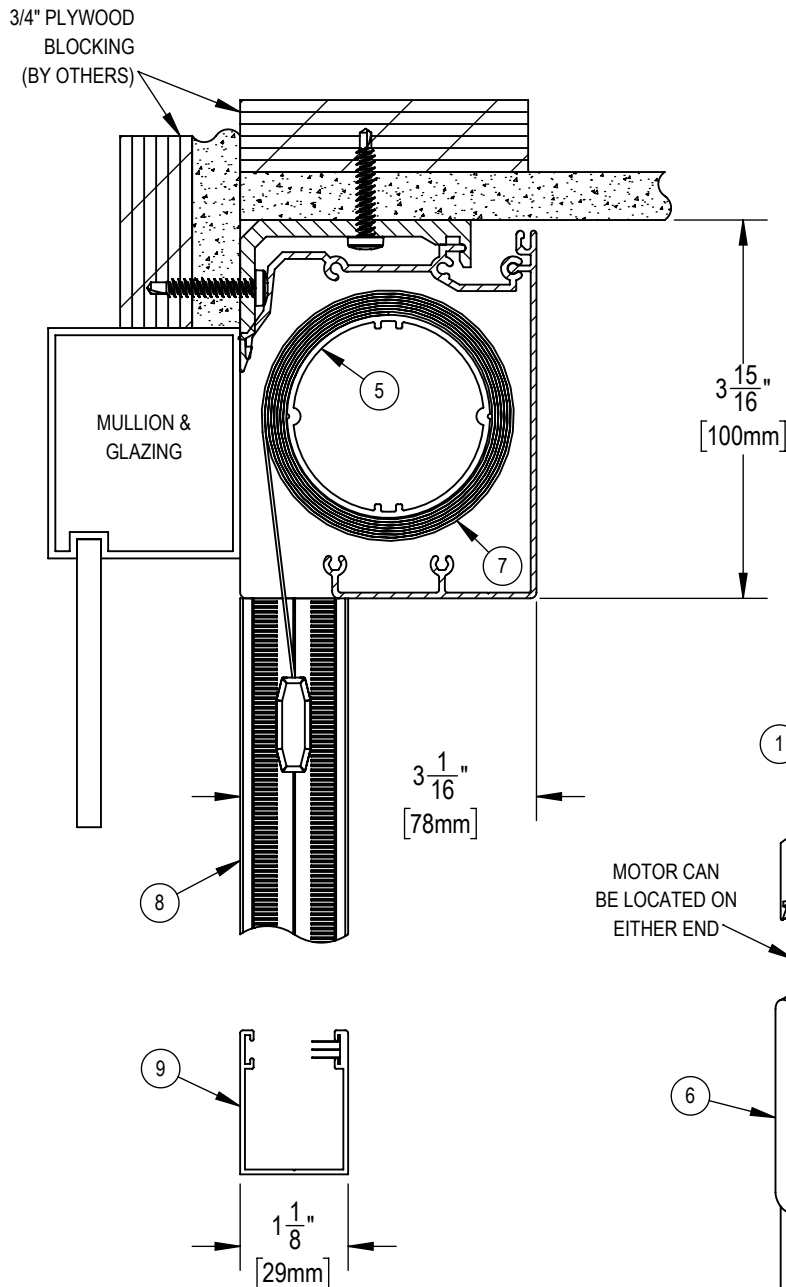
FILE No.

-

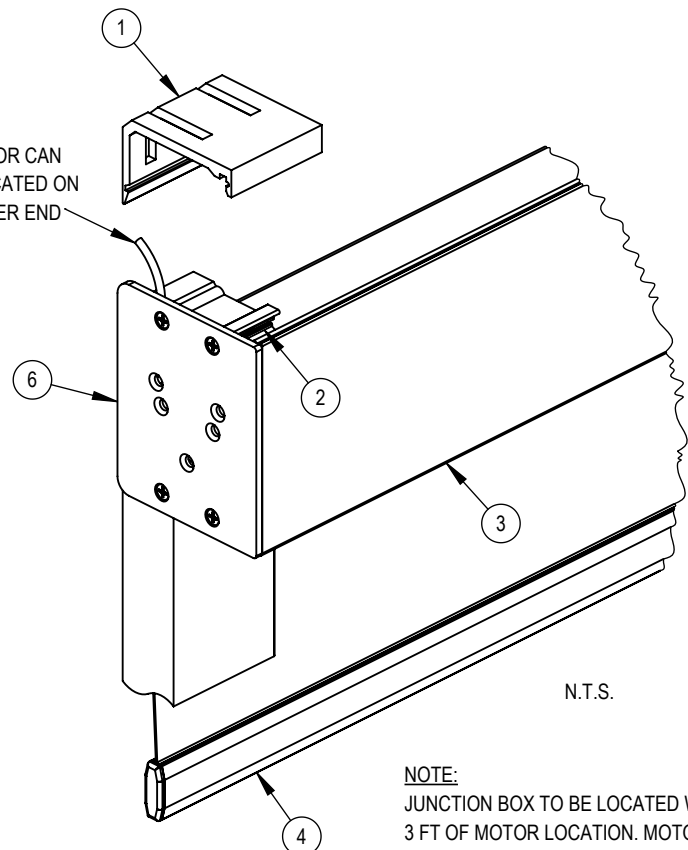
DWG. No.

SF-4BM

THE TELESHADE CAN BE MOUNTED
TO THE CEILING OR TO THE
WALL ABOVE THE MULLION



MOTOR CAN
BE LOCATED ON
EITHER END



N.T.S.

NOTES:

1. MOUNTING ANGLE
2. SPRING CLIP
3. EXTRUDED ALUMINUM FASCIA
4. EXTRUDED ALUMINUM EXTERIOR HEMBAR
5. 2" ϕ EXTRUDED ALUMINUM TUBE
6. ALUMINUM END BRACKETS
7. FABRIC: 1%, 3%, 5%, 10% OPENNESS OR BLACKOUT
8. MOTORIZED BLACKOUT SIDE CHANNELS
9. MOTORIZED BLACKOUT BOTTOM CHANNEL

NOTE:

JUNCTION BOX TO BE LOCATED WITHIN
3 FT OF MOTOR LOCATION. MOTOR
LOCATION TO BE DETERMINED WITH
LEGRAND REPRESENTATIVE.



SOLARFECTIVE

USA Phone: 850-208-3417
Canada Phone: 416-421-3800
E-mail: sfsupport@legrand.us

TELESHADE 4 AUTOMATED CASSETTE SYSTEM WITH SIDE AND BOTTOM CHANNELS

PROJECT:

DATE:

MAR 18, 2018

SCALE:

1:2

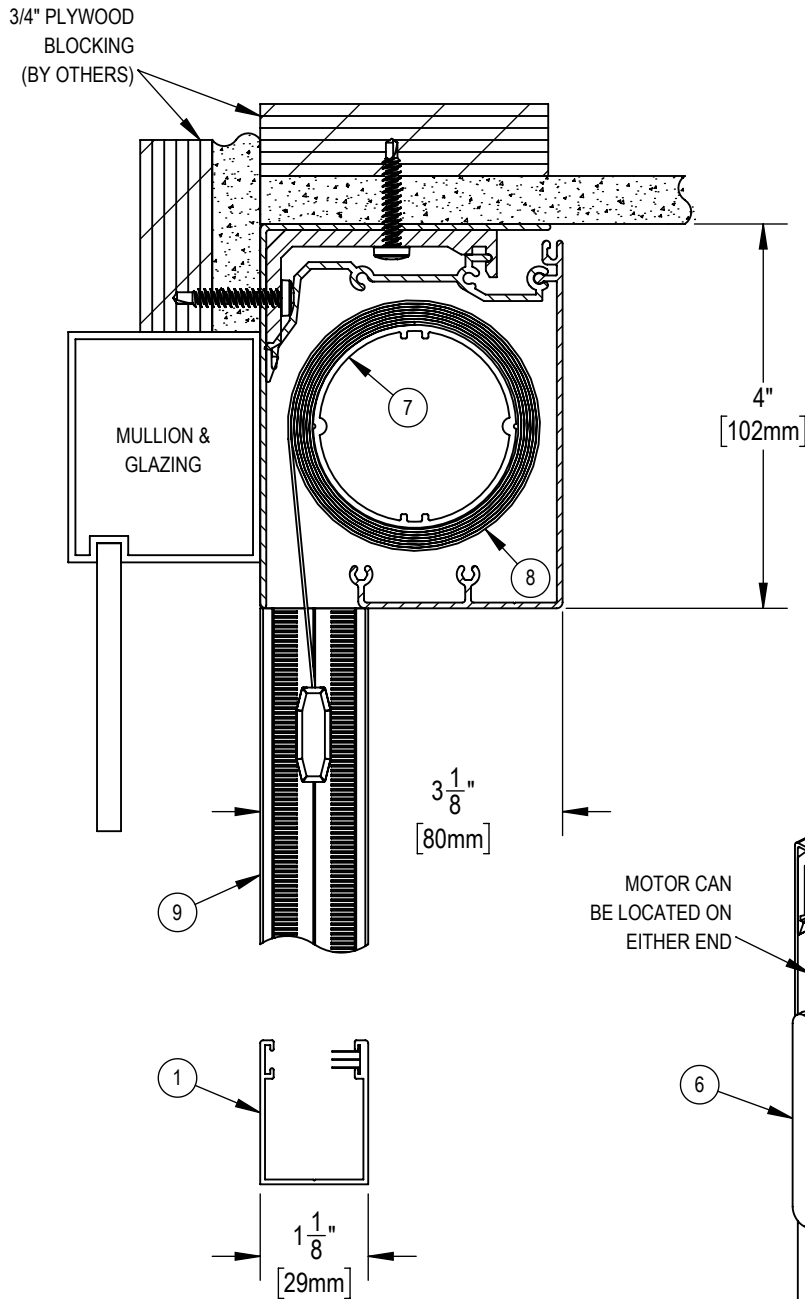
FILE No.

-

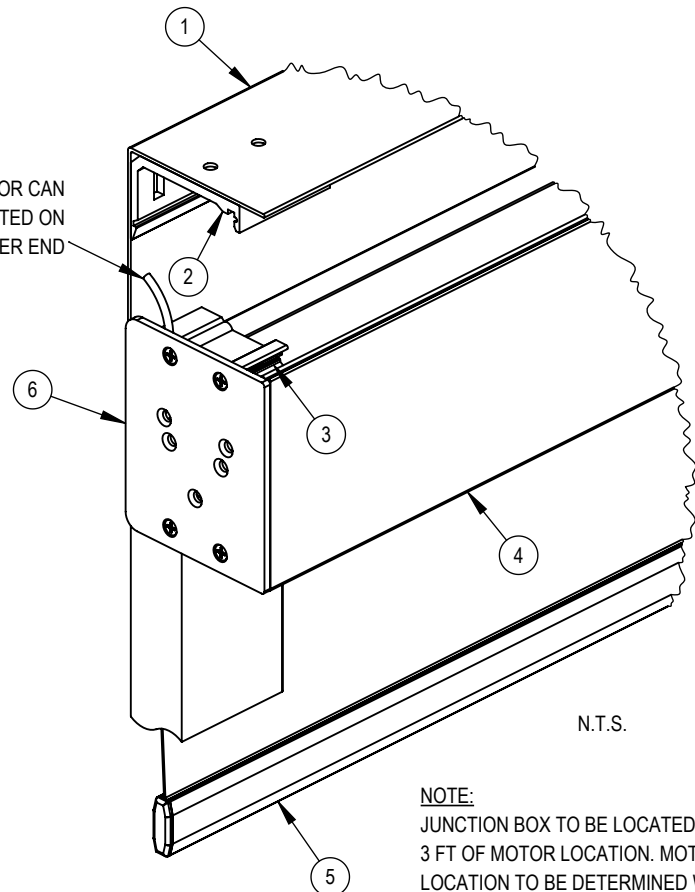
DWG. No.

SF-RD4

THE TELESHADE CAN BE MOUNTED
TO THE CEILING OR TO THE
WALL ABOVE THE MULLION



MOTOR CAN
BE LOCATED ON
EITHER END



N.T.S.

NOTE:
JUNCTION BOX TO BE LOCATED WITHIN
3 FT OF MOTOR LOCATION. MOTOR
LOCATION TO BE DETERMINED WITH
LEGRAND REPRESENTATIVE.

NOTES:

1. EXTRUDED ALUMINUM BACK FASCIA
2. MOUNTING ANGLE
3. SPRING CLIP
4. EXTRUDED ALUMINUM FASCIA
5. EXTRUDED ALUMINUM EXTERIOR HEMBAR
6. ABS END BRACKETS
7. 2" Ø EXTRUDED ALUMINUM TUBE
8. FABRIC: 1%, 3%, 5%, 10% OPENNESS OR BLACKOUT
9. MOTORIZED BLACKOUT SIDE CHANNELS
10. MOTORIZED BLACKOUT BOTTOM CHANNEL



SOLARFECTIVE

USA Phone: 850-208-3417
Canada Phone: 416-421-3800
E-mail: sfsupport@legrand.us

**TELESHADE 4 AUTOMATED CASSETTE SYSTEM
WITH BACK FASCIA, SIDE AND BOTTOM CHANNELS**

PROJECT:

DATE:

MAR 18, 2018

SCALE:

1:2

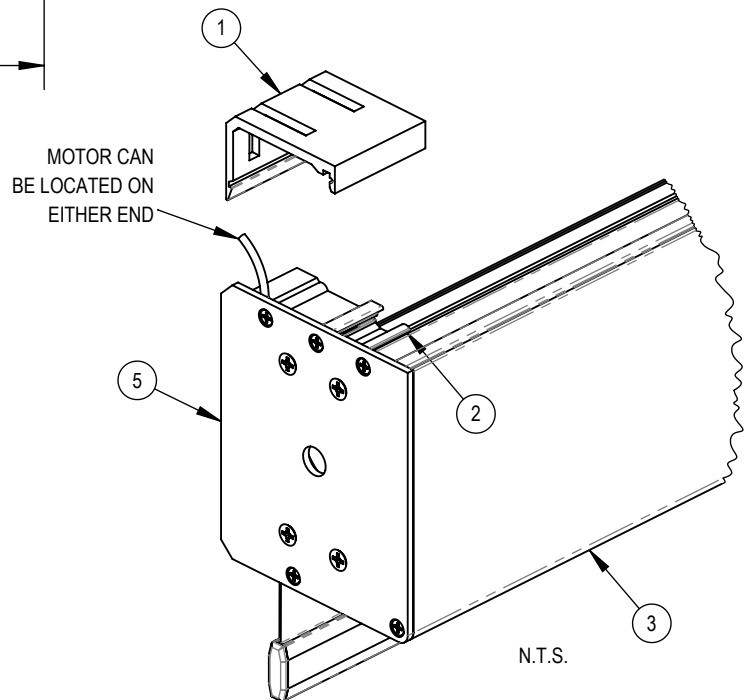
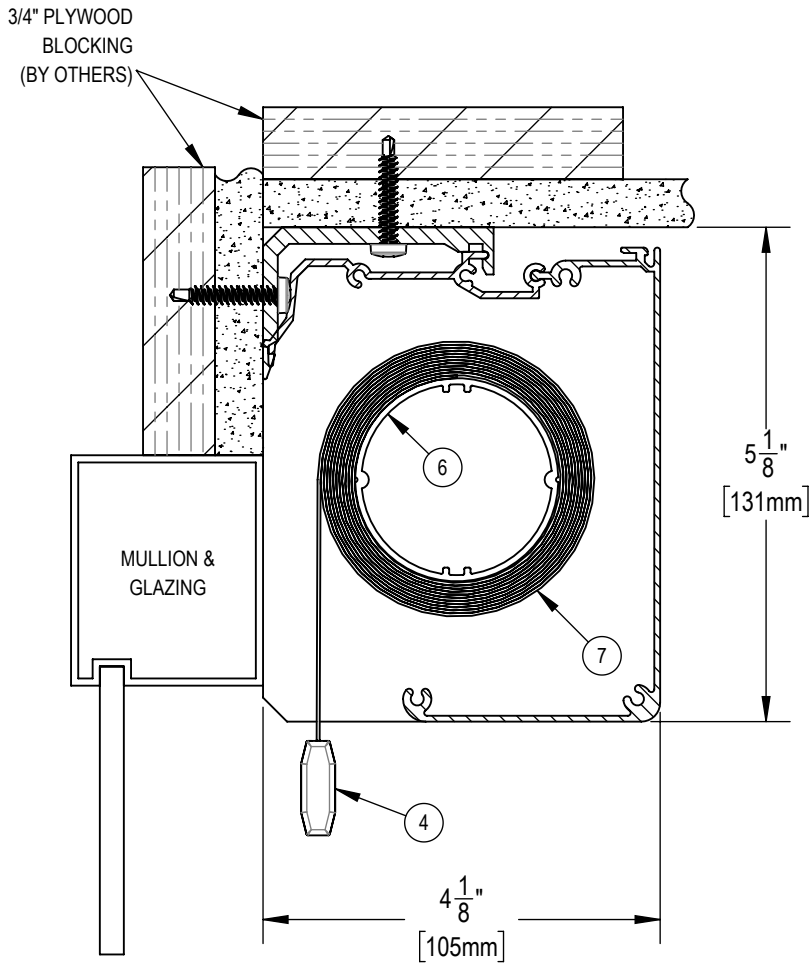
FILE No.

-

DWG. No.

SF-RD5

THE TELESHADE CAN BE MOUNTED
TO THE CEILING OR TO THE
WALL ABOVE THE MULLION



NOTES:

1. MOUNTING ANGLE
2. 2" WIDE SPRING CLIP
3. EXTRUDED ALUMINUM 5" FASCIA
4. EXTRUDED ALUMINUM EXTERIOR HEMBAR
5. ALUMINUM END PLATE
6. 2" ϕ EXTRUDED ALUMINUM TUBE
7. FABRIC: 1%, 3%, 5%, 10% OPENNESS OR BLACKOUT



SOLARFECTIVE

USA Phone: 850-208-3417
Canada Phone: 416-421-3800
E-mail: sfsupport@legrand.us

TELESHADE 5 AUTOMATED CASSETTE SYSTEM

PROJECT:

DATE:

MAR 18, 2018

SCALE:

1:2

FILE No.

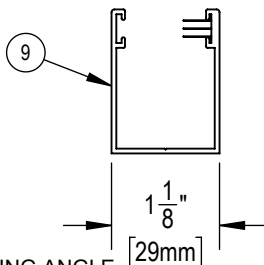
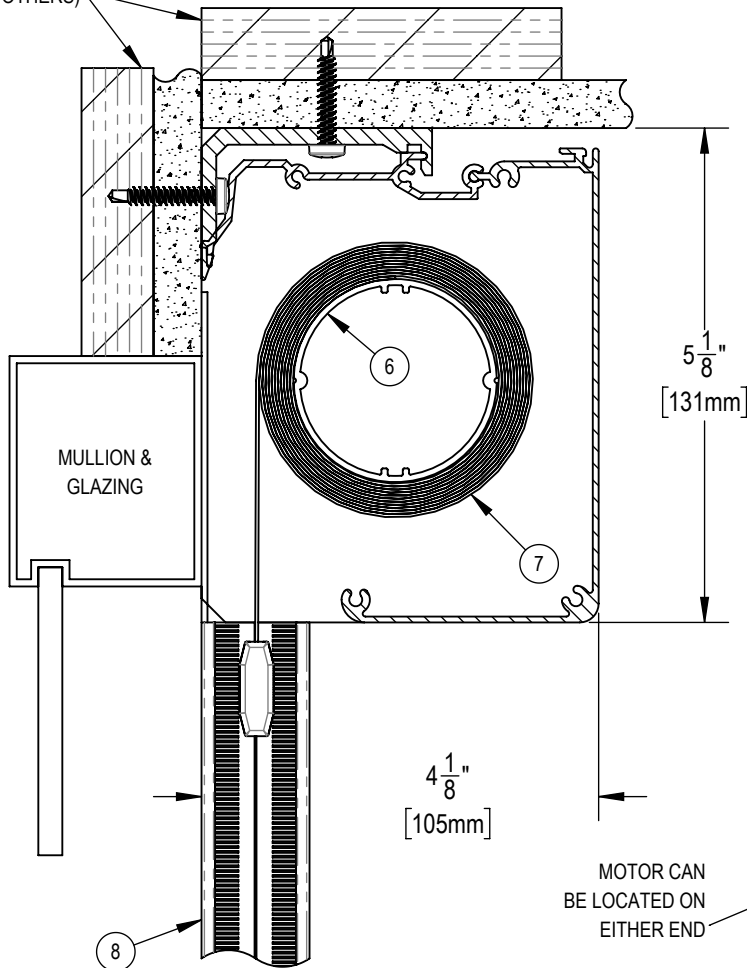
-

DWG. No.

SF-T10M

3/4" PLYWOOD
BLOCKING
(BY OTHERS)

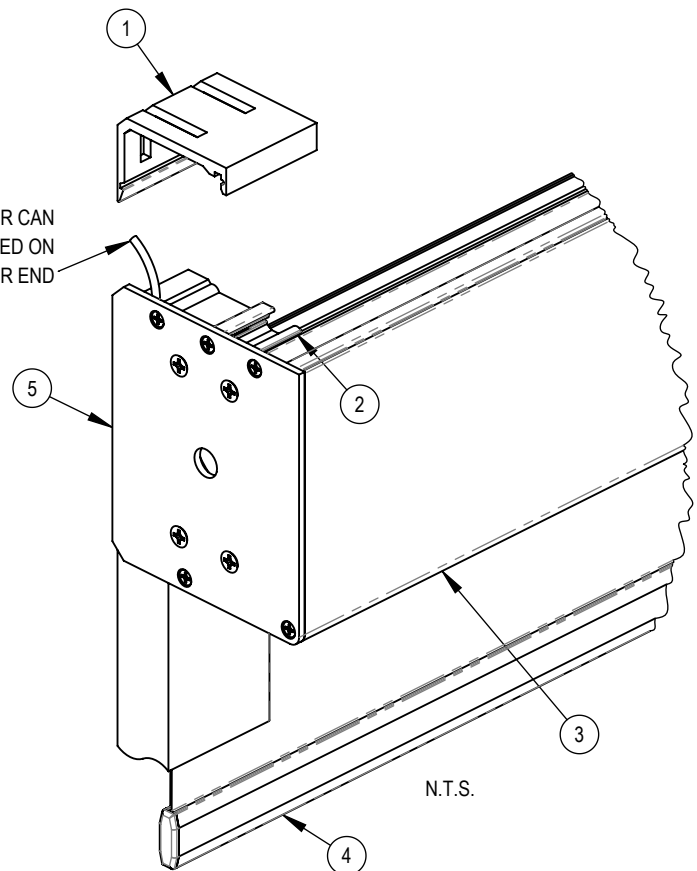
THE TELESHADE CAN BE MOUNTED
TO THE CEILING OR TO THE
WALL ABOVE THE MULLION



NOTES:

1. MOUNTING ANGLE
2. SPRING CLIP
3. EXTRUDED ALUMINUM 5" FASCIA
4. EXTRUDED ALUMINUM EXTERIOR HEMBAR
5. END BRACKETS
6. 2" ϕ EXTRUDED ALUMINUM TUBE
7. FABRIC: 1%, 3%, 5%, 10% OPENNESS OR BLACKOUT
8. MOTORIZED BLACKOUT SIDE CHANNELS
9. MOTORIZED BLACKOUT BOTTOM CHANN

MOTOR CAN
BE LOCATED ON
EITHER END



SOLARFECTIVE

USA Phone: 850-208-3417
Canada Phone: 416-421-3800
E-mail: sfsupport@legrand.us

**TELESHADE 5 AUTOMATED CASSETTE SYSTEM
WITH BACK FASCIA, SIDE AND BOTTOM CHANNELS**

PROJECT:

DATE:

MAR 18, 2018

SCALE:

1:2

FILE No.

-

DWG. No.

SF-RD13M