

WINCONTROL GRAPHICS FOR LI COMPLETE CONTROL

| WCHGR

Graphical enhancement to standard WinControl software

Facility-specific on-screen system graphics

Supports multiple graphics peripherals and file formats



Real time programming and monitoring

Status, documentation, and programming data for each system device

Multiple site graphics on single screen view

Description

An optional package for WinControl Software, WinControl Graphics provides capabilities for on-screen system programming changes, real time monitoring and operation in a graphical environment. It functions with Wattstopper Lighting Integrator Complete Control (LIC) panel systems.

Operation

WinControl Graphics works seamlessly with WinControl. All panel, load, and scheduling data entered in WinControl is automatically shared and available for access from within the WinControl Graphics environment, eliminating duplication of data input. The customized graphic screen displays enable system administrators to instantly identify the status of specific devices, or control the system with ease (e.g., turn individual lamps or relays on or off using a simple mouse click). WinControl Graphics also supports multiple graphic file formats so users can easily import graphics from other applications to customize displays.

Features

- Multiple site graphics on single screen view
- On-screen simulation of system operation
- Point and click control of individual relays or groups of relays
- Displays system activities in context of specific building plans
- Supports BMP, WMF, JPEG, AVI, PCX, DCX graphics file formats
- Zoom, resize, and scroll capabilities for easy maneuverability
- Screens and control buttons may be tailored to individual requirements
- BAA/TAA-compliant models available

Customized Graphical Displays

WinControl Graphics allows users to create and modify graphic displays for customizing the application and to view system lighting status on screen in real time. Typically, a floor or building plan, map, photograph or similar graphic is imported to create a custom control screen so that users may easily identify lighting zones. Customized lighting control buttons are associated with the graphic so that a lighting operation can be turned on or off via a simple mouse click. Users can accommodate multiple graphic displays on a single screen, enabling them to conduct system administration on different sites from a single location.

Applications

For large, complex facilities, such as convention centers, airports, stadiums, or high-rise office buildings, WinControl Graphics offers a versatile, user-friendly system administration tool.

PROJECT

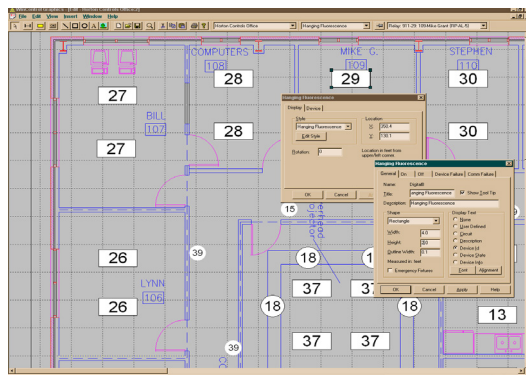
LOCATION/
TYPE

System Requirements

- Compatible with Windows Vista Business and XP Professional
- PC Requirements: 512 MB RAM plus 1.0 MB per graphic screen, CD-ROM, 100 MB free hard disk space plus 1.0MB per graphic screen
- Monitor Requirements: 16-bit color, minimum 800x600 resolution
- Data Communications Link (HLINKCC) required to connect PC to LIC panel network

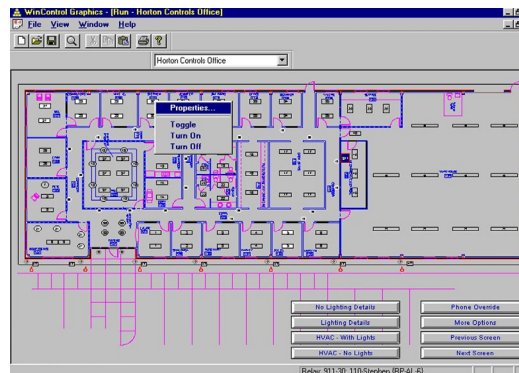
Sample WinControl Graphics Screens

WinControl Graphics System Screen



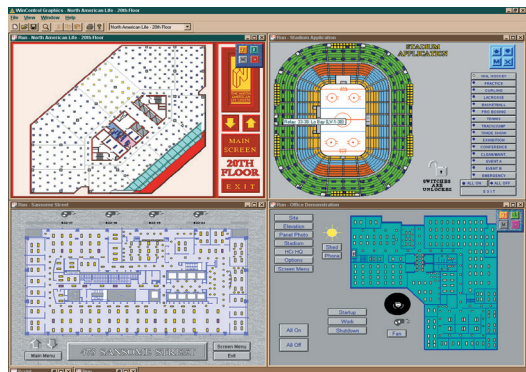
Graphic screens accurately display fixtures, switches, and other system devices and their on/off status.

WinControl Graphics Run Mode



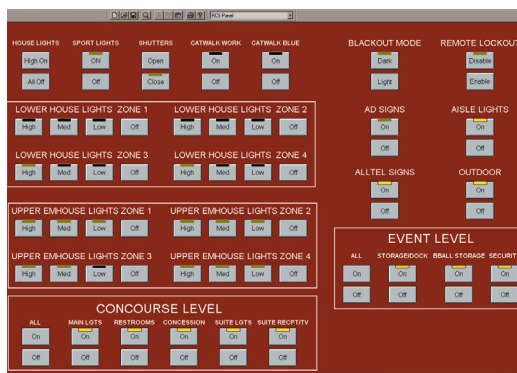
The run mode enables users to see programming changes on-screen and in real time.

Multiple Site Viewing on Single Screen



Multiple site graphics are accessible on a single screen.

Customized Graphical Displays



Users can customize graphic displays to streamline system administration.

Ordering Information

Catalog #	Description
<input type="checkbox"/> WCHGR250	WinControl Graphic Software for Lighting Integrator Complete Control 250-relay system
<input type="checkbox"/> WCHGR500	WinControl Graphic Software for Lighting Integrator Complete Control 500-relay system
<input type="checkbox"/> WCHGR750	WinControl Graphic Software for Lighting Integrator Complete Control 750-relay system
<input type="checkbox"/> WCHGRUL	WinControl Graphic Software for Lighting Integrator Complete Control unlimited-relay system
Required software package:	
<input type="checkbox"/> WCHSTD	WinControl Software for Lighting Integrator Complete Control
Additional networking component:	
<input type="checkbox"/> HLINKCC	Lighting Integrator Data Communications Link (required for PC connection to LI data line)