

WINCONTROL SOFTWARE FOR LIC COMPLETE CONTROL

| WCHSTD

Windows-based control and automation for Lighting Integrator Complete Control panels

Panel programming off- or online

Detailed activity logs, runtime reports, and graphs



System management and administration

Design, layout and document lighting control projects

Simulator function for training purposes

Description

WinControl Software provides PC-based automation and control for Wattstopper Lighting Integrator Complete Control (LIC and LICA) panel systems. The integral design program, WinControl Designer, can layout and document lighting control projects, and produce CAD-ready diagrams in DXF format.

Operation

WinControl provides a user interface for programming, monitoring and controlling functions for LIC panel networks. Administrators can use the software to program control schedules off-line, and then execute updates with a simple command. Once programmed using WinControl, the panels execute control scenarios, including scheduled off with blink warning, time delay overrides with blink warning, or automatic daylight switching with occupant interlock/override. Administrators can configure password-protected security settings to specify users with authority to change programming or documentation, and execute control functions. Online operation enables users to control individual relays or make immediate changes to scheduled operations.

Features

- Explorer-like view of all system components
- Remote operation capabilities via modem network or TCP/IP connection via WebLink
- Design export to DXF format with output, including single line riser diagram, panel schedules and specification summary
- Weekly scheduling with holiday and astronomic control
- Designer wizard creates lighting control project layouts
- User-programmable override and time delays
- Full support for AS-100 Automatic Control Switches
- Program panels for HPSA Analog Photocell operation with up to 32 setpoints
- Configure panels for varied occupancy sensor behavior to check occupied and unoccupied periods
- BAA/TAA-compliant models available

System Reports and Analysis

WinControl provides comprehensive monitoring and reporting capabilities, including reports for documenting control system devices and schedules. It generates activity logs, exception reports and run-time graphs that can be used for trend analysis or to track actual lighting usage (down to the individual relay level, if desired) and evaluate energy costs. The software can also verify that the system is operating as intended, or identify and diagnose potential concerns.

Applications

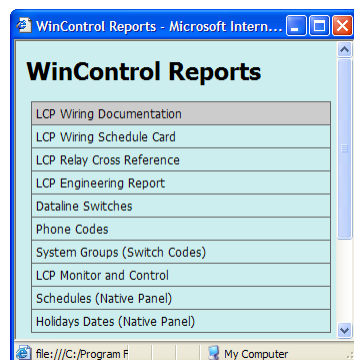
Facilities with multiple LIC panels, such as office building campuses, convention centers, airports, arenas and large commercial facilities are ideal settings for lighting control management via WinControl. Capable of automating and controlling all types of interior and exterior lighting applications, WinControl is also adept at administration down to the relay level. Operators can tailor lighting control to building and occupant activities on a daily or weekly basis with programmable holiday and exception schedules.

PROJECT		LOCATION/ TYPE	
---------	--	-------------------	--

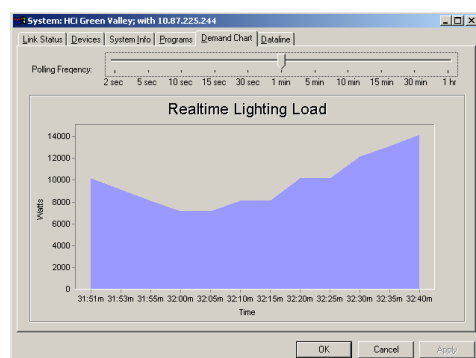
Specifications

- Compatible with Windows Vista Business and XP Professional
- PC Requirements: 256 MB RAM, CD-ROM, 100 MB free hard disk space
- Monitor Requirements: 16-bit color, minimum 800x600 resolution
- Data Communications Link (HLINKCC) required to connect PC to LIC panel network

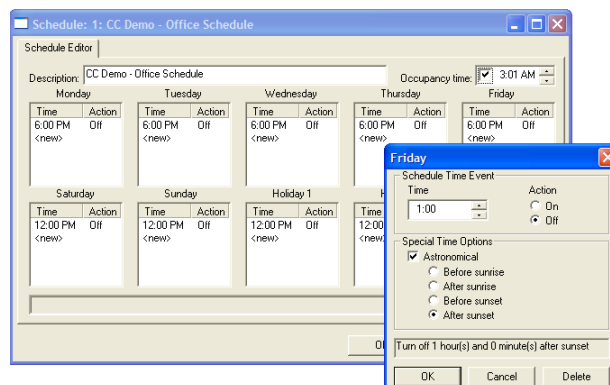
Sample WinControl Screens and Reports



Users can select reports from a browser-like screen.



Real time load report graph provides administrator with a snapshot of lighting system usage.



Users set up weekly schedules, modify daily events, and specify actions for weekends and holidays on this scheduling screen.

Date	Group Runtime	Runtime/Device	Std. Dev.
Tue 6/13/2000	101:34	8:28	2.39
Device		Runtime	
Relay: 911-S:132-Jim Williams (RP-AL-2)		11:16	
Fri 6/16/2000	111:20	9:16	0.66
Device		Runtime	
Relay: 911-B:105-Pete Horton (RP-AL-2)		11:08	
Relay: 911-T:107-Bill Horton (RP-AL-4)		10:23	

Monitoring and trend analysis are enabled by reports such as these runtime and runtime exception reports.

Type	Circuit	Description	LV Switch	Comment	Circuit Load	Normal Schedule	Override Duration	Variable Override	Blink Warn	Pulse	HID Load	Log Tracks	Common	Relay Number
1 Pilot	HB-2-1	Office 201	201		90	0001 - CC Dr	00:10	<None>	No	No	No	No	No	1
2 Pilot	HB-2-1	Office 202	202		90	0001 - CC Dr	00:10	<None>	No	No	No	No	No	2
3 Pilot	HB-2-2	Open Office East 2			225	0001 - CC Dr	00:00	<None>	No	No	No	No	No	3
4 Pilot	HB-2-2	Open Office East 1			450	0001 - CC Dr	00:00	<None>	No	No	No	No	No	4
5 Pilot	HB-2-3	Open Office West 2			315	0001 - CC Dr	00:00	<None>	No	No	No	No	No	5
6 Pilot	HB-2-3	Open Office West 1			630	0001 - CC Dr	00:00	<None>	No	No	No	No	No	6
7 Pilot	HB-2-4	Corridor / Lobby	203		495	<None>	00:03	<None>	No	No	No	No	Yes	7
8 Pilot	HB-2-5	Conference Room B	204		210	<None>	00:00	<None>	No	No	No	No	No	8
9 Pilot	HB-2-5	Conference Room A	205		135	<None>	00:00	<None>	No	No	No	No	No	9
10 Pilot	HB-2-6	Mens Restroom, Fa			140	<None>	00:00	<None>	No	No	No	No	No	10
11 Pilot	HB-2-6	Womens Restroom			140	<None>	00:00	<None>	No	No	No	No	No	11

Documenting, programming and controlling panel relays is simplified with point and click screens and drop down menus.

Ordering Information

Catalog #	Description
<input type="checkbox"/> WCHSTD250	WinControl Software for Lighting Integrator Complete Control 250-relay system
<input type="checkbox"/> WCHSTD500	WinControl Software for Lighting Integrator Complete Control 500-relay system
<input type="checkbox"/> WCHSTD750	WinControl Software for Lighting Integrator Complete Control 750-relay system
<input type="checkbox"/> WCHSTDUL	WinControl Software for Lighting Integrator Complete Control unlimited-relay system
Additional networking component:	
<input type="checkbox"/> HLINKCC	Lighting Integrator Data Communications Link (required for PC connection to LI dataline)