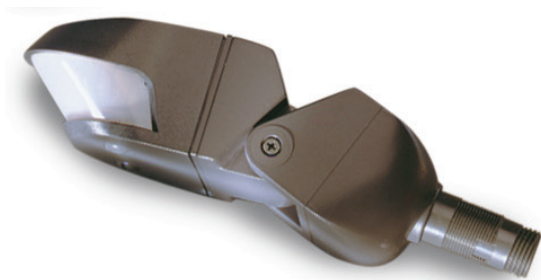


# EW LINE VOLTAGE OUTDOOR MOTION SENSOR

| EW-200



## Product Overview

The EW-200 outdoor motion sensors provide motion based control of outdoor lighting. Raintight and rated for -40°F to 130°F, EW sensors perform reliably in all weather conditions.

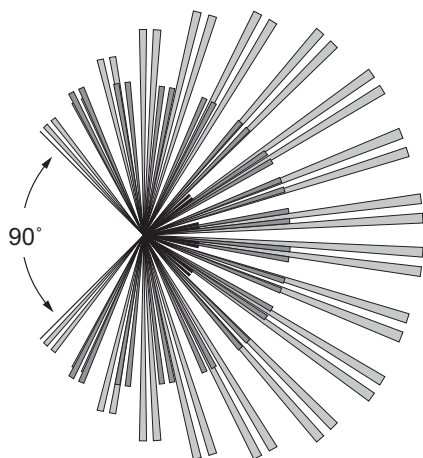
The EW sensors operate at line voltage and can be mounted onto a standard, outdoor junction box.

For situations when a complete outdoor sensor package is desired, the EWF models include durable, polycarbonate lamp holders that accept PAR 20 or 38 lamps. They

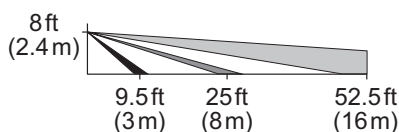
are UV and impact resistant and are impervious to weathering. The EWF features a unique dual-adjustment aiming system that allows the lamps to be angled and locked into position without the use of tools. The lamp holders' unique silicon seals allow them to be aimed above horizontal in damp or wet areas.

Applications for commercial settings include walkways, parking lots, dock lighting and warehouses. Typical uses outside a home include garages, backyards, entrance ways and porches.

**Figure 1. PIR Coverage:**  
Overhead view



**Figure 2. PIR Coverage:**  
Side view



## Models

EW-200-120  
EW-200-277

## Specifications and Features

Operating Voltage: 120 VAC or 277 VAC

Sensor dimensions: 6.7" x 3.2" x 2.2"  
(170mm x 80mm x 55mm)

PIR coverage: 270°

Adjustable light level: 0.5 to 200  
footcandles (5.4 to 2,152.8 lux)

Designed for indoor and outdoor use

Operating conditions: -40° to 130°F  
(-40° to 54°C); 5% to 95% RH,  
non condensing

1/2" threaded nipple fits standard  
NEMA weather proof fixture fitting

Power consumption:

EW-200-120: 2.0W

EW-200-277: 4.0W

Patented Voltage Drop Protection

Adjustable Hold-off feature for control  
based on available daylight

Isolated relay with N/O and N/C  
outputs; rated for 1 Amp @ 30  
VDC/VAC (EW-200)

Front rotates for easy coverage  
adjustment

Compatible with all electronic ballasts  
and PL lamp ballast systems

Lamp holders use PAR 20 or 38 lamps,  
up to 150W each lamp\*

User-adjustable time delay from  
12 seconds to 16 minutes

Optional override-ON to turn lights on  
remotely for the length of the  
time delay

Weight: 1 lbs (453.6 g)

UL and cUL listed (UL 773A rated  
raintight and UL 1571 rated for wet  
locations)

Five year warranty

## Materials

Polycarbonate, flame retardant,  
UV resistant

## Factory Defaults

Time Delay: 12 seconds

Light Level: 200 footcandles

## Installation and wiring instructions

1. Determine an appropriate mounting location for the EW sensor.
2. Connect wires to load as shown in figure 6.
3. Connect wires to electrical supply as shown in figure 6.
4. Attach the mounting post to the cover plate.
5. Attach the cover plate assembly and gasket to the junction box with 4 screws and screw covers.

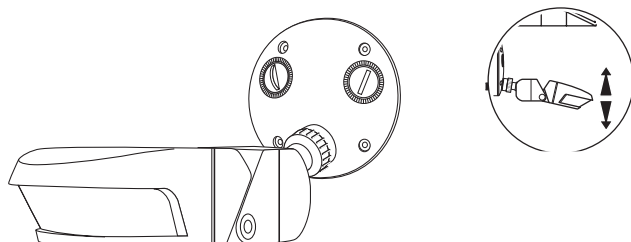


Figure 3. EW sensor mounting and positioning

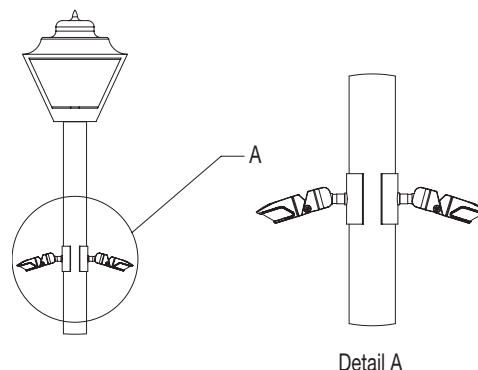


Figure 4. Pole mounting

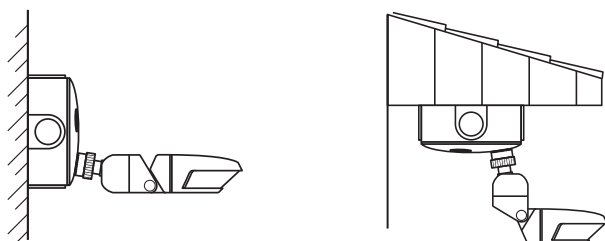


Figure 5. Wall mounting

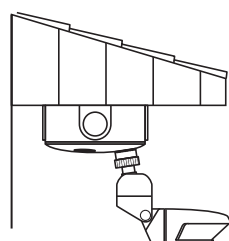


Figure 6. Ceiling/eave mounting

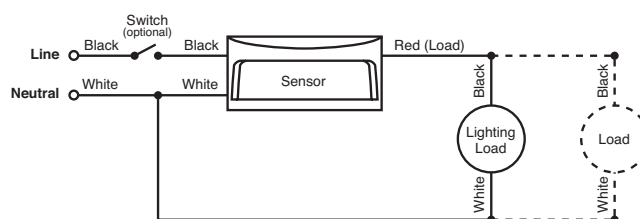


Figure 7. EW sensor wiring diagram

## Sequence of Operation

Utilizing advanced PIR technology, the sensors detect the difference between infrared energy in motion and the background space to turn lighting on when a person or vehicle enters the coverage area. After the area is vacated and the time delay elapses, lighting automatically turns off. The EW's dual PIR detectors and three level lens increase the detection density as well as the accuracy of motion detection. The EW also supports ON/OFF control based on daylight levels via an adjustable light level setting.

## Ordering Information

Catalog #	Master Pack Details					Inner Pack Details				
	Master Pack Quantity	Case dimensions (inches)			Weight (pounds)	Inner Pack Quantity	Case dimensions (inches)			Weight (pounds)
		Length	Width	Height			Length	Width	Height	
EW-200-120-W	10	16.33	12.0	9.64	11.39	N/A	N/A	N/A	N/A	N/A
EW-200-120-G	10	16.33	12.0	9.64	11.39	N/A	N/A	N/A	N/A	N/A
EW-200-277-W	10	16.33	12.0	9.64	11.39	N/A	N/A	N/A	N/A	N/A
EW-200-277-G	10	16.33	12.0	9.64	11.39	N/A	N/A	N/A	N/A	N/A

Catalog #	Color	Description	Load Rating	Voltage
<input type="checkbox"/> EW-200-120-W	Arctic white	EW line voltage outdoor motion sensor	0-1000 watt ballast, tungsten	120 VAC; 60 Hz
<input type="checkbox"/> EW-200-120-G	Architectural gray	EW line voltage outdoor motion sensor	0-1000 watt ballast, tungsten	120 VAC; 60 Hz
<input type="checkbox"/> EW-200-277-W	Arctic white	EW line voltage outdoor motion sensor	0-1000 watt ballast	277 VAC; 60 Hz
<input type="checkbox"/> EW-200-277-G	Architectural gray	EW line voltage outdoor motion sensor	0-1000 watt ballast	277 VAC; 60 Hz

Information supplied above is subject to change. Harmonization code: 8538908080. Country of origin: China.