

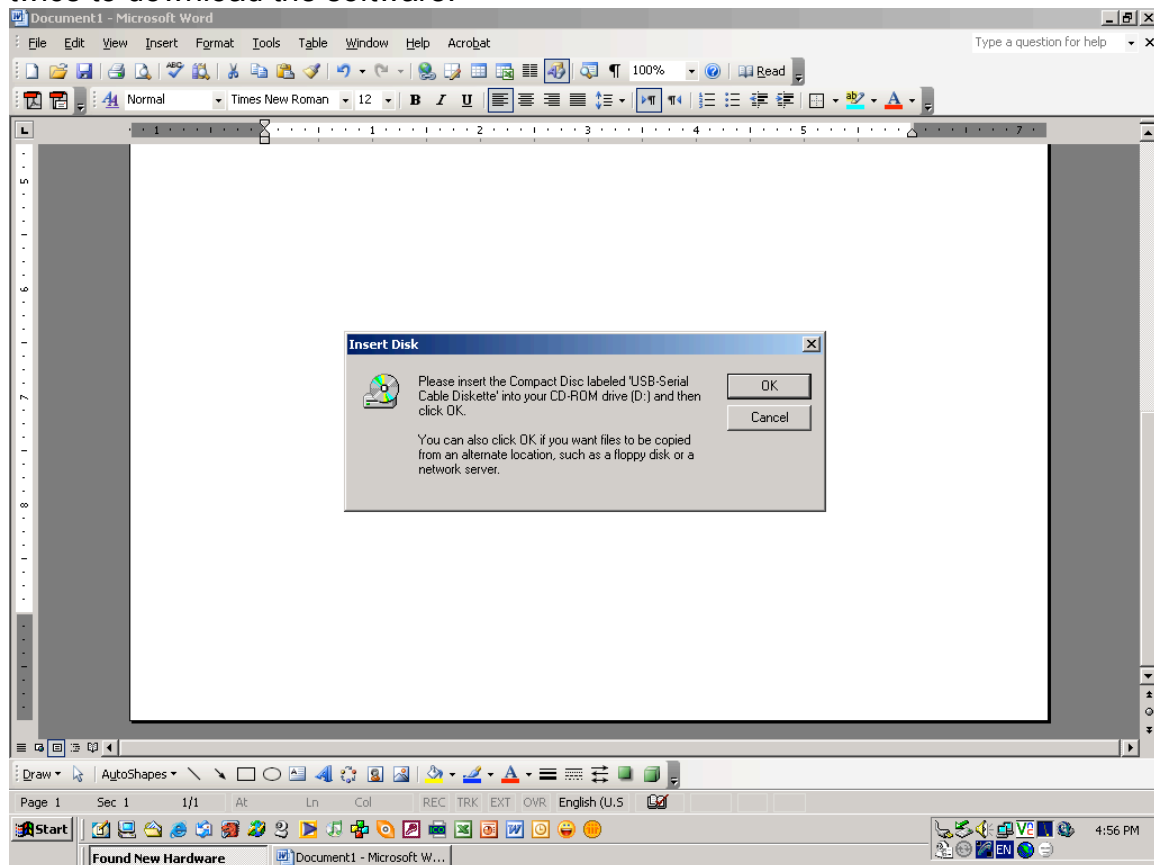
Serial to USB Converter for ITProSoft

Newer computers may not have a serial port. This necessitates the need to use a Serial to USB converter. Version 2.2.130 of the ITProSoft supports to the use of these devices. For your convenience a Serial to USB converter is included in newer version of the IT-200. If you have an older IT-200 a converter can be purchased from Watt Stopper Customer Service at 800-879-8585. Note; Some brands of Serial to USB converter to not operate correctly with ITProSoft. For best results use the converter provided by Watt Stopper.

Use of the Serial to USB Adaptor

Connect the male end of the DB9 serial cable, that came with your IT-200, to the IT-200, and the other end the USB converter. Then attach the USB converter to your computer by connecting the USB cable into any built-in USB port on your computer.

After connecting the USB converter to your computer will be a asked to for search for and install new software. Place the USB driver CD into your CD-ROM, then select "YES" in the menu box. To proceed, click the "Next" button twice to download the software.



Once the software is loaded you will need to locate the IT-200 assigned COM port . To do this, initiate the ITProSoft program and select "EDIT" from the menu bar and then select OPTION. In the OPTION menu box select COM PORT then Search. The COM port for the IT-200 will be assigned.

The IT-200 data logger is now ready for use.

Note: The serial cable provided with the IT-200 must be used with the Serial to USB converter to connect the logger. The logger cannot be connected directly to the Serial to USB adaptor.