

LMCT v2 Firmware Updating

Using the DfuSe Demo software, the appropriate firmware, and a micro-usb cable, a user can update the firmware in the v2 (HW-6) LMCT -100.

The DfuSe utility is version 3.0.2 and is attached to this document along with the current firmware and a copy of these instructions.

NOTE: Be sure your micro USB cable has the data pair in it and is not simply a charging cable. If the update process is followed and the app does not display choices in the "Available DFU Devices" drop-down, the cable is the likely cause.

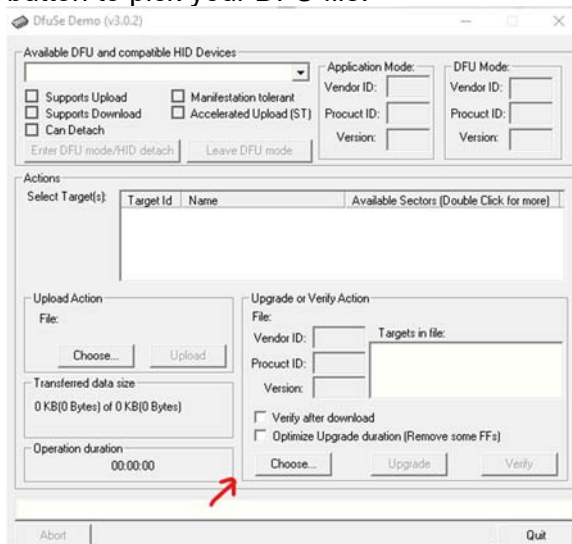
1. Install the DfuSe Software application.

2. Prep the LMCT

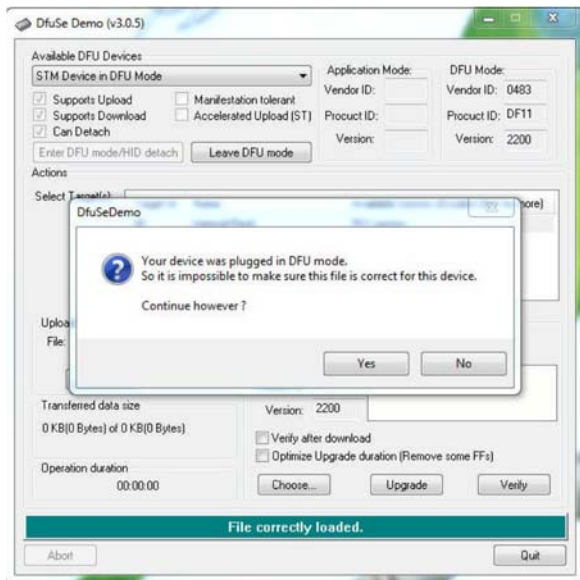
- To program the LMCT, you must start with batteries removed from the unit.
- Install the batteries. Don't press the power button yet.
- Attach one end of a micro USB cable to the LMCT and the other end of the cable to your PC.

3. Launch the DfuSe application

- Press the POWER button on the LMCT.
- Under "Available DFU Devices" pull-down, select "STM Device in DFU Mode".
- In the "Upgrade or Verify Action" box on the lower right-hand side, use the "Choose" button to pick your DFU file.



- After choosing the correct file, press the "Upgrade" button to upload the file to the device. If a message pops up saying, "Your device was plugged in DFU mode" as shown below, click yes and continue.



e. After the file is uploaded, you will see a message display "Upgrade successful!"

