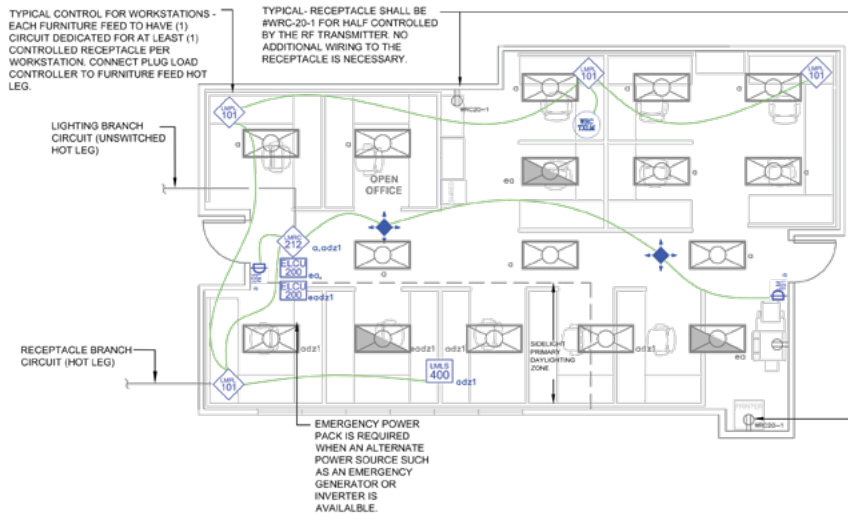


## ASHRAE 90.1 (2010) Compliant Dimming with DLM product



### SEQUENCE OF OPERATION

1. General lighting (a, adz1) auto On to 50% and controlled receptacles auto On when occupancy detected.
2. Space manual control On/Off/Dim lighting (a, adz1) with dimmer switches.
3. Lighting in primary (adz1) daylight area will continuously dim based on daylight contribution to maintain at least 35FC at task level.
4. Auto off all lighting and controlled receptacles within 30 minutes of occupants leaving.
5. Emergency lighting transfers to emergency power source and full On with loss of normal power.

### DESIGN CONSIDERATIONS

- Receptacle control can be designed using either an RF transmitter with receptacle RF receivers, or can be hardwired to receptacles using an LMPL-101 Plug Load Room Controller.
- Time scheduling, demand response and remote programming/diagnostic functions are enabled with installation of the LMBC-300 Network Bridge for system connectivity.
- To integrate occupancy detection control with the HVAC System, use a LMRL-100 Isolated Relay Interface.

### BILL OF MATERIALS

LMRC-212 (1)	2-Relay Room Controller, 0-10V Dimming
LMDC-100 (2)	Ceiling Mount Dual Tech Occupancy Sensor
LMDM-101 (2)	1-Button Dimming Wall Switch
LMLS-400 (1)	Photosensor, Closed Loop
LMPL-101 (4)	Plug Load Room Controller
WRC-TX-LM (1)	Plug Load RF Transmitter
WRC-20-1 (2)	Plug Load Half Controlled Receptacle
ELCU-200 (2)	UL924 Emergency Control Unit
LMRJ	Pre-Terminated Cable

### CODE REQUIREMENTS

9.4.1	Manual On / Partial Auto On
9.4.1.1	Auto Shut Off
9.4.1.2	Space Control
9.4.1.2(a)	Bi-level Control
9.4.1.4	Auto Daylighting Control
8.4.2	Auto Receptacle Control