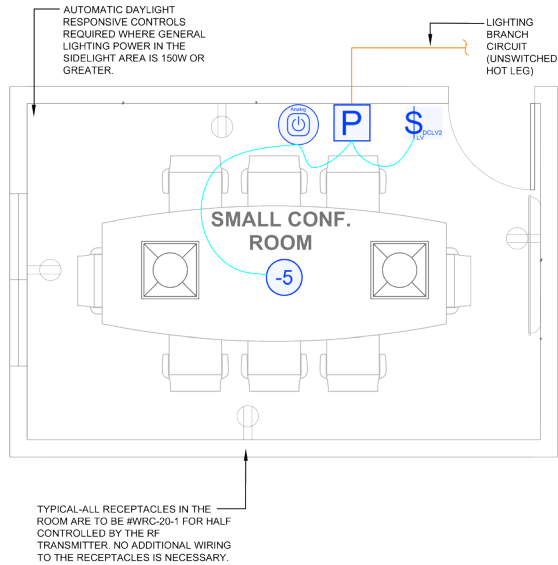


### ASHRAE 90.1 (2013) Compliant Dimming with Analog Product



#### SEQUENCE OF OPERATION

1. Lighting auto On to 50% illumination and controlled receptacles auto On when occupancy detected.
2. Manual On/Off/Dim control of lighting with wall switch.
3. Auto off all lighting and controlled receptacles within 20 minutes of occupants leaving.

#### DESIGN CONSIDERATIONS

- When lighting power in the primary sidelight area is 150 W or greater, it must have automatic daylight responsive controls installed for all general lighting in that area.
- If detection coverage is sufficient, a wall box occupancy sensor, such as a DW-311 or PW-311 may be used and also provide dimming control.
- Receptacle control can be designed using either an RF transmitter with receptacle RF receivers, or can be hardwired to receptacles using a receptacle rated Power Pack.
- Time scheduling, demand response and remote programming/ diagnostic functions are available using Wattstopper Digital Lighting Management networked products.
- To integrate occupancy detection control with the HVAC system, use a CI-300 occupancy sensor with isolated relay.

#### BILL OF MATERIALS

BZ-150 (1)	Power Pack
CI-305 (1)	Ceiling Mount PIR Occupancy Sensor
DCLV2 (1)	Low Voltage, 0-10V Dimming Wall Switch
WRC-TX (1)	Plug Load RF Transmitter
WRC-20-1 (4)	Plug Load Half Controlled Receptacle

#### CODE REQUIREMENTS

9.4.1.1(a)	Local Control Device
9.4.1.1(b, c)	Manual On / Partial Auto On
9.4.1.1(d)	Bi-level Control
9.4.1.1(h)	Auto Full Off
8.4.2	Auto Receptacle Control