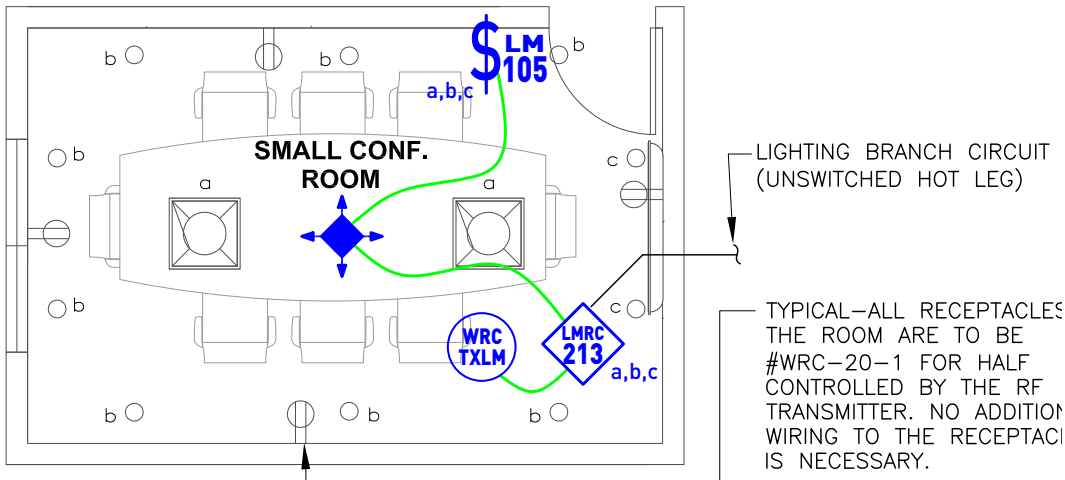


**ASHRAE 90.1 (2013) Compliant** Dimming with DLM product



## SEQUENCE OF OPERATION

- General lighting (a) auto On to 50% and controlled receptacles auto On when occupancy detected.
- Manual On/Off/Dim of general lighting (a) and down lighting (b, c) with scene switch.
- Scene settings
 

a. General Lighting	(a) 100%	(b) 0%	(c) 0%
b. Presentation	(a) 75%	(b) 50%	(c) 100%
c. Video	(a) 20%	(b) 75%	(c) 0%
d. All Off	(a) 0%	(b) 0%	(c) 0%
- Auto off all lighting and controlled receptacles within 20 minutes of occupants leaving.

## BILL OF MATERIALS

LMRC-213 (1)	3-Relay Room Controller, 0-10V Dimming
LMDC-100 (1)	Ceiling Mount Dual Tech Occupancy Sensor
LMSW-105 (1)	5-Button Scene Switch
WRC-TX-LM (1)	Plug Load RF Transmitter
WRC-20-1	Plug Load Half Controlled Receptacle

## DESIGN CONSIDERATIONS

- Receptacle control can be designed using either an RF transmitter with receptacle RF receivers, or can be hardwired to receptacles using an LMPL-101 plug load room controller.
- Time scheduling, demand response and remote programming/diagnostic functions are enabled with installation of the LMBC-300 Network Bridge for system connectivity.
- To integrate occupancy detection control with the HVAC System, use a LMRL-100 Isolated Relay Interface.

## CODE REQUIREMENTS

9.4.1.1(a)	Local Control Device
9.4.1.1(b, c)	Manual On / Partial Auto On
9.4.1.1(d)	Bi-level Control
9.4.1.1(h)	Auto Full Off
8.4.2	Auto Receptacle Control